



## Pelham Road, Southsea, PO5 3DG

### Asking Price £230,000

This spacious, light, luxury three bedroom, split level apartment on Pelham Road, Southsea is not to be missed.

This stunning apartment has been curated to a very high standard throughout and is conveniently located close to shops, bars, cafes, restaurants and the seafront! Bus routes are also on your doorstep.

Set over two floors, this apartment offers space, light and an abundance of unique personality, including a spiral staircase.

Although currently tenanted, this property is being sold CHAIN FREE and with a GARAGE, making this a great opportunity to own a luxury property in the heart of vibrant Southsea.

#### Disclaimer

All dimensions are approximate and are quoted for guidance only, their accuracy cannot be confirmed. Reference to appliances and / or services does not imply they are necessarily in working order or fit for the purpose. Buyers are advised to obtain verification from their Solicitors as to the freehold / Leasehold status of the property, the position regarding any fixtures and fittings and where the property has been extended / converted as to Planning Approval and Building Regulations compliance. These particulars do not constitute or form part of an offer or contract, nor may they be regarded as representations. All interested parties must, themselves verify their accuracy. Where a room layout is included, this is for general guidance only, it is not to scale, and its accuracy cannot be confirmed.

# Pelham Road, Southsea, PO5 3DG

Lounge / kitchen / Diner

Bedroom 1

Bedroom 2

Bedroom 3

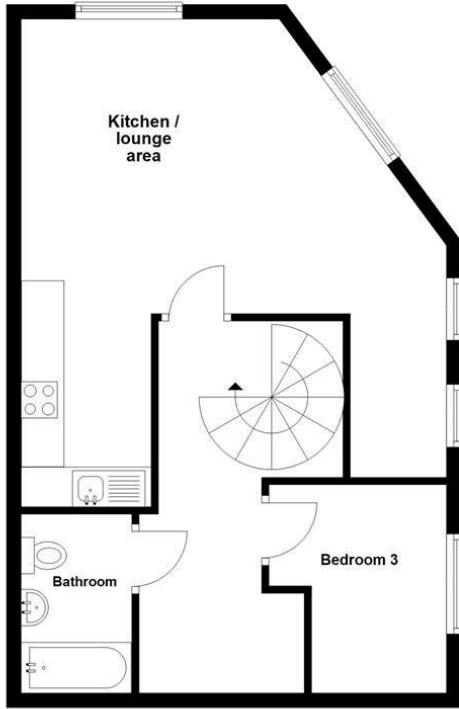
Hall

Bathroom

Shower Room

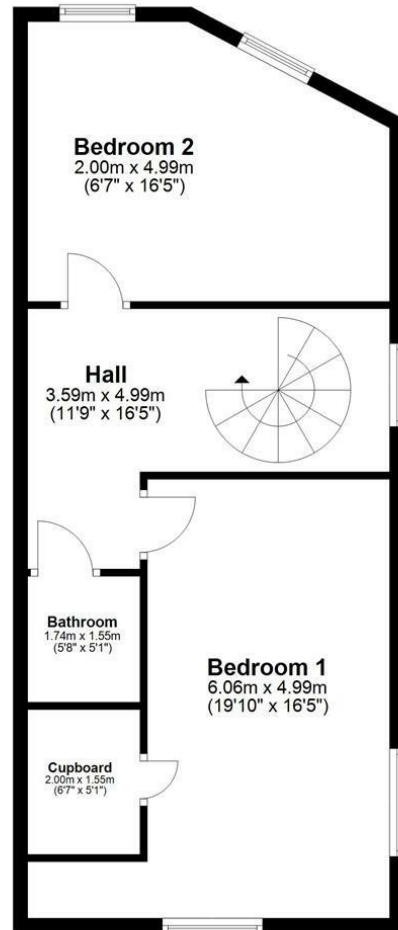
### Ground Floor

Approx. 46.6 sq. metres (501.4 sq. feet)  
(excluding Bathroom)



### First Floor

Approx. 59.7 sq. metres (642.9 sq. feet)



Total area: approx. 106.3 sq. metres (1144.3 sq. feet)

