

Hereford Road, W2



A bright and spacious part furnished 3 bedroom lateral apartment on the second floor of a red brick Victorian mansion block well located for the amenities of Notting Hill Gate and the green spaces of Kensington Gardens. PHOTOS AS PREVIOUSLY FURNISHED
Council tax band G Westminster- Deposit required

2297.00 sq ft | 2 RECEPTION ROOMS | 3 BEDROOMS | EN SUITE BATHROOM | SHOWER ROOM| KITCHEN| LIFT



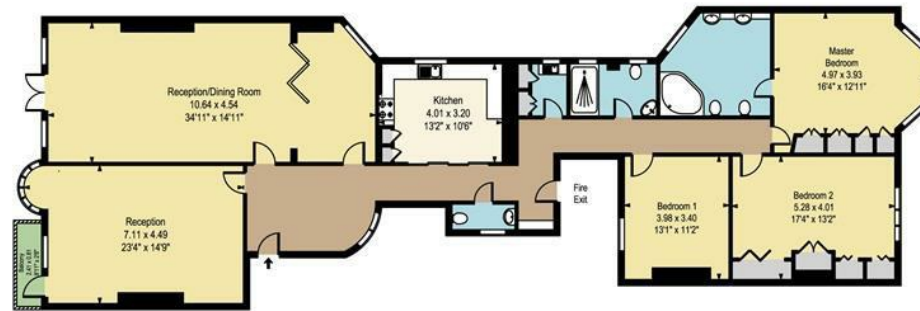
£1,760 Per Week

Part furnished

020 7937 9070
www.croftinternational.co.uk



Prince Edward Mansions Hereford Road, W2



Second Floor

Approx Gross Internal Area 2297 Sq Ft - 213.40 Sq M

Whilst every attempt has been made to ensure the accuracy of the floor plan contained here, measurements of the doors, windows, rooms and any other items are approximate and no responsibility is taken for any error, omission, or mis-statement. This plan is for illustrative purposes only and should be used as such by any prospective purchaser. The services, systems and appliances shown have not been tested and no guarantee as to their operability or efficiency can be given.

