



## Cronpace Road, SW6

£475,000

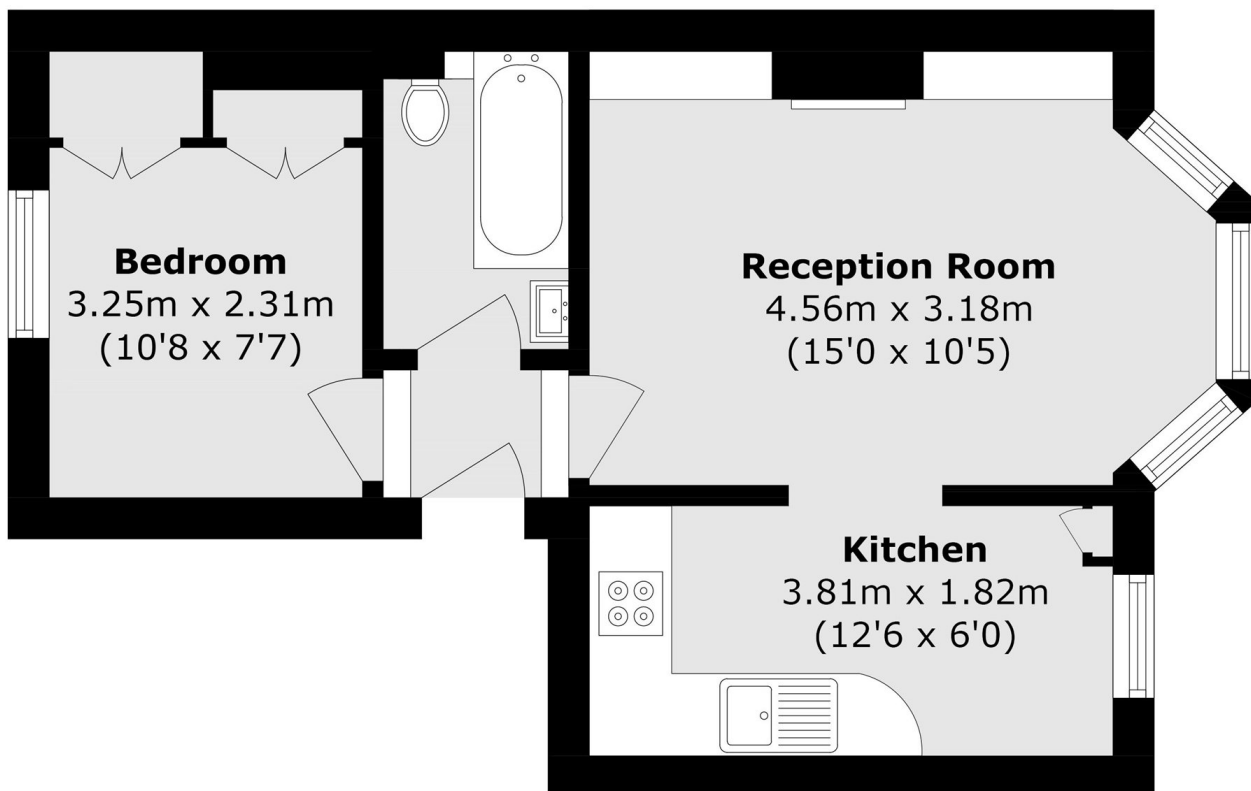
Occupying the first floor of an attractive Victorian building, this charming one bedroom apartment in one of Fulham's most sought after locations offers a bay-fronted reception room, complete with wooden flooring and a well-appointed eat-in kitchen.

Cronpace Road is ideally located next to Eel Brook Common as well as the amenities, boutique cafes and shops of New Kings Road. It benefits from being in close proximity to Hurlingham Park and is moments from Parsons Green.

### Features

- One Bedroom
- Share of Freehold
- Built-In Storage
- Generously Proportioned
- Period Features
- Parsons Green

# Crondace Road, London, SW6



## First Floor

Total area (approx.): 33.8 sq. m (364.0 sq. ft)