



Hillcrest, Chedgrave - NR14 6HX



Hillcrest

Chedgrave, Norwich

NO CHAIN. This DETACHED BUNGALOW presents a rare opportunity to secure a home in a SOUGHT AFTER CUL-DE-SAC SETTING, with over 1030 sq. ft (stms) of versatile accommodation and significant POTENTIAL TO UPDATE and MODERNISE to your own tastes. The inviting entrance porch and hall leads you through to a generous 21' OPEN PLAN EXTENDED SITTING/DINING ROOM, bathed in natural light from large windows and FRENCH DOORS - offering ample space for both relaxation and entertaining. The 13' KITCHEN overlooks the garden, providing a delightful aspect and plenty of room for culinary creativity, with scope to reimagine the space to suit modern lifestyles. There are THREE BEDROOMS, each well-proportioned and offering flexibility for family, guests, or home office use. The bathroom with SHOWER completes the interior, while plentiful built-in storage throughout ensures practicality is matched with comfort. This property is perfect for buyers seeking a single-storey lifestyle with the freedom to add their own personal touch.



With EXTENSIVE GARDENS TO FRONT AND REAR enjoying the SOUTH SUN, ideal for keen gardeners or those who love outdoor living, to the rear, a generous lawn is bordered by mature shrubbery and established hedging, creating a private and tranquil setting. Direct access leads to the adjoining GARAGE, featuring an ELECTRIC ROLLER DOOR to the front and a BRICK BUILT WORKSHOP.

Council Tax band: C
Tenure: Freehold

- No Chain!
- Detached Bungalow in a Sought After Cul-De-Sac Setting
- Potential to Update & Modernise
- Over 1030 Sq. ft (stms) of Accommodation
- 21' Open Plan Sitting/Dining Room
- 13' Kitchen with Garden Views
- Three Bedrooms
- Extensive Gardens to Front & Rear Enjoying the South Sun



Situated on the border of Loddon & Chedgrave, the property is situated within walking distance to local shops and amenities. There is an active community with numerous activities to suit all age groups, along with a vibrant village pub. A short walk and you reach the river network, whilst Loddon is very close and provides schooling, shops, post office, doctors surgery, library, a community gym, public houses, two churches, dentist and further access to the Broads network.

SETTING THE SCENE

Occupying a tucked away cul-de-sac setting, the property is approached via a hard standing driveway offering off road parking for several vehicles, with access leading to the main bungalow and adjoining garage. The front gardens are enclosed within brick wall boundaries with wrought iron railings, where an enclosed lawned expanse and patio seating area can be leading out from the main sitting room French doors.

THE GRAND TOUR

Once inside, a porch and hall entrance greets you with fitted carpet underfoot, built-in storage cupboard and loft access hatch above. Doors lead off to the bedroom and kitchen accommodation, whilst the main living space is towards the front of the bungalow. Extended and open plan, the sitting/dining room offers a feature fireplace creating a focal point to the room, with triple aspect views including the French doors which open up to the front garden. The kitchen sits to the rear of the bungalow finished with a fitted range of wall and base level units, with integrated cooking appliances including an inset electric ceramic hob with extractor fan above, and built-in eye level electric double oven with space for a fridge freezer and washing machine. Three bedrooms lead off the hall entrance, all finished with fitted carpet and uPVC double glazing, with a shower room finished with a white three piece suite including a walk-in double shower cubicle, electric shower with tiled splash-backs and vinyl flooring.

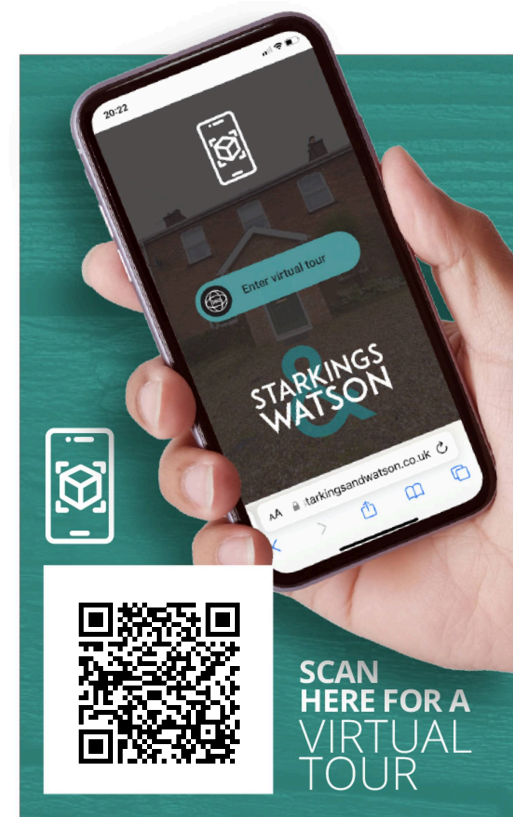
FIND US

Postcode : NR14 6HX

What3Words : ///possibly.stubbed.corrects

VIRTUAL TOUR

View our virtual tour for a full 360 degree of the interior of the property.



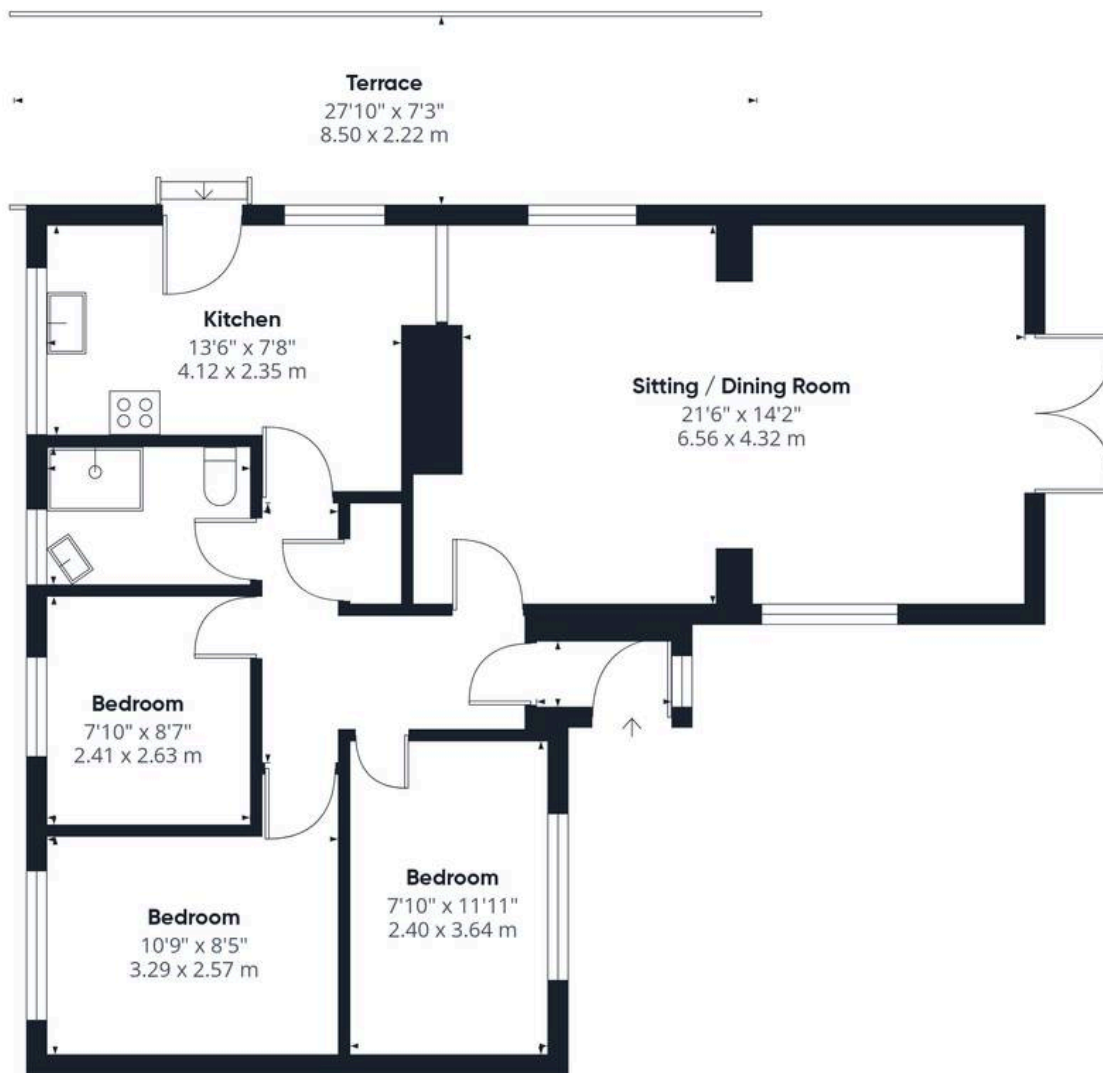




THE GREAT OUTDOORS

Heading outside from the kitchen, a lawned rear garden can be found with a side timber decked seating area enclosed within timber panelled fencing. The garden offers a range of mature shrubbery and hedging, with an outside water supply, timber built shed, greenhouse and access leading to the adjoining garage - complete with an electric roller door to front and brick built workshop.





Ground Floor Building 1



Ground Floor Building 2

Approximate total area⁽¹⁾

1038 ft²

96.4 m²

Balconies and terraces

202 ft²

18.8 m²

(1) Excluding balconies and terraces

Calculations reference the RICS IPMS 3C standard. Measurements are approximate and not to scale. This floor plan is intended for illustration only.

GIRAFFE360



Starkings & Watson Hybrid Estate Agents

2a High Street, Loddon - NR14 6AH

01508 820830 • loddon@starkingsandwatson.co.uk • starkingsandwatson.co.uk/

Disclaimer: Whilst every care has been taken to prepare these sales particulars, they are for guidance purposes only. All measurements are approximate and for general guidance purposes only and whilst every care has been taken to ensure their accuracy, they should not be relied upon and potential buyers are advised to recheck the measurements.