



Dynevor Road offers over £180,000

- Sizable Driveway & Garage
- Deceptively Spacious Throughout
- Modern Fitted Kitchen
- Low Maintenance Grounds
- Three Double Bedrooms
- EPC Rating: D



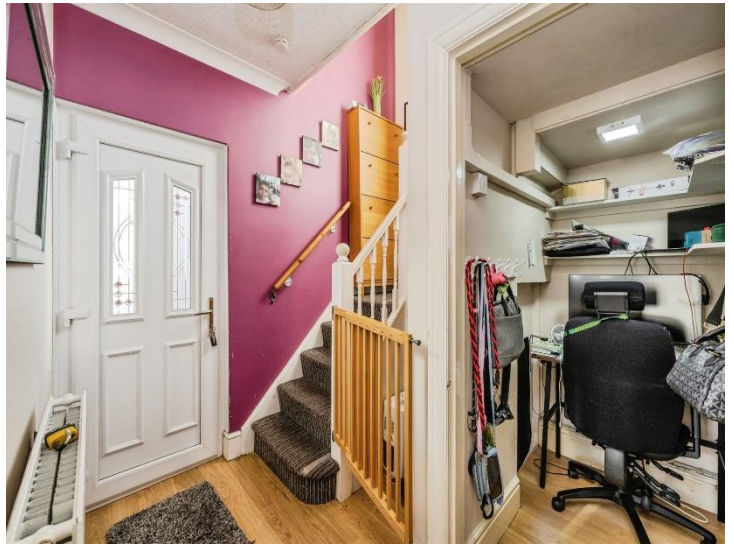
3 1 1



About the property

A beautifully presented and deceptively spacious, ideal family home or first time purchase, humbly nestled into the heart of Skewen, now available for sale with no on going chain! Excellent for attendance to Coedffranc Primary, Dwr Y Felin Community Comprehensive and Neath College! With fantastic links to local amenities including high street stores along New Road, a local train station, frequently running buses and ideal for commuters with great access to the A465 / M4 Corridor! The home is approached through a paved driveway which leads past the property and into the rear garden, laid with large patio and decked areas beside the Generous Garage! Entrance into the property is via a hallway, with stairs to the landing and storage / study space beneath. Doors lead through to a beautiful modern fitted kitchen and the generous open plan lounge / diner with a conservatory to the rear! The first floor houses all three double bedrooms, access to the loft space and the family bathroom! Internal viewings are highly recommended to truly appreciate this lovely home!





Accommodation

Entrance Hall

Study - Under Stairs

4' 9" x 3' (1.45m x 0.91m)

Lounge Area

11' 7" x 10' 3" Max (3.53m x 3.12m Max)

Dining Area

10' 3" x 9' 9" Plus Bay Window (3.12m x 2.97m Plus Bay Window)

Kitchen

12' 4" x 8' 1" (3.76m x 2.46m)

Conservatory

12' 1" x 6' (3.68m x 1.83m)

Landing

Bedroom One

12' 7" max x 9' 4" max (3.84m max x 2.84m max)

Bedroom Two

11' 7" x 9' 3" Max (3.53m x 2.82m Max)

Bedroom Three

8' 4" x 8' 3" (2.54m x 2.51m)

Bathroom

Front & Rear Gardens

Garage

16' 3" x 11' 8" (4.95m x 3.56m)

Floorplan



This floor plan is for illustrative purposes only. It is not drawn to scale. Any measurements, floor areas (including any total floor area), openings and orientation are approximate. No details are guaranteed, they cannot be relied upon for any purpose and they do not form part of any agreement. No liability is taken for any error, omission or misstatement. A party must rely upon its own inspection(s). Powered by www.focalagent.com

Important Information

Note while we endeavour to make our sales details accurate and reliable, if there is any point which is of particular interest to you, please contact the office and we will be pleased to confirm the position for you. We have not personally tested any apparatus, equipment, fixtures, fittings or services and cannot verify they are in working order or fit for their purposes. Nothing in these particulars is intended to indicate that carpets or curtains, furnishings or fittings, electrical goods (whether wired or not). Gas fires or light fittings or any other fixtures not expressly included form part of the property offered for sale. This computer generated Floorplan, if applicable, is intended as a general guide to the layout and design of the property. It is not to scale and should not be relied upon for dimensions. Tenure: We cannot confirm the tenure of the property as we have not had access to the legal documents. The buyer is advised to obtain verification from their solicitor or surveyor.

Peter Alan Limited is registered in England and Wales under company number 2073153, Registered Office is Cumbria House, 16-20 Hockliffe Street, Leighton Buzzard, Bedfordshire, LU7 1GN. VAT Registration Number is 500 2481 05. For activities relating to regulated mortgages and non-investment insurance contracts, Peter Alan Limited is an appointed representative of Connells Limited which is authorised and regulated by the Financial Conduct Authority. Connells Limited's Financial Services Register number is 302221. Most buy-to-let