

# 19 Village Centre, £285,000

(Other charges apply)

RICHMOND  
VILLAGES

Part of Bupa

SF

2



1



EPC - C



## 2 bedroom second floor apartment

Set in established grounds, Richmond Villages Northampton is a welcoming retirement community, conveniently positioned in the heart of the midlands. A spacious second floor two bedroom Assisted Living Apartment comprises entrance hall, living room, kitchenette, two double bedrooms and a shower room. This apartment has been recarpeted and decorated to a high standard throughout, in order to move straight into.

### Specification

- A spacious living room with French doors leading to a private balcony with views across the village gardens. Feature fireplace with attractive surround.
- Modern fitted kitchenette with range of wall and base units and integrated fridge with freezer compartment.
- Bright and airy main bedroom.
- Generously sized second bedroom.
- Shower room with walk-in shower and fully fitted suite.
- Entrance hall with storage cupboard.
- TV and satellite points\*.
- Well stocked flower borders and lawns maintained by the Village Gardeners.
- Allocated parking space for resident car owner.



\*Satellite subscription not included.

Important Notice: These particulars are intended to give a fair and substantially correct overall description. **Other fees and charges apply**, please contact the Village Advisers for further details. Properties are sold on a 125 year lease and this property has 106 years remaining.

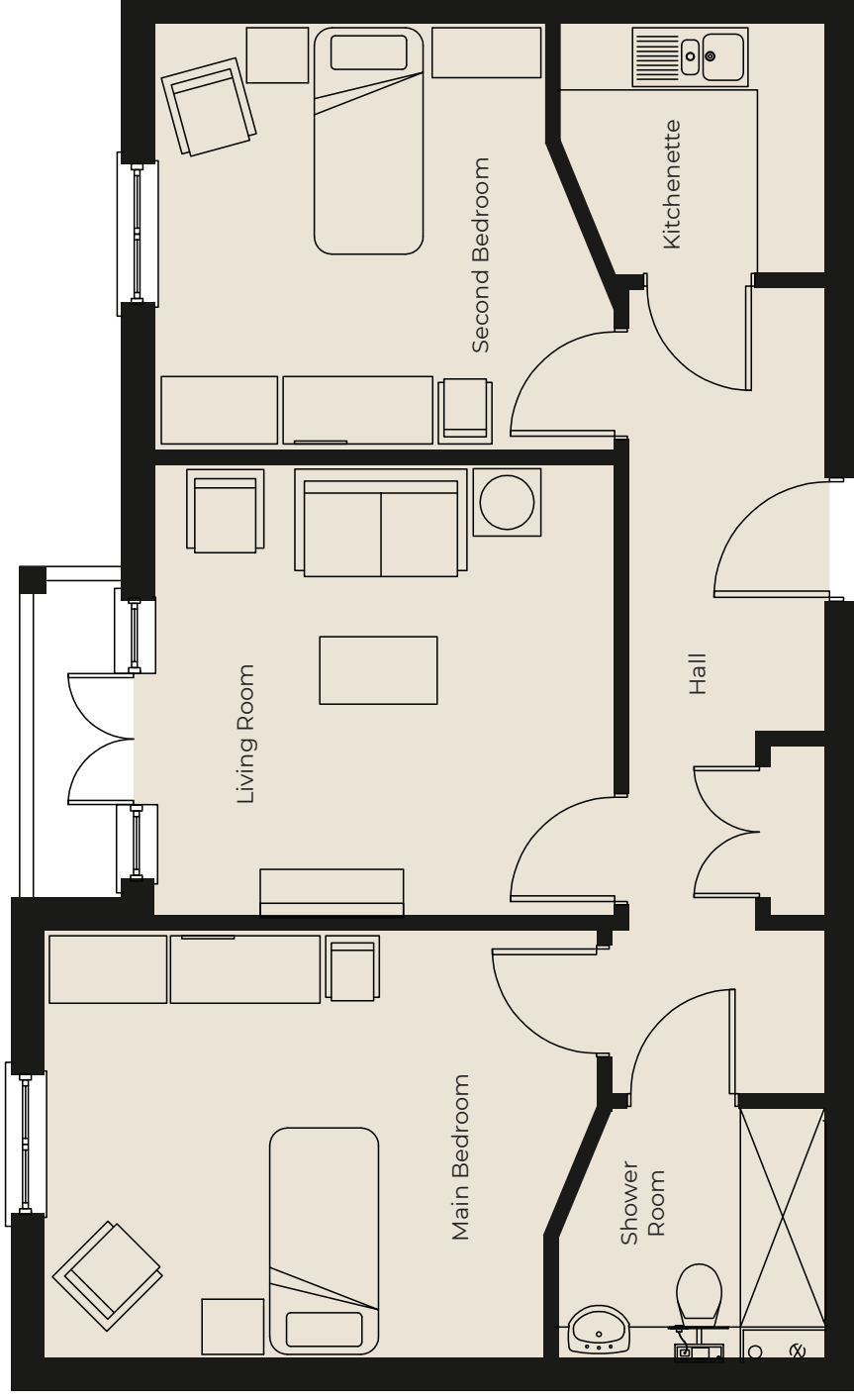
01604 432 600

northampton@richmond-villages.com

Richmond Villages Northampton,  
Bridge Meadow Way, Grange Park, Northampton NN4 5EB

# 19 Village Centre

Second Floor | 64m<sup>2</sup>



- Kitchenette**  
2300mm x 2180mm  
7'3" x 7'2"
- Living Room**  
3936mm x 3880mm  
12'9" x 12'7"
- Main Bedroom**  
4751mm x 3710mm  
15'5" x 12'11"
- Second Bedroom**  
3936mm x 3710mm  
12'9" x 12'11"
- Shower Room**  
2300mm x 2180mm  
7'7" x 7'2"

These particulars are intended to give a fair and substantially correct overall description.

Measurements have been taken at 1500mm skirting height.

All dimensions are approximate. Bedroom measurements include the wardrobe if applicable. Room measurements include bay windows if applicable.

Furniture layout is to give an indicative impression. Although all efforts have been made to ensure its accuracy at time of print dimensions, fixtures, fittings, finishes and specifications are subject to change without notice.

The properties are sold unfurnished.

