



Manbre Road, W6

£950,000

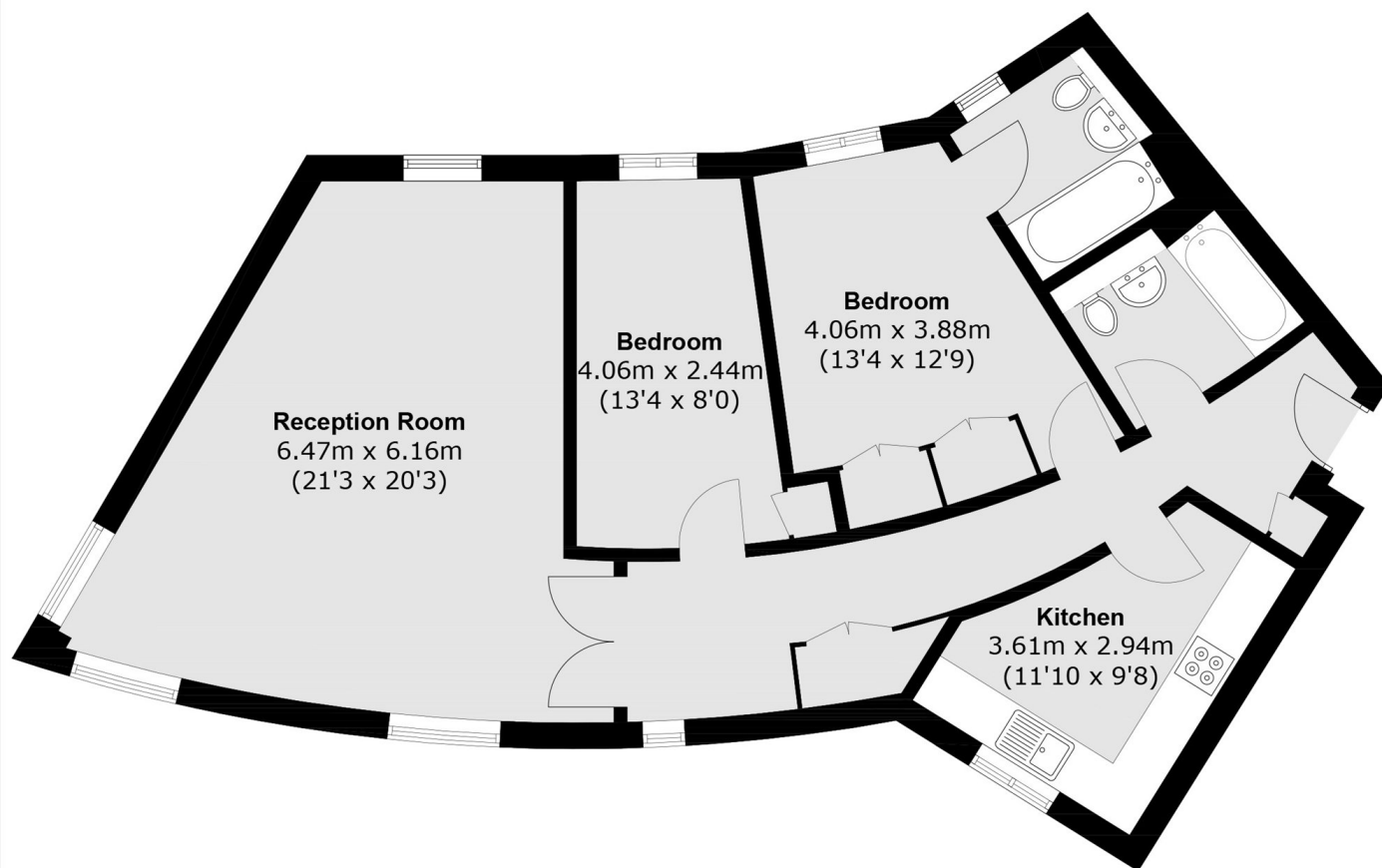
Situated on the banks of the River Thames, this spacious two bedroom, two bathroom apartment benefits from direct views extending across to the river to Hammersmith Bridge and beyond. The development offers an on-site concierge along with allocated gated parking, providing safe and secure living in the heart of Hammersmith.

King Henrys Reach is an ideal location on the river front, close to the famous River Cafe, as well as a variety of other historic, social and commercial aspects of West London. It is moments away from a multitude of transport links including Hammersmith Underground Station as well as being comfortably within reach of Heathrow Airport.

Features

- River Views
- Two Double Bedrooms
- Lift and Concierge
- Off Street Gated Parking Space
- Riverside Development
- Hammersmith Station

Manbre Road, London, W6



Total area (approx.): 83.8 sq. m (902.0 sq. ft)

Dexters

Hammersmith
164-166 King Street
London
W6 0QU
Sales
020 8939 6061

Energy Rating: TBC. We aim to make our particulars both accurate and reliable. However they are not guaranteed; nor do they form part of an offer or contract. If you require clarification on any points then please contact us, especially if you're traveling some distance to view. Please note that appliances and heating systems have not been tested and therefore no warranties can be given as to their good working order.

 **RICS** | Regulated
Estate Agent
and Letting Agent

[dexters.co.uk](https://www.dexters.co.uk)