



Mapesbury Gardens | Brondesbury | London | NW6

Guide Price - £800,000

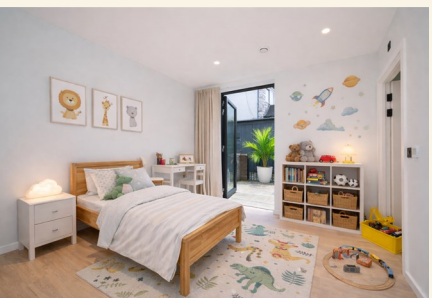


- Three Bedrooms
- Private Terrace
- Share of Freehold
- Close to transport links
- Two Bathrooms
- Communal Garden
- Bike Store
- Off street parking available

Set within a new, apartment building on Mapesbury Gardens, this well presented three bedroom, two bathroom apartment offers well proportioned accommodation finished to a high standard throughout.

The property features wooden flooring across all principal rooms and a practical, well planned layout suited to contemporary living. Accommodation comprises three generously sized bedrooms and two modern bathrooms. The reception space is bright and well laid out, complemented by a modern kitchen with stylish finishes designed for everyday use.

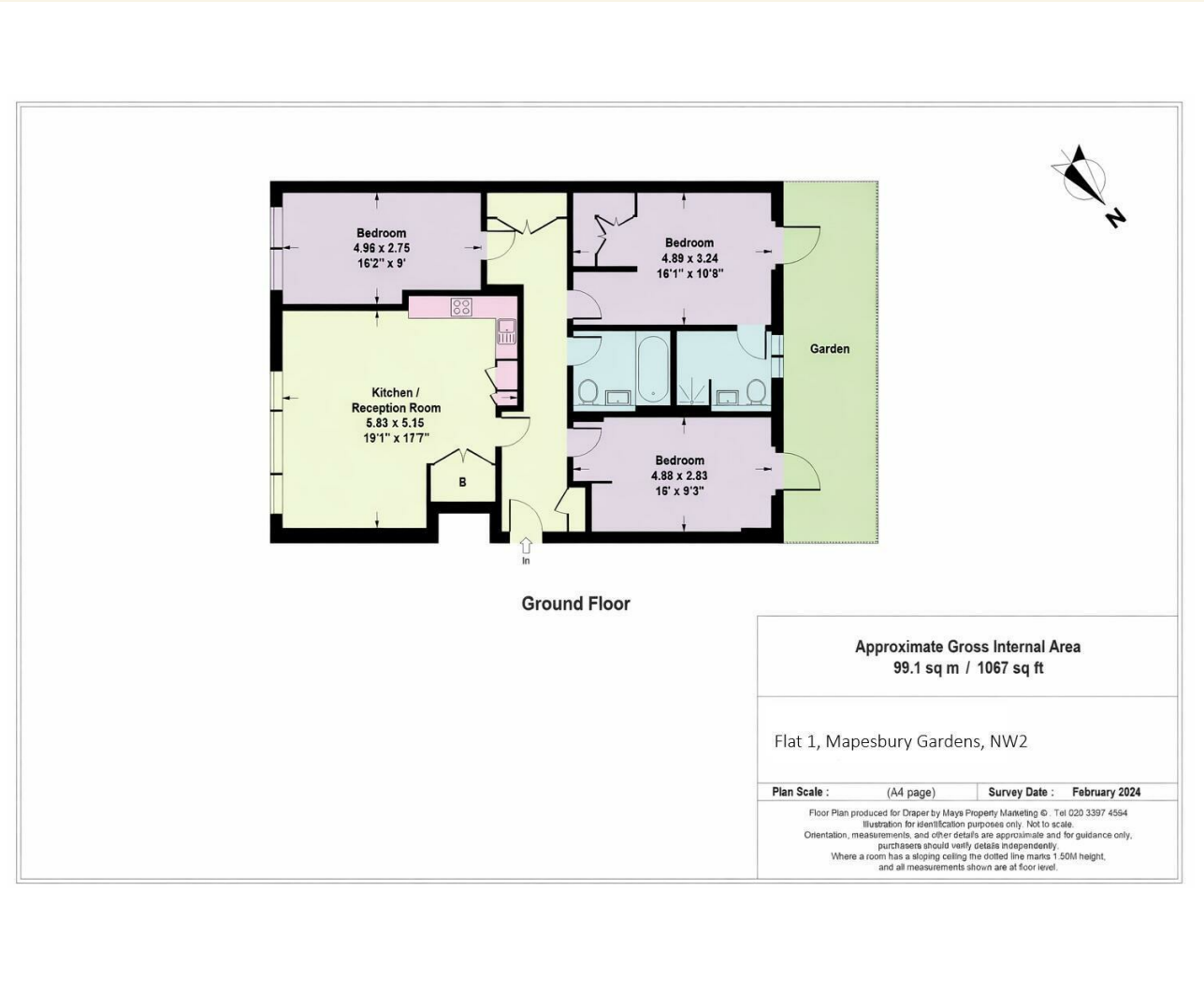
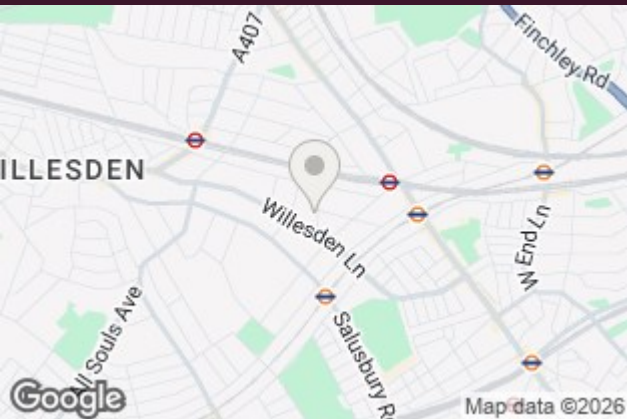




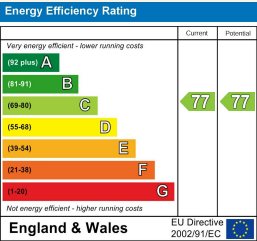
Mapesbury Gardens is conveniently positioned in NW6, within easy reach of local shops, cafés and amenities, as well as the wider offerings of Queen's Park, Kilburn and West Hampstead. The area is well regarded for its selection of highly rated schools, making it a popular choice for families.

Transport links are excellent, with Brondesbury Park (Overground), Kilburn (Jubilee Line) and Queen's Park (Bakerloo Line) all close by.

* Please note some furniture has been digitally added



Council Tax Band **D** EPC Rating **C**



24 Bristol Gardens
London
W9 2JQ
hello@draperlondon.com
0203 143 1900