



**Falcon Close, Nuneaton  
CV11 6TE  
£379,950**

**Freehold - Nuneaton & Bedworth Band: D - EPC: C**

\* NO UPWARD CHAIN - WELL PRESENTED EXTENDED DETACHED FAMILY HOME \* Pointons Estate Agents are delighted to offer for sale this extended four bedroom detached family home on the quiet cul de sac of Falcon Close, Whitestone, Nuneaton, close to local shops, schools, further amenities and offering excellent transport links, offered with no chain and benefitting from gas central heating and double glazing throughout, in brief the property comprises of an entrance hall with downstairs WC, living room, kitchen and extended sitting room, to the first floor there are four bedrooms and a shower room. Driveway and garden to front with detached garage and a large rear garden made up of two sections and seating areas, this home must be viewed to show the quality and space on offer, viewings are strictly via the agent.



## Entrance Hall

Via front door with doors off to various rooms, radiator and stairs off to the first floor.

## WC

With WC, hand wash basin with taps over and obscure double glazed window to side.

## Living Room

16'9" x 11'6" (5.10m x 3.50m)

Freshly decorated and newly carpeted with double glazed window to front, radiator, coving to ceiling and log burner fireplace.

## Kitchen

14'5" x 15'5" (4.40m x 4.70m)

Fitted with a matching range of base and eye level units with worktop space over, sink units with taps over, fitted four ring electric hob, eye level fan assisted oven, integrated fridge/freezer, dishwasher and washing machine, radiator and side door, open to

## Sitting Room

10'6" x 16'1" (3.20m x 4.90m)

Freshly decorated with double glazed windows to side and rear, french doors to rear and two radiators.

## Landing

Doors off to various rooms.

## Bedroom

13'9" x 8'6" (4.20m x 2.60m)

Freshly decorated and newly carpeted with double glazed window to front and radiator.

## Bedroom

7'7" x 6'3" (2.30m x 1.90m)

Freshly decorated and newly carpeted with double glazed window to side and radiator.

## Bedroom

11'2" x 8'6" (3.40m x 2.60m)

Freshly decorated and newly carpeted with double glazed window to rear, storage cupboard and new radiator.

## Bedroom

8'2" x 6'3" (2.50m x 1.90m)

With double glazed window to rear and radiator.

## Shower Room

Fitted with shower cubicle and screen, WC, hand wash basin with taps over, heated towel rail and obscure double glazed window to rear.

## Outside

To front there is a tarmacked driveway for numerous vehicles and stoned

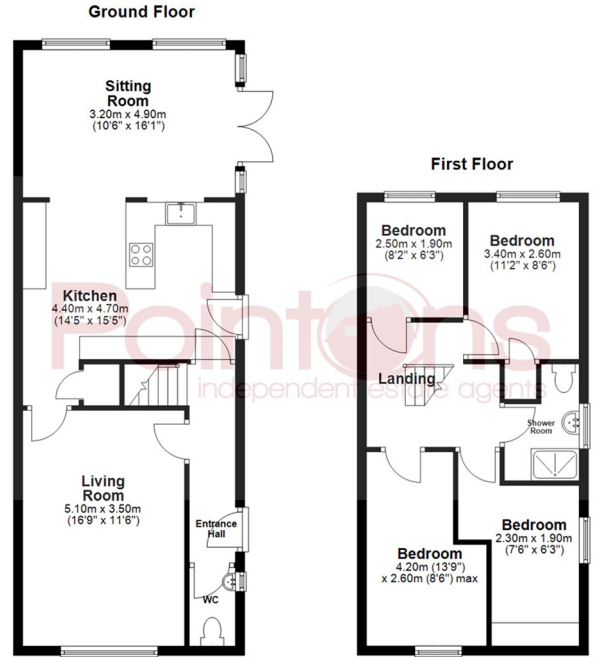
section with shrubs, side gated access to rear which is made up of two unique gardens made up of patio and artificial areas with shrubs, greenhouse and free standing shed.

## Garage

With up and over door with power and lighting.

## General Information

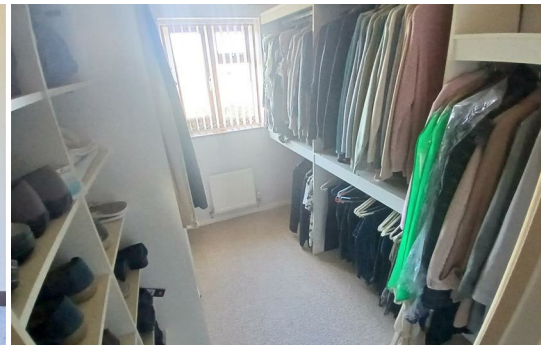
Please Note: All fixtures & Fittings are excluded unless detailed in these particulars. None of the equipment mentioned in these particulars has been tested; purchasers should ensure the working order and general condition of any such items.



All floor plans are for a guide of the layout and not to scale. Plan produced using PlanUp.

Energy Efficiency Rating		Current	Potential
Very energy efficient - lower running costs			
(92 plus) A			
(81-91) B			
(69-80) C			
(55-68) D			
(39-54) E			
(21-38) F			
(1-20) G			
Not energy efficient - higher running costs			
England & Wales		70	78
		EU Directive 2002/91/EC	

Environmental Impact (CO <sub>2</sub> ) Rating		Current	Potential
Very environmentally friendly - lower CO <sub>2</sub> emissions			
(92 plus) A			
(81-91) B			
(69-80) C			
(55-68) D			
(39-54) E			
(21-38) F			
(1-20) G			
Not environmentally friendly - higher CO <sub>2</sub> emissions			
England & Wales			
		EU Directive 2002/91/EC	



**COVENTRY, CV1 2NT**  
 coventry@pointons-group.com  
 024 7710 333  
 Company No: 7359350

**NUNEATON, CV11 4AL**  
 nuneaton@pointons-group.com  
 024 7637 3300  
 Company No: 6743033

**ATHERSTONE, CV9 1AU**  
 atherstone@pointons-group.com  
 01827 711911  
 Company No: 81323250

