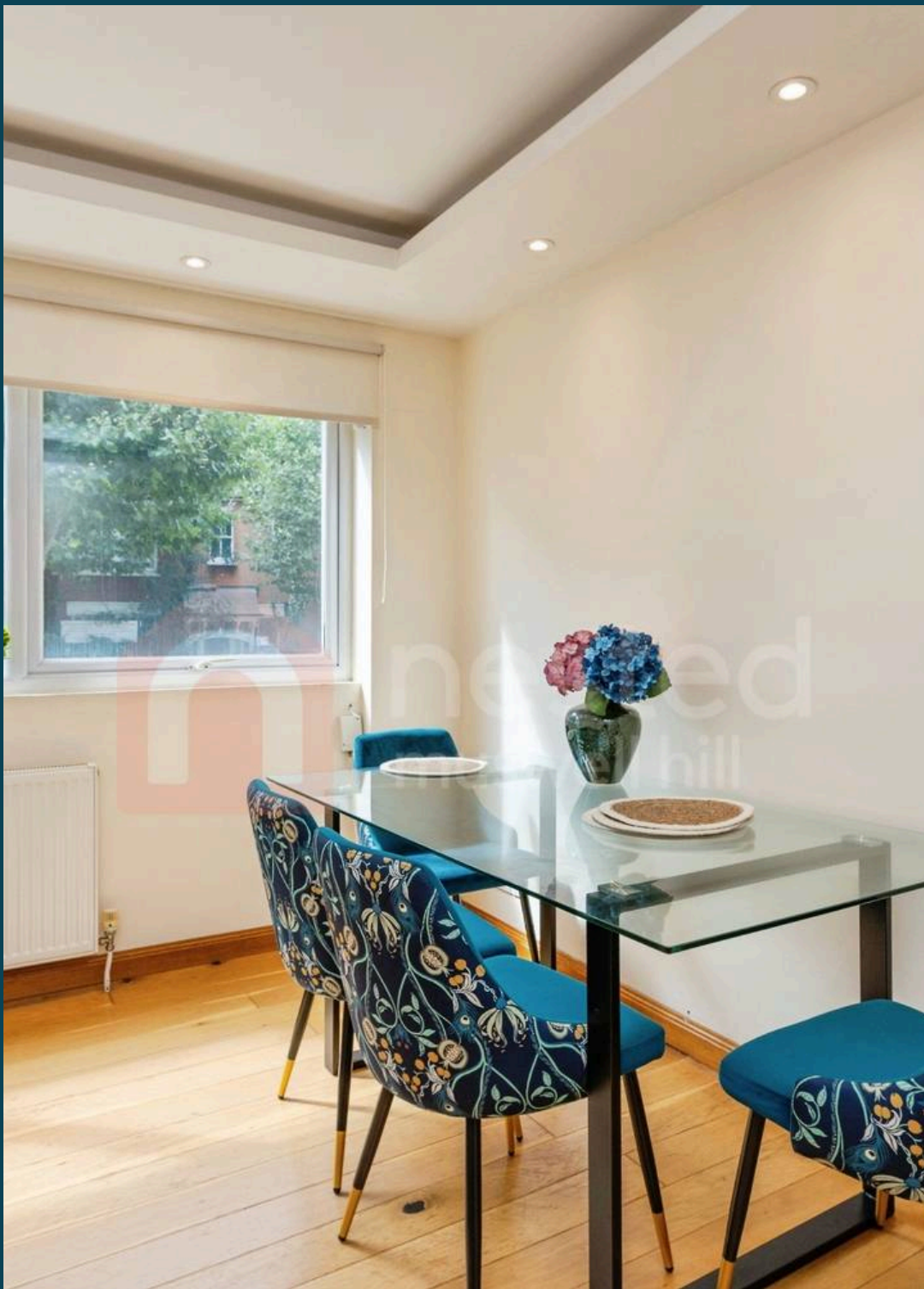




Muswell Road, London

Guide Price £350,000





Flat 5

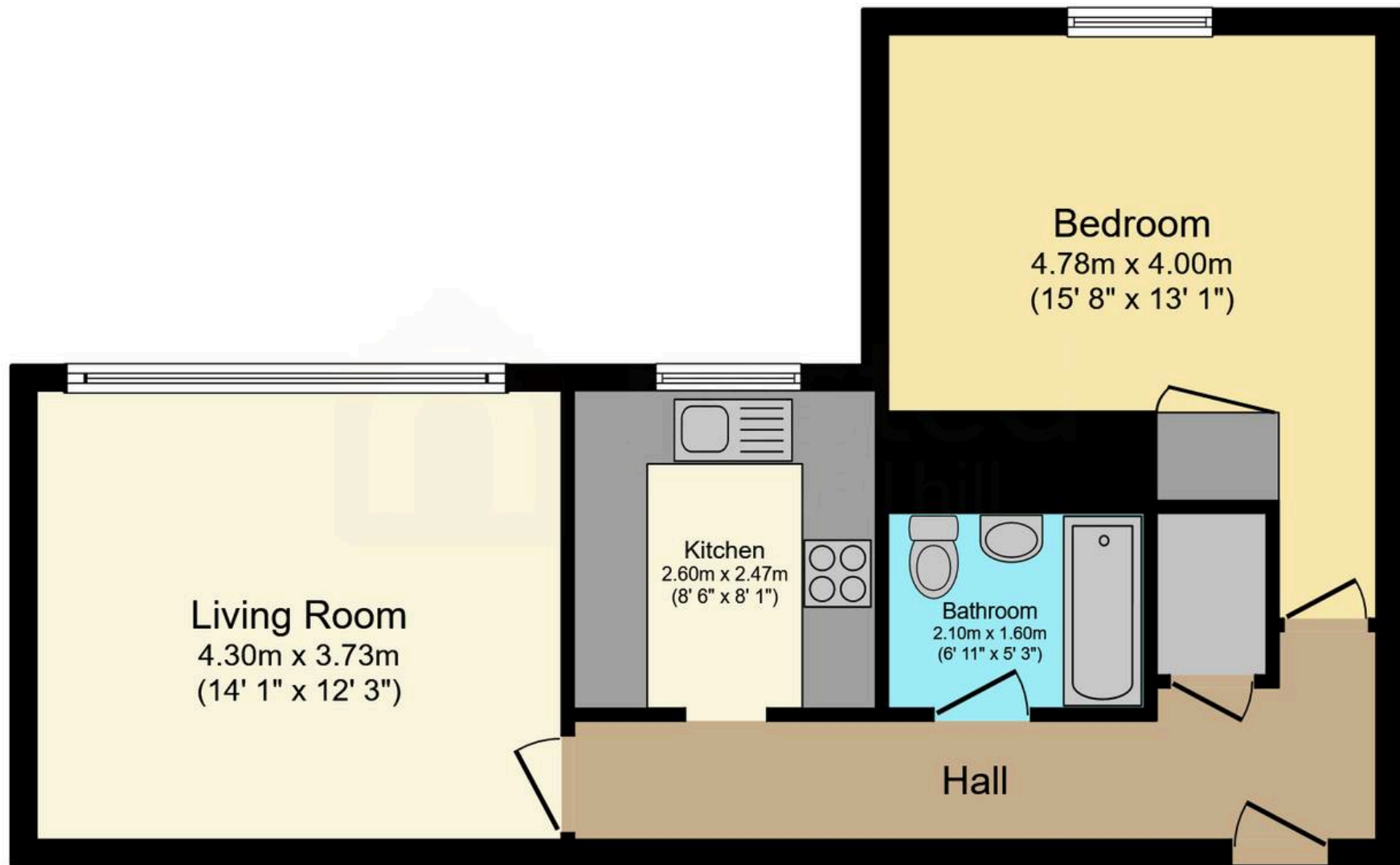
Rowan 48-50 Muswell Road, London

Council Tax band: C

Tenure: Leasehold

- Central Muswell Hill location
- Arranged over 559 SQFT (52 SQM)
- Large double glazed windows
- EPC rating C
- Wooden flooring
- Alexandra Palace and park are nearby





Floor Plan

Floor area 52.0 sq.m. (559 sq.ft.)

Total floor area: 52.0 sq.m. (559 sq.ft.)

This floor plan is for illustrative purposes only. It is not drawn to scale. Any measurements, floor areas (including any total floor area), openings and orientations are approximate. No details are guaranteed, they cannot be relied upon for any purpose and do not form any part of any agreement. No liability is taken for any error, omission or misstatement. A party must rely upon its own inspection(s). Powered by www.Propertybox.io



Nested Muswell Hill

Fora, 9 Dallington Street, London - EC1V 0LN

020 3886 2318 • rowland.slinn@nested.com • nested.com/

