



Parkview, Houlton

£280,000

2 2

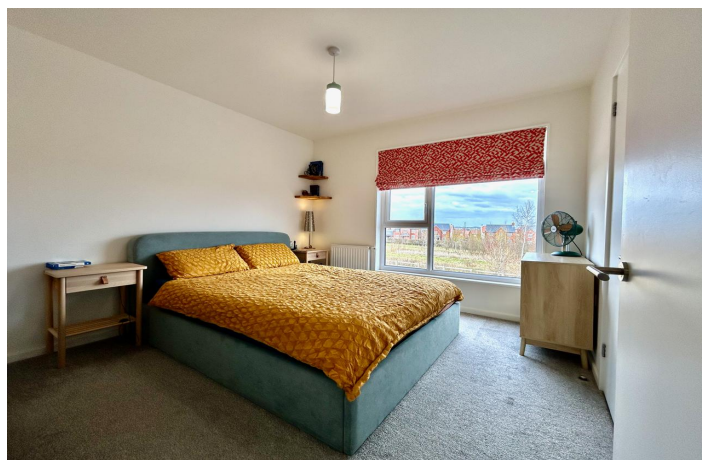
Caldecott Property are proud to present this stunning two-bedroom home, offering modern living in a sought-after location.

This spacious property boasts allocated parking for two vehicles and a south-facing garden, perfect for enjoying the sun all day long. The open-plan kitchen, dining, and lounge area creates a bright and welcoming space, ideal for entertaining or relaxing.

The master bedroom benefits from an en-suite, while the large second double bedroom is served by a stylish main bathroom. With an air source heat pump to enhance energy efficiency and keep bills low, this home is both comfortable and cost-effective.

Don't miss the opportunity to make this fantastic property your own. Contact Caldecott Property today to arrange a viewing!

- Open Plan Living
- South Facing Garden
- Close to Amenities
- Parking for 2 Vehicles
- Eco Friendly
- Save on Bills



Floor Area: 796 sq. ft.

Tenure: Freehold

Service Charge: £372 per annum

Ground Rent: £0 per annum

Energy Efficiency Rating		
	Current	Potential
Very energy efficient – lower running costs		
(92 plus) A		100
(81-91) B	87	
(69-80) C		
(55-68) D		
(39-54) E		
(21-38) F		
(1-20) G		
Not energy efficient – higher running costs		
England & Wales	EU Directive 2002/91/EC 