



## Blackheath Hill, SE10

£450,000

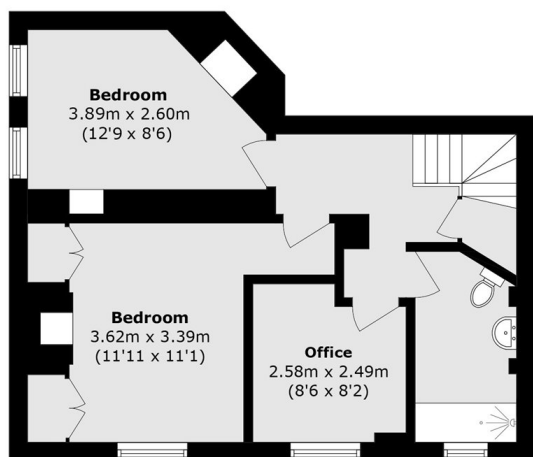
An opportunity to acquire this charming two/three bedroom split level period conversion with its own front door and private garden. The property is offered to the market chain free and benefits from a share of the freehold. A viewing is highly recommended.

Situated on Blackheath Hill in SE10, this home sits between Blackheath Village and Greenwich, two of London's most desirable neighbourhoods. The wide green expanse of Blackheath is just a short walk away, while Greenwich's historic attractions including the Royal Observatory, National Maritime Museum and Cutty Sark are close by. Transport links are excellent, with Greenwich, Deptford Bridge and Lewisham stations offering fast access to the DLR, National Rail and major bus routes for quick journeys to Canary Wharf, the City, London Bridge, Charing Cross and Bank.

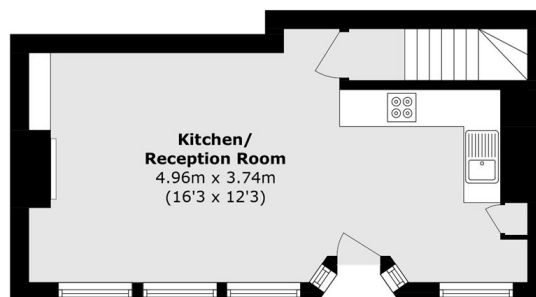
### Features

- Chain Free
- Private Garden
- Split Level
- Period Conversion
- Sought After Location
- Share Of Freehold

# Blackheath Hill, London, SE10



**Lower Ground Floor**



**Ground Floor**

Total area (approx.): 76.5 sq. m (823.4 sq. ft)