

Highgrove Close, N11

£699,500

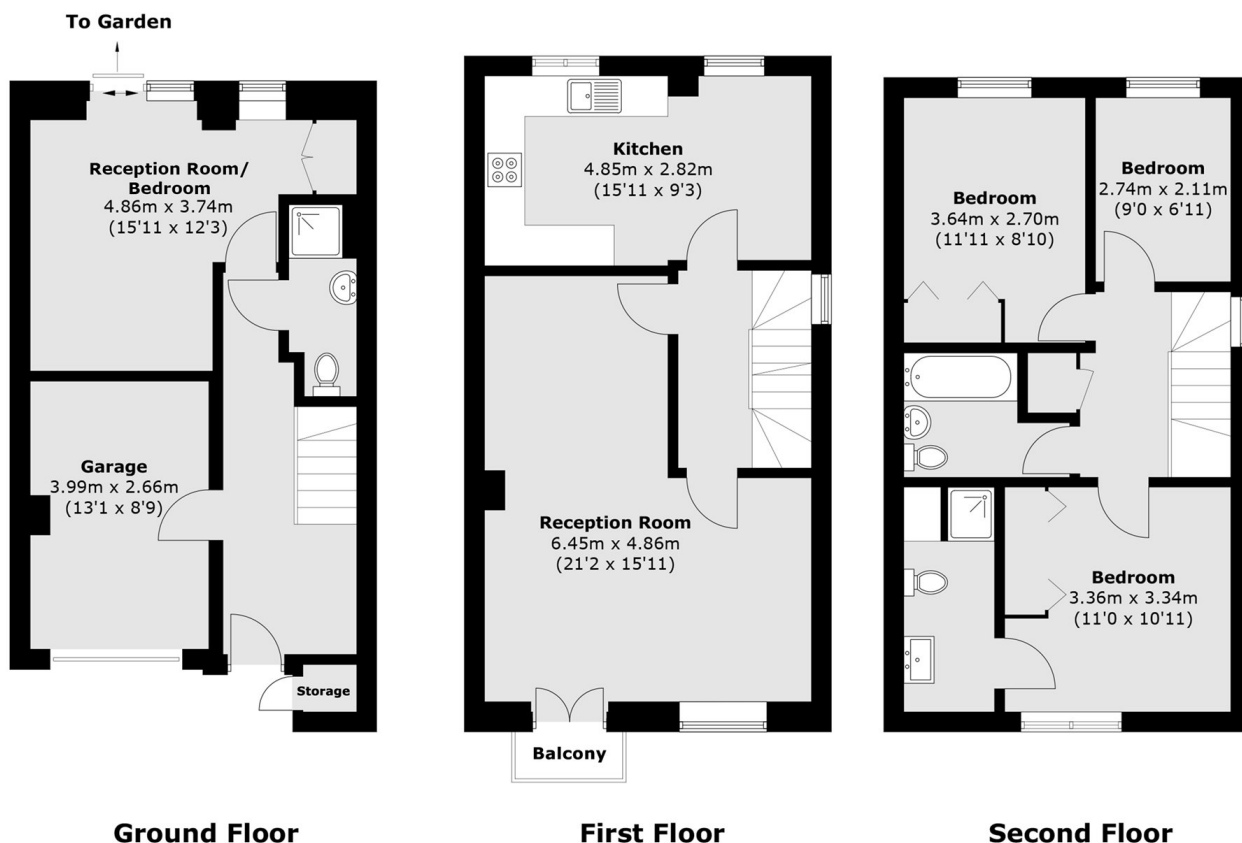
Offered on a chain-free basis is this end-of-terrace townhouse, comprising four bedrooms, three bathrooms, a garage, and an off-street parking space. This home also benefits from a large reception room and a separate eat-in kitchen area. It is double-glazed throughout and features a private rear garden.

Highgrove Close is a sought after residential location, running just off Colney Hatch Lane, providing excellent access to Muswell Hill, Friern Barnet and New Southgate, providing a lovely selection of local shops and transport links into Central London.

Features

Four Bedrooms
Three Bathrooms
Off Street Parking
End Of Terrace
Double Glazing
Chain Free

Highgrove Close, London, N11



Total area (approx.): 129.9 sq. m (1,398.2 sq. ft)
(Including Garage & Excluding Balcony)
Balcony area (approx.): 1.6 sq. m (17.2 sq. ft)
External Storage: 0.5 sq. m (5.3 sq. ft)