



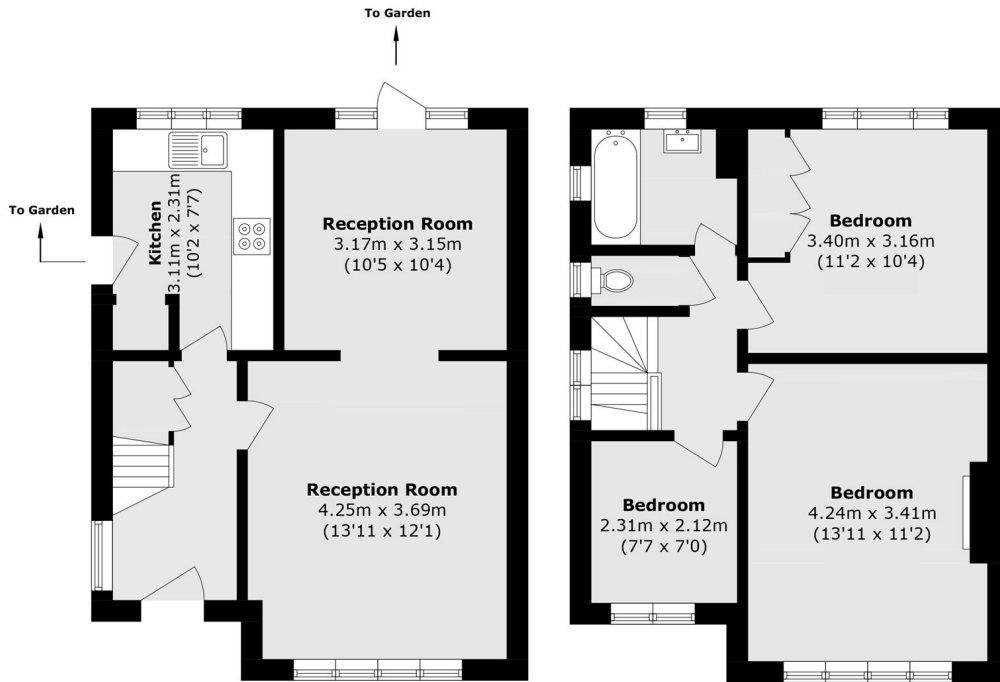
## Chinnor Crescent, UB6

£600 pw (£2,600 pcm)

A three bedroom semi-detached house with a large double reception room, a separate kitchen. There is also a large private garden and driveway.

Chinnor Crescent is ideally located close to Greenford Broadway and is connected to Central London by various transport links.

- Three Bedrooms • Greenford • Driveway •



**Ground Floor**

**First Floor**

Total area (approx.): 81.4 sq. m (876.1 sq. ft)

Robertson Smith & Kempson Ealing Lettings  
1 The Broadway,  
London, W5 2NT  
020 8840 7885  
ealinglettings@robertsonsmithandkempson.co.uk

Energy Rating: E. We aim to make our particulars both accurate and reliable. However they are not guaranteed; nor do they form part of an offer or contract. If you require clarification on any points then please contact us, especially if you're traveling some distance to view. Please note that appliances and heating systems have not been tested and therefore no warranties can be given as to their good working order.