



Price

£250,000

Leasehold

2x  1x  1x 

**Charlotte Way,
Leybourne, West
Malling, Kent, ME19**

OVER 60?

Secure this property
for up to **59% less!**

Wards
Helping you move forwards



Main features

- Modern top floor apartment
- 2 bathrooms
- Allocated parking space
- Spacious and bright apartment with Juliette balcony
- Chain free with no complications

Accommodation

TOP FLOOR

Entrance Hall

Lounge/Kitchen/Diner: 25'4 x 11'3 (7.73m x 3.43m)

Bedroom 1: 16'6 x 9'6 (5.03m x 2.90m)

En-Suite Shower Room

Bedroom 2: 12'9 x 9'3 (3.89m x 2.82m)

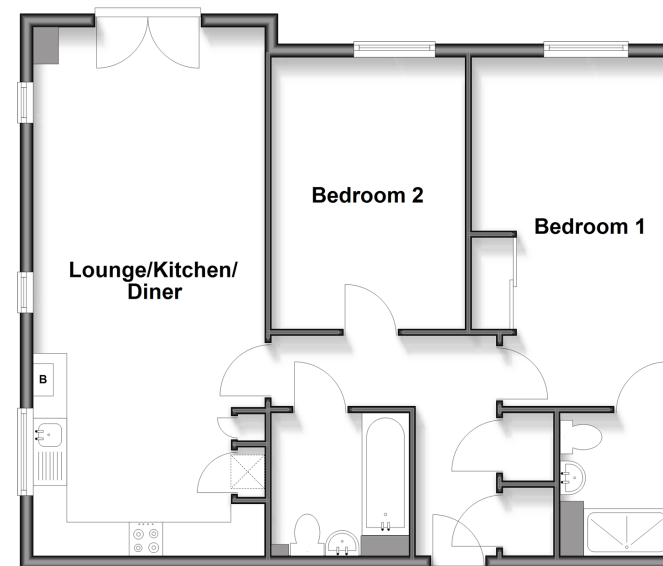
Bathroom

OUTSIDE

Allocated Parking Space

Top Floor

Approx. 71.8 sq. metres (772.4 sq. feet)



Call Kings Hill - 01732 222211 ■ wardsofkent.co.uk

- Legal advice should be taken to verify fixtures/fittings, planning, alterations and/or lease details
- Through a Homewise Home For Life Plan people aged 60+ can secure this property for up to 59% less, by purchasing a Lifetime Lease.

- Appliances & services are untested, dimensions are approximate and floor plans are not to scale