



# BEAUFORT GREEN

# Stephendale Road, SW6

£475,000



A modern, split level one double bedroom apartment on the top floor of this recently converted period building.

This modern, split-level apartment offers a unique living space on the top floor of a recently converted period building. It features an open-plan kitchen and living room that provides a spacious, airy feel, perfect for contemporary living. The generously sized double bedroom adds to the comfort, making this an ideal home for individuals or couples. A standout feature of the property is the enviable roof terrace, offering a private outdoor space with stunning views, perfect for relaxation or entertaining.

Located on Stephendale Road in the sought-after 'Sands End' area, this property enjoys a prime location near the River Thames, providing scenic riverside walks and leisure opportunities. With easy access to nearby transport links, including Imperial Wharf, Fulham Broadway, and Parsons Green stations, commuting and exploring London are made convenient. Sands End's charming residential streets, combined with its proximity to local amenities, make this apartment a fantastic opportunity for those seeking a blend of modern living and historic charm.

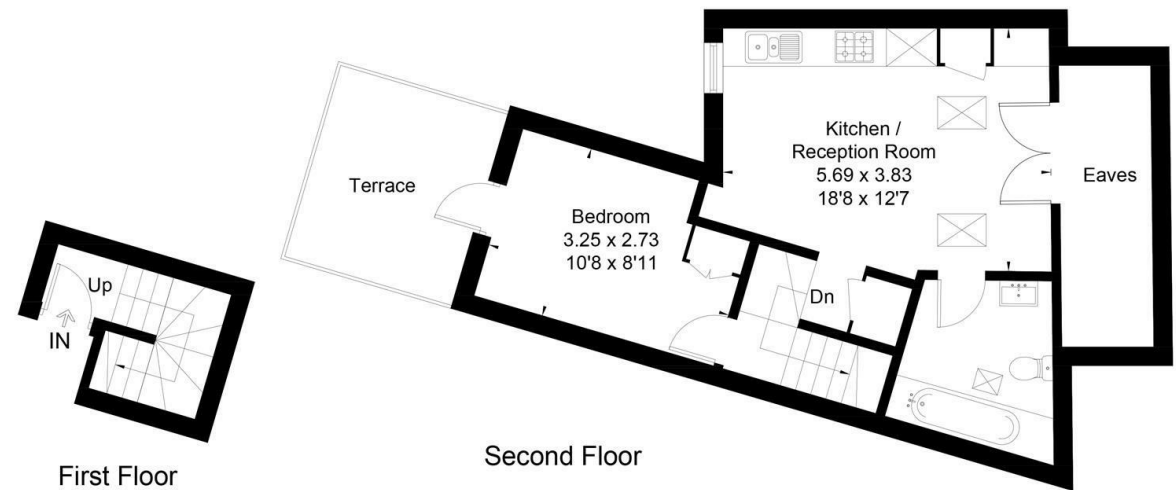




BEAUFORT GREEN

# BEAUFORT GREEN

Approximate Floor Area = 54 sq m / 581 sq ft (Including Eaves)



## At a Glance.

- One Double Bedroom
- Split Level
- Period Conversion
- Private Roof Terrace
- Open Plan Kitchen Living Room
- Well Finished Throughout



This floor plan has been drawn in accordance with RICS Property Measurement 2nd edition.  
All measurements, including the floor area, are approximate and for illustrative purposes only. @fourwalls-group.com #77276

# BEAUFORT GREEN

02074594100

[charlie@beaufortgreen.co.uk](mailto:charlie@beaufortgreen.co.uk)

---

263 New Kings Road  
London  
SW16 1DB