

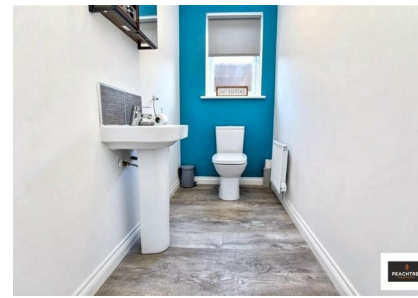
26 Northbrae View, Bishopton, PA7 5DN

Offers Over £264,995

EPC Rating: Council Tax Band: D



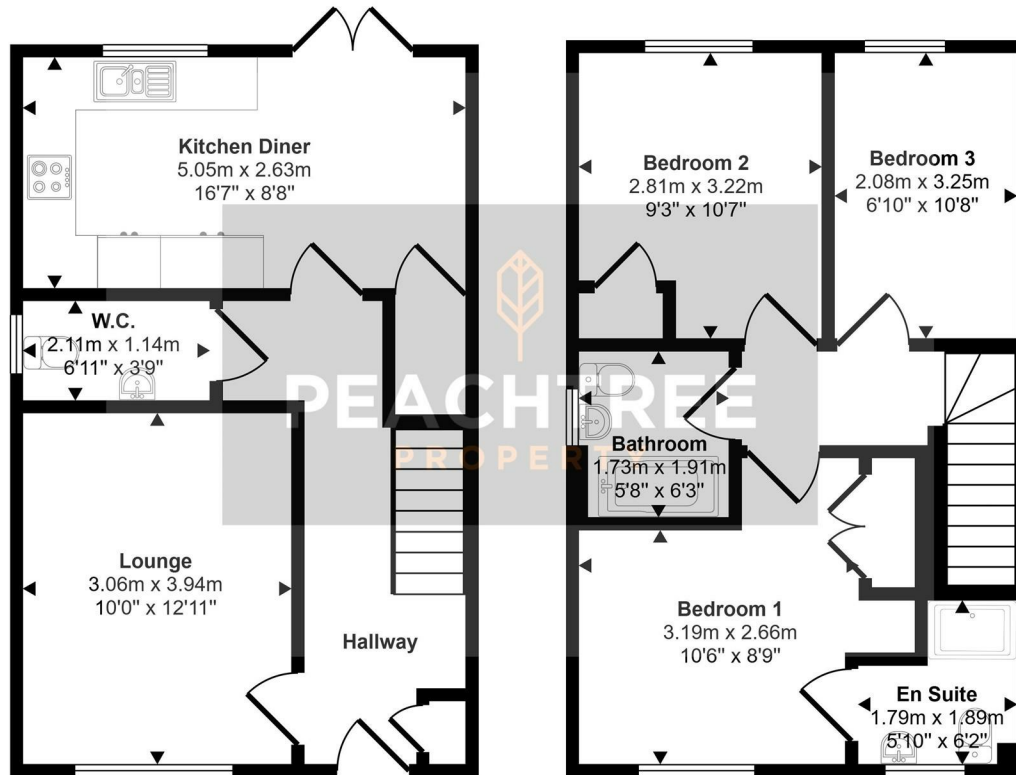
PEACHTREE
PROPERTY



Peachtree Property are thrilled to welcome to the market in well-appointed order, this delightful three bedroom semi detached family home located in the ever popular Dargavel village in Bishopton.

28 Hairst Street Hairst St
 Renfrew
 PA4 8QY
 0141 577 1111
 info@peachtreeproperty.co.uk

Approx Gross Internal Area
 81 sq m / 875 sq ft



Ground Floor
 Approx 41 sq m / 437 sq ft

First Floor
 Approx 41 sq m / 438 sq ft

This floorplan is only for illustrative purposes and is not to scale. Measurements of rooms, doors, windows, and any items are approximate and no responsibility is taken for any error, omission or mis-statement. Icons of items such as bathroom suites are representations only and may not look like the real items. Made with Made Snappy 360.

Energy Efficiency Rating		Current	Potential
Very energy efficient - lower running costs			
(92 plus)	A		
(81-91)	B		
(69-80)	C		
(55-68)	D		
(39-54)	E		
(21-38)	F		
(1-20)	G		
Not energy efficient - higher running costs			
Scotland		EU Directive 2002/91/EC	