



CAMBERWELL NEW ROAD, SE5

£1,200,000

Mid-terraced Georgian home

Four double bedrooms

Two bathrooms

Approx 60 ft garden

Grade II Listed

Chain free

@marshandparsons
marshandparsons.co.uk

MARSH &
PARSONS

ABOUT THE PROPERTY

An exceptional four double bedroom home arranged over four floors, offering a blend of period charm and contemporary luxury. This impressive Grade II Listed mid-terraced home has been fully refurbished throughout to an exacting standard, showcasing beautifully considered interiors and high quality finishes at every turn.

Located on Camberwell New Road, close to Kennington Park, Camberwell Green and Oval Tube stations. Walking distance to shops, local amenities and excellent transport.

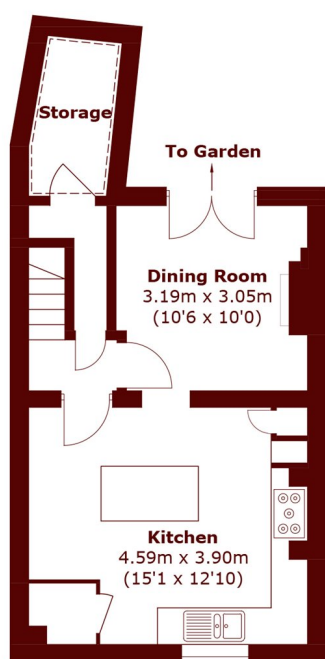




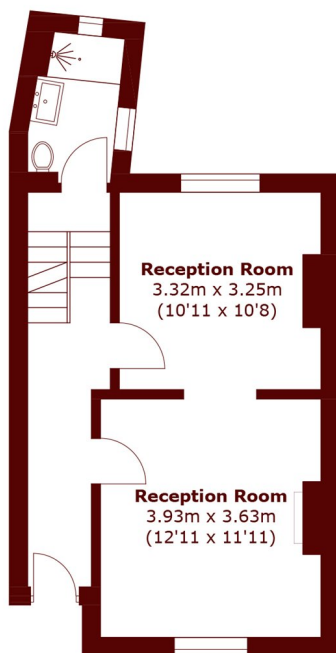




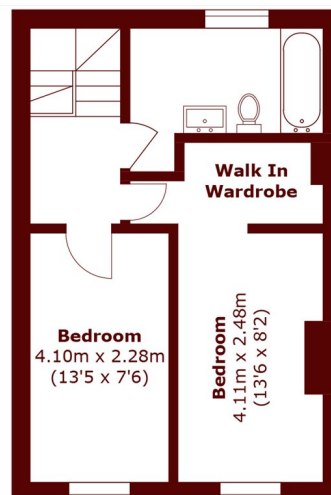
STEP INSIDE CAMBERWELL NEW ROAD



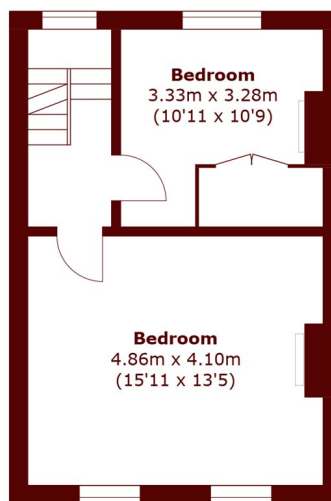
Lower Ground Floor



Ground Floor



Second Floor



First Floor

Total area (approx.): 147.4 sq. m (1,586.6 sq. ft)
(Including Storage)

Kennington
020 7587 1533

Energy Rating: D We aim to make our particulars both accurate and reliable. However, they are not guaranteed; nor do they form part of an offer or contract. If you require clarification on any points then please contact us, especially if you're traveling some distance to view. Please note that appliances and heating systems have not been tested and therefore no warranties can be given as to their good working order

**MARSH &
PARSONS**