

Caldwell Street, SW9

£995,000

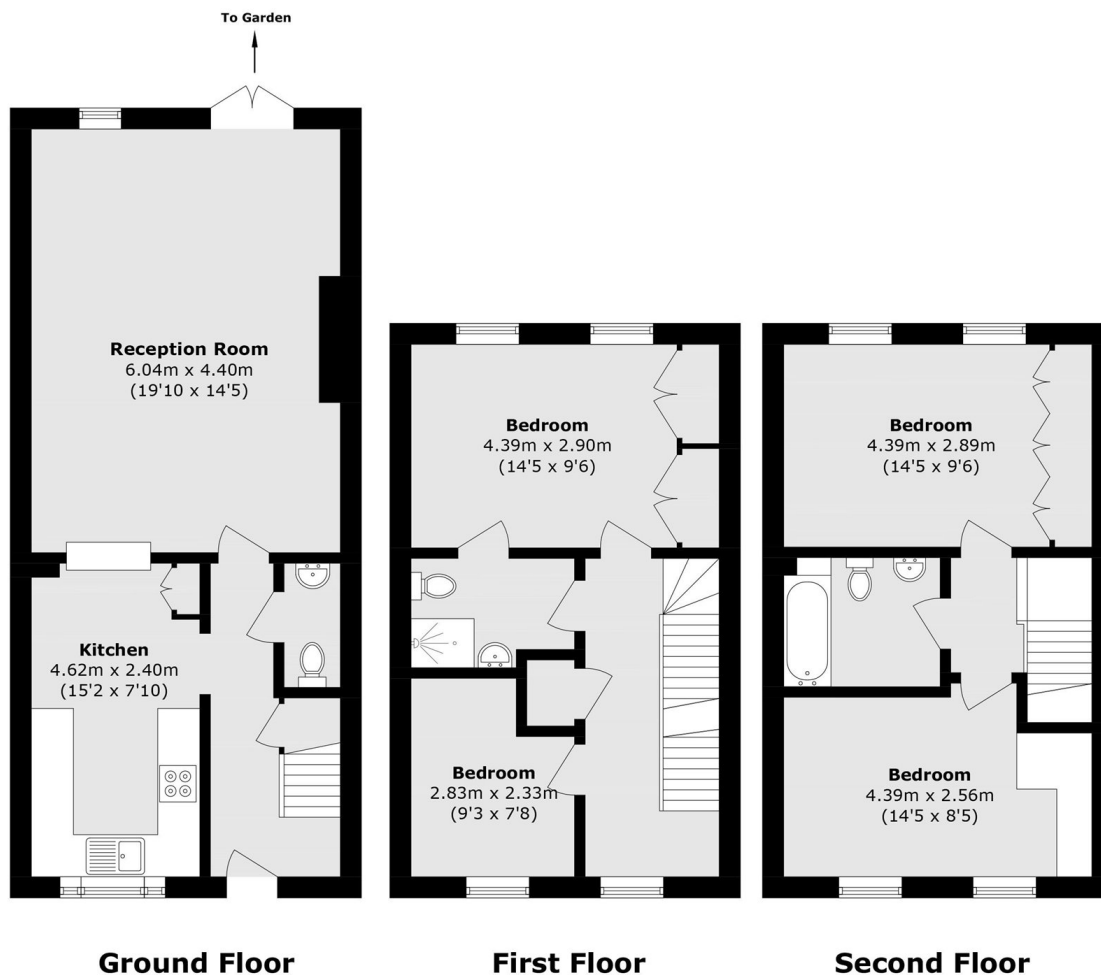
A lovely four bedroom semi-detached Georgian style townhouse home, presented in fantastic condition throughout the entire 1223 sq.ft. Split over three floors, this property offers excellent living space, two full bathrooms as well as a guest bathroom, a gorgeous south- east facing garden, and secure gated allocated parking.

Set back from the road behind a front patio, the property is ideally located between both Stockwell Underground Station (Victoria and Northern lines) and Oval Station. The area has excellent transport links with a number of nearby bus routes, and ideally just a short walk from supermarkets, parks and restaurants.

Features

- Four bedrooms
- Freehold
- South-East facing garden
- Gated allocated parking
- Excellent condition

Caldwell Street, London, SW9



Total area (approx.): 113.7 sq. m (1223.8 sq. ft)