



Connells

Wellhead
Mere Warminster



Property Description

Situated at the end of a no-through-road and incredibly close to some beautiful countryside walks is this cute and cosy two-bedroom cottage comprising ample living space and charming character features throughout. Found just a short walk away from the centre of the bustling market town of Mere, this home presents a fantastic opportunity for those looking for a retreat in the countryside; whether a first-time buyer, second-stepper or even a downsizer. The home itself is immaculately presented, offers sizeable accommodation throughout and an internal viewing comes highly recommended! CALL CONNELLS AND BOOK YOUR TOUR TODAY!

Entrance Hall

The entrance hall has a double glazed window to the front of the property and a dutch front door. It has a radiator, storage cupboards and understairs storage.

Lounge

The lounge has a window to the front of the property. It has a radiator, exposed beams, and an open fireplace with exposed stone.

Kitchen

The kitchen has a window to the rear of the property, a window to the side of the property and French doors to the rear garden. It has both wall and base units, a smoke alarm, a 1 and a quarter bowl sink and drainer with tiled splashback, as well as space for a washing machine, tumble dryer, fridge freezer, an oven, and a slimline dishwasher.

Bathroom

The part tiled bathroom has a double glazed, frosted window to the rear of the property. It has a bath, a shower cubicle, a WC, hand wash basin with a vanity unit, and an extractor fan.



First Floor

Landing

The landing has exposed stone walls and a window to the rear of the property.

Bedroom 1

Bedroom 1 has a velux window to the front of the property and two windows to the rear. It has a radiator, wooden flooring and exposed beams.

Bedroom 2

Bedroom 2 has a velux window to the front of the property. It has a radiator, loft hatch, wooden flooring and exposed beams.

Outside

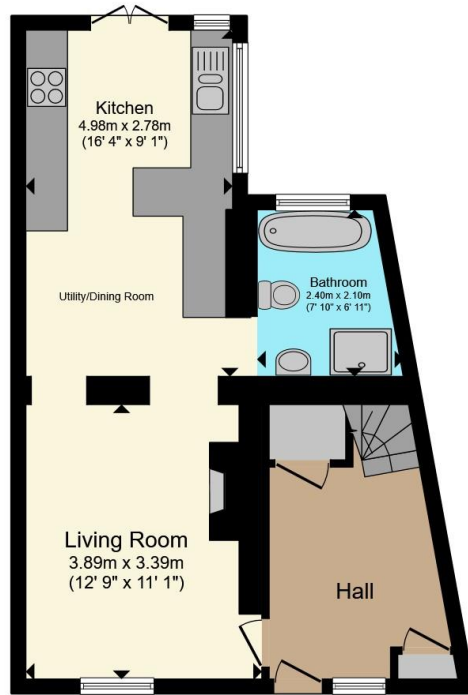
Front Garden

The front garden is laid to lawn with a path to the front door. It has a log shed, a wooden bench and a gravel driveway.

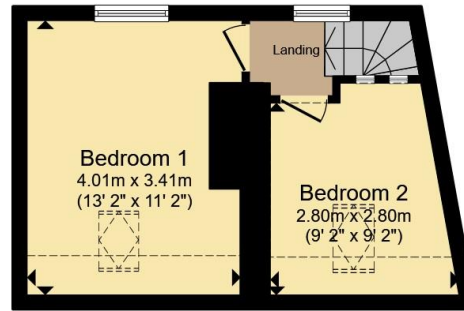
Rear Garden

The rear garden is laid to patio immediately from the kitchen and has steps to the gravel area. It has fence and stone wall borders, an outside tap, a shed and a gate offering rear access.





Ground Floor



First Floor

Total floor area 68.5 m² (737 sq.ft.) approx

This floor plan is for illustrative purposes only. It is not drawn to scale. Any measurements, floor areas (including any total floor area), openings and orientation are approximate. No details are guaranteed, they cannot be relied upon for any purpose and they do not form part of any agreement. No liability is taken for any error, omission or misstatement. A party must rely upon its own inspection(s). Powered by www.propertybox.io



To view this property please contact Connells on

T 01747 821 791
E gillingham@connells.co.uk

4 Clive House High Street
 GILLINGHAM SP8 4QT

EPC Rating: D Council Tax
 Band: B

view this property online connells.co.uk/Property/GIL306462

Tenure: Freehold



1. MONEY LAUNDERING REGULATIONS Intending purchasers will be asked to produce identification documentation at a later stage and we would ask for your co-operation in order that there will be no delay in agreeing the sale. 2. These particulars do not constitute part or all of an offer or contract. 3. The measurements indicated are supplied for guidance only and as such must be considered incorrect. Potential buyers are advised to recheck measurements before committing to any expense. 4. We have not tested any apparatus, equipment, fixtures, fittings or services and it is in the buyers interest to check the working condition of any appliances.

Connells Residential is registered in England and Wales under company number 1489613, Registered Office is Cumbria House, 16-20 Hockliffe Street, Leighton Buzzard, Bedfordshire, LU7 1GN. VAT Registration Number is 500 2481 05.

See all our properties at www.connells.co.uk | www.rightmove.co.uk | www.zoopla.co.uk

Property Ref: GIL306462 - 0004