



## REDCLIFFE SQUARE, SW10

£600,000

Tranquil location  
Two bedrooms  
Courtyard  
Excellent storage  
Chelsea garden square  
Energy rating

@marshandparsons  
marshandparsons.co.uk

MARSH &  
PARSONS



# ABOUT THE PROPERTY

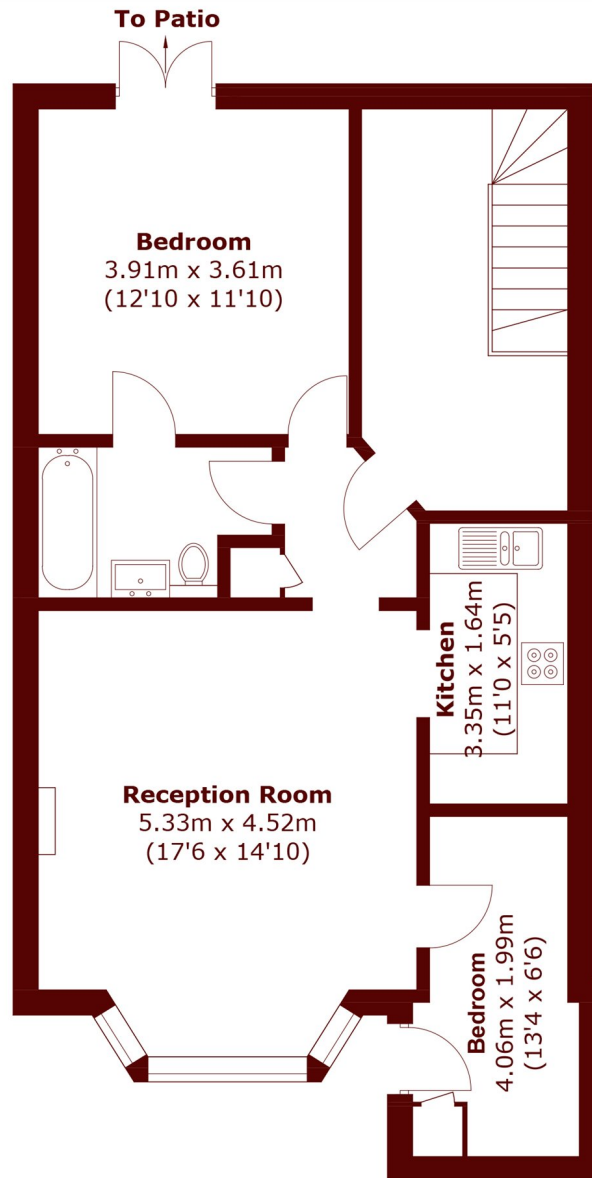
Nestled along this premium garden square in Chelsea, this stunning home comes to market presented in good condition, and benefits from a private courtyard.

The property extends to 646 SqFt and boasts a fantastic reception room with high ceilings and bay frontage, and integrated kitchen. The principle bedroom is a great size, providing access to a decking courtyard via French doors. There's also a quality jack and jill bathroom, smaller second bedroom and excellent storage.

Redcliffe Square is a prestigious address in west Chelsea (SW10) and forms part of the Bolton's Conservation Area.



# STEP INSIDE REDCLIFFE SQUARE



Total area (approx.): 60.1 sq. m (646.9 sq. ft)

**Earls Court**  
020 7244 2210

Energy Rating: We aim to make our particulars both accurate and reliable. However, they are not guaranteed; nor do they form part of an offer or contract. If you require clarification on any points then please contact us, especially if you're traveling some distance to view. Please note that appliances and heating systems have not been tested and therefore no warranties can be given as to their good working order

**MARSH &  
PARSONS**