



New Drum Street, E1 £500,000

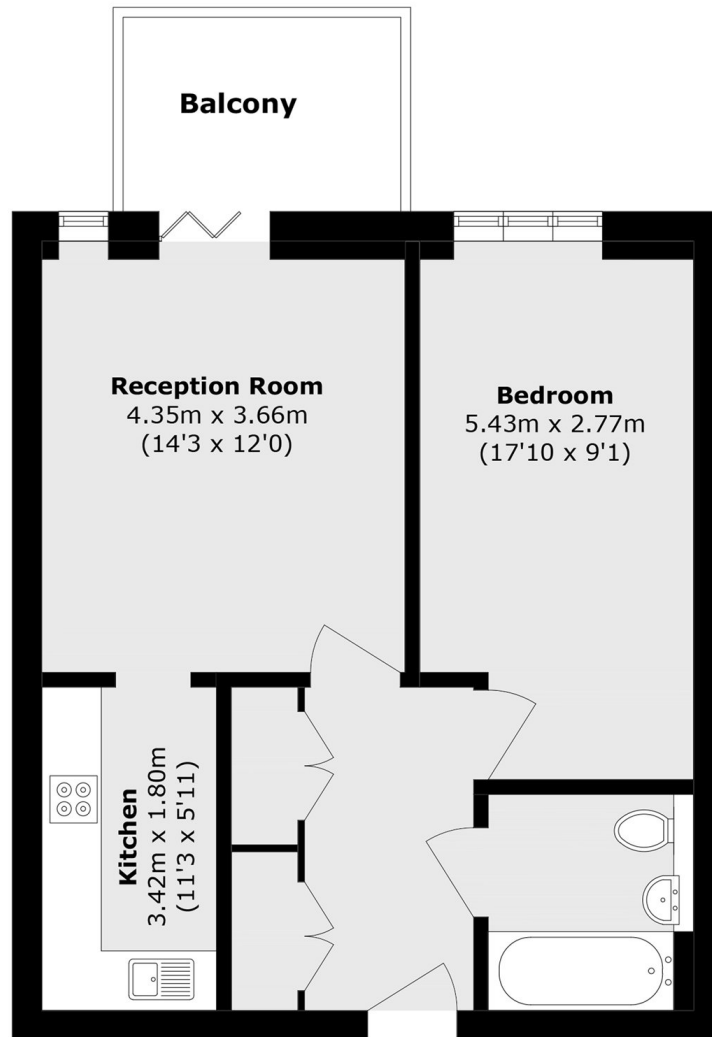
A well-presented one-bedroom apartment located on the 5th floor of Wiverton Tower. The property features a spacious open plan living area with a modern kitchen, leading onto a private south/west facing balcony overlooking a stylish courtyard. There is a generously sized double bedroom with storage. Further features include floor-to-ceiling windows, underfloor heating, and a video entry system. Residents also enjoy access to a 24-hour concierge, gym, rooftop terrace and secure bicycle storage.

Conveniently located within walking distance of the City, Spitalfields Market, Tower Bridge and Shoreditch. The property is well served by transport links, with Aldgate & Aldgate East, Tower Hill and Liverpool Street, as well as the DLR at Tower Gateway and mainline services from Liverpool Street and Fenchurch Street.

Features

- One Double Bedrooms
- Floor To Ceiling Windows
- Secure Bicycle Storage
- Private south/west facing balcony
- Underfloor Heating
- Secure Entry

New Drum Street, London, E1



Total area (approx.): 50.9 sq. m (547.8 sq. ft)

Balcony area (approx.): 5.4 sq. m (58.1 sq. ft)