

Coldharbour Lane, Hildenborough, TN11

Guide Price £1,750,000

5 3 3



Please Quote Ref TH0310 For All Enquiries – GUIDE PRICE £1,750,000 - £1,850,000 - Set in a quiet residential location in the delightful Kent village of Hildenborough, this breath-taking five bedroom detached family home (5,155.9 Sq.Ft) with ample driveway parking, garage, and superb large private garden with gym and spa. Offering beautifully appointed, expansive accommodation with elegant interiors and high quality finish throughout, ideal for modern family life, within the catchment area of sought after grammar schools and close to excellent transport links.

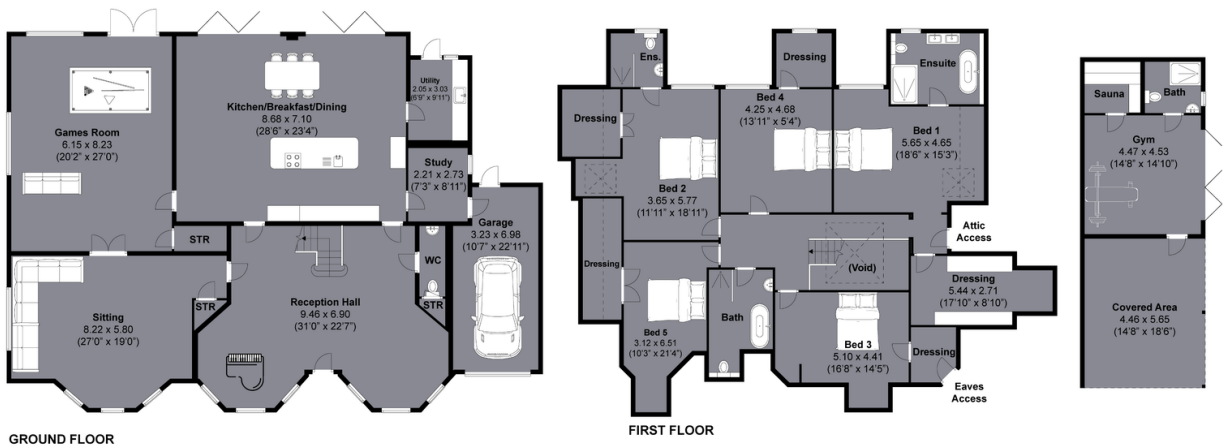


Key Features

- Please Quote Ref TH0310 For All Enquiries
- Stunning Five Bedroom Detached Family Home (5,155.9 Sq.Ft)
- Sought After Hildenborough Village Location
- Elegant Interiors and Luxury Finish
- Two Superb Reception Rooms plus Study
- Breath-Taking Kitchen/Diner/Family Room plus Utility
- Three Contemporary Style Bath/Shower Rooms Wonderful Garden with Gym/Spa Facilities (Two En-Suite) Plus WC
- Ample Off Street Parking and Garage
- Close to Transport Links, Catchment for Grammar Schools and Amenities

Coldharbour Lane, Tonbridge
Approximately 479 sqm (5155.9 sqft)

PAUL BRICE
exp[®] UK
Let's talk...



Disclaimer:
The measurements are approximate and are for illustration purposes only. The dimensions are measured internally and in metres and feet. We do not take any responsibility for errors and/or omissions. If you require further verification please discuss with the buyer/owner of the property.

