



Capitol Way, NW9

£550,000

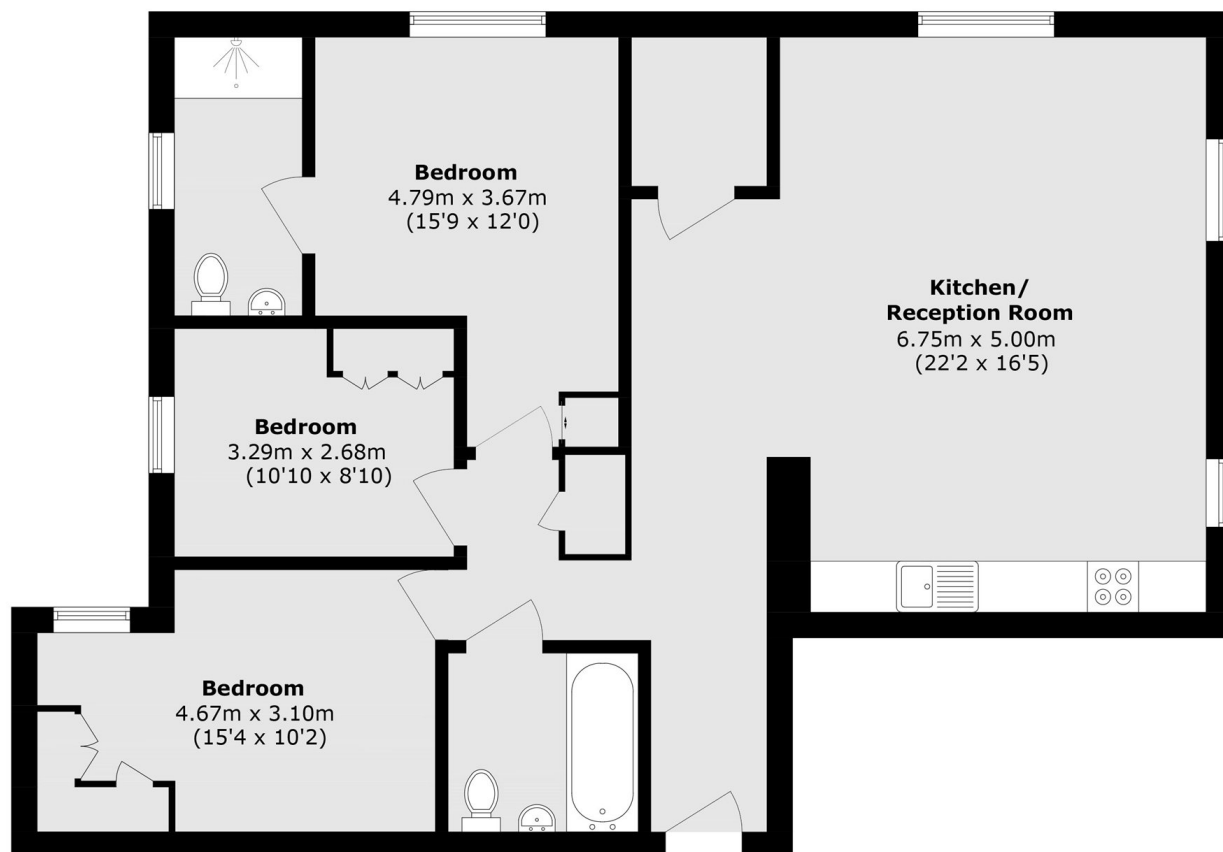
A spacious three bedroom flat located within this modern block. This lovely home is in excellent condition, comes with a secure parking space, a large open plan kitchen and living area as well as stunning views.

Everly House is located close to many local amenities, great transport links including bus routes and Colindale Station (Northern Line) and local gym facilities.

Features

- Three Bedroom
- High Floor
- Stunning Views
- Open Plan Kitchen/Reception
- Secure Private Parking
- Concierge

Capitol Way, London, NW9



Total area (approx.): 103.3 sq. m (1111.9 sq. ft)