



Jamaica Road, SE1

£577 Per week

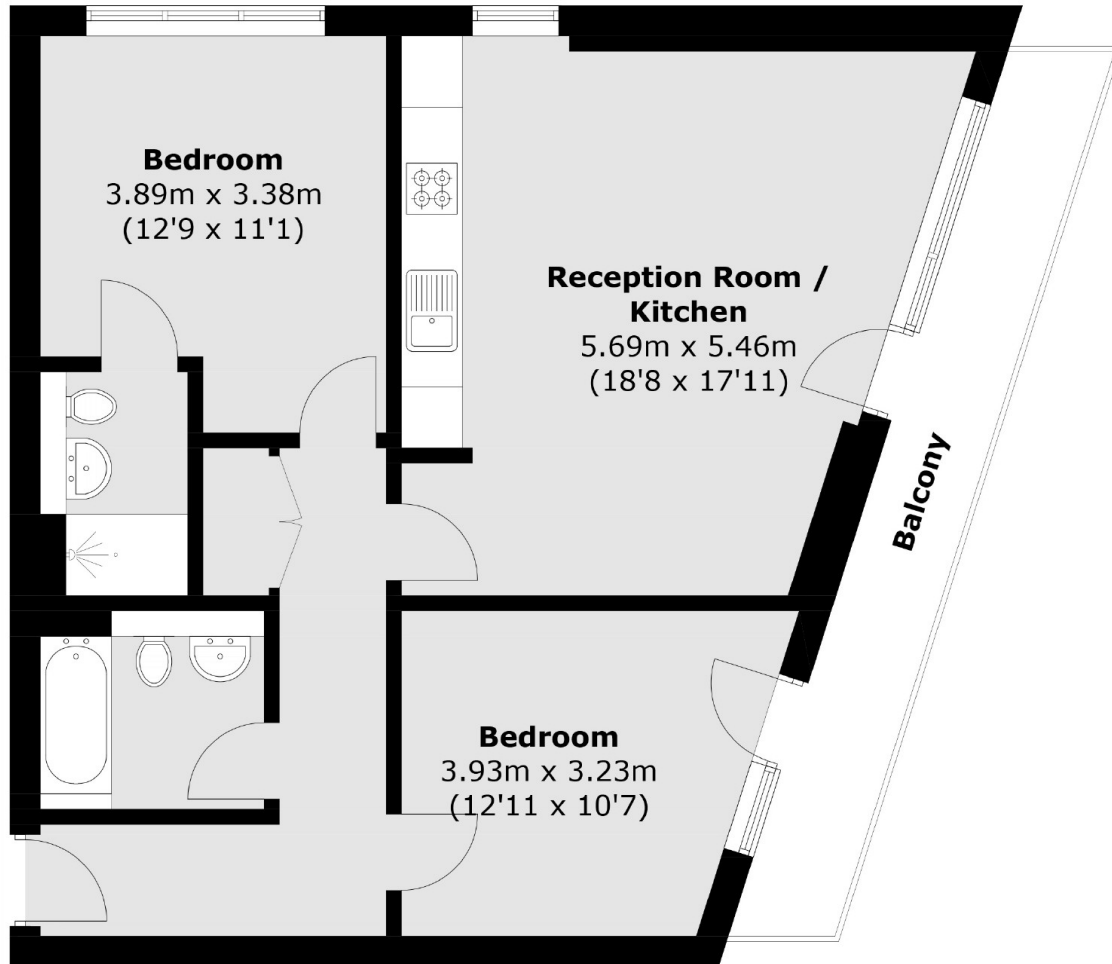
A two double bedroom, two bathroom apartment located in Gedling Court. This bright apartment has an open plan living room and kitchen and is superbly located for the City and South Bank professionals.

Gedling Court is less than 0.4 Miles from the Jubilee Line at Bermondsey Underground which gives easy access to the city and Canary Wharf. Maltby Street Market is close by, as is London Bridge and Shad Thames.

Features

- Two Double Bedrooms
- Two Bathrooms
- Furnished
- View of London Eye
- Communal Balcony
- Bermondsey Underground

Jamaica Road, London, SE1



Total area (approx.): 69.9 sq. m (752.4 sq. ft)
Balcony : 9.1 sq. m (97.9 sq. ft)