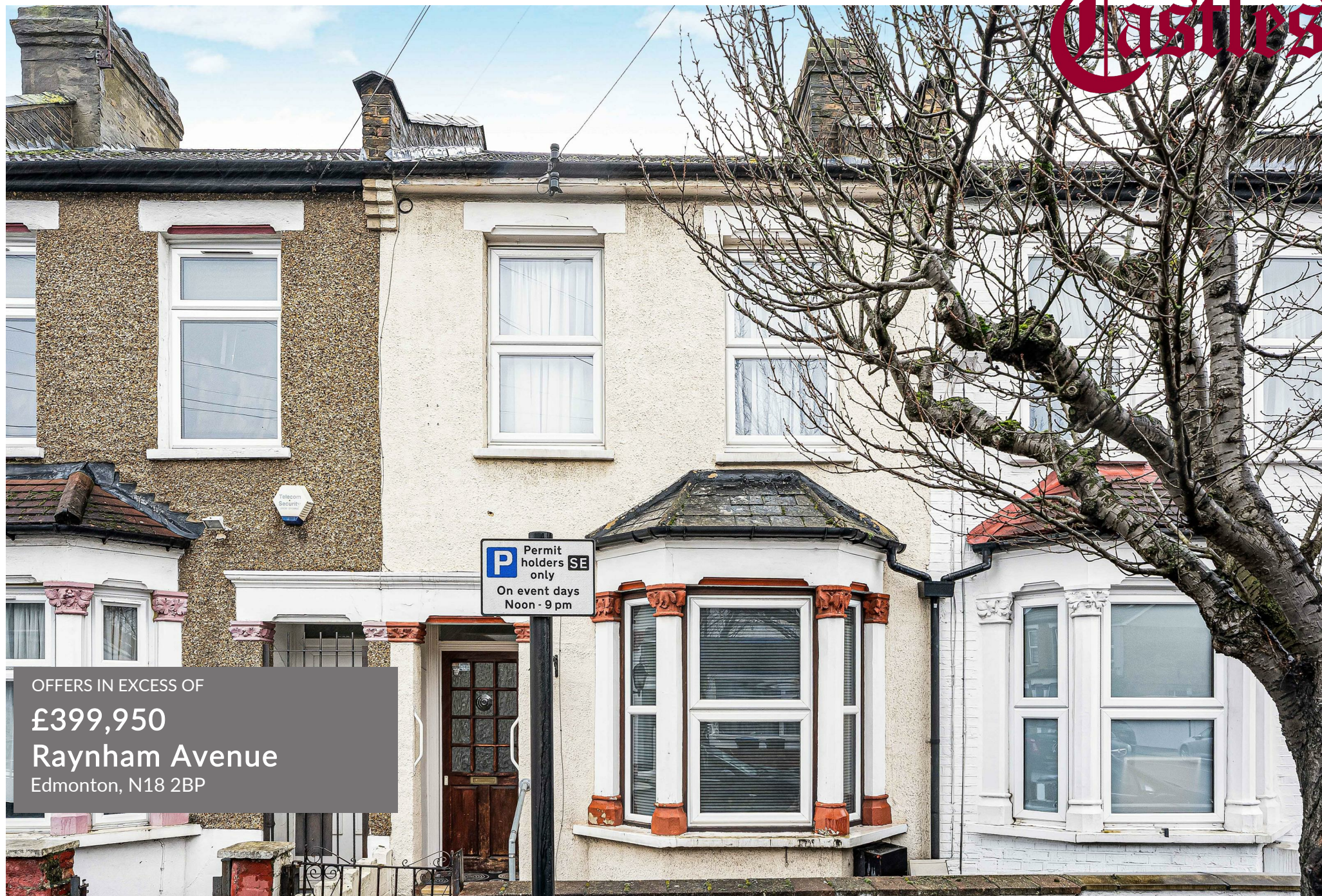


Castles



OFFERS IN EXCESS OF

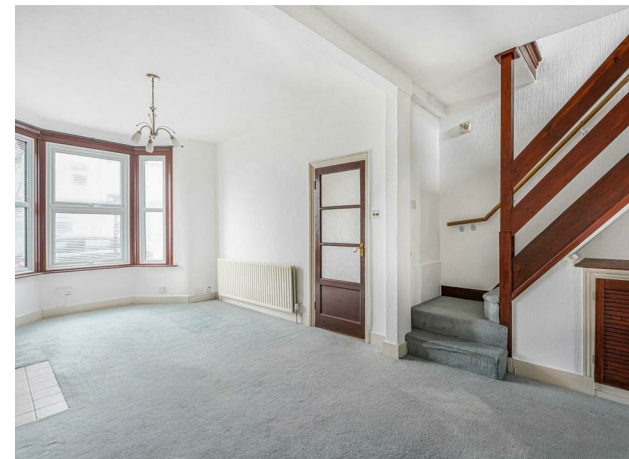
£399,950

Raynham Avenue

Edmonton, N18 2BP

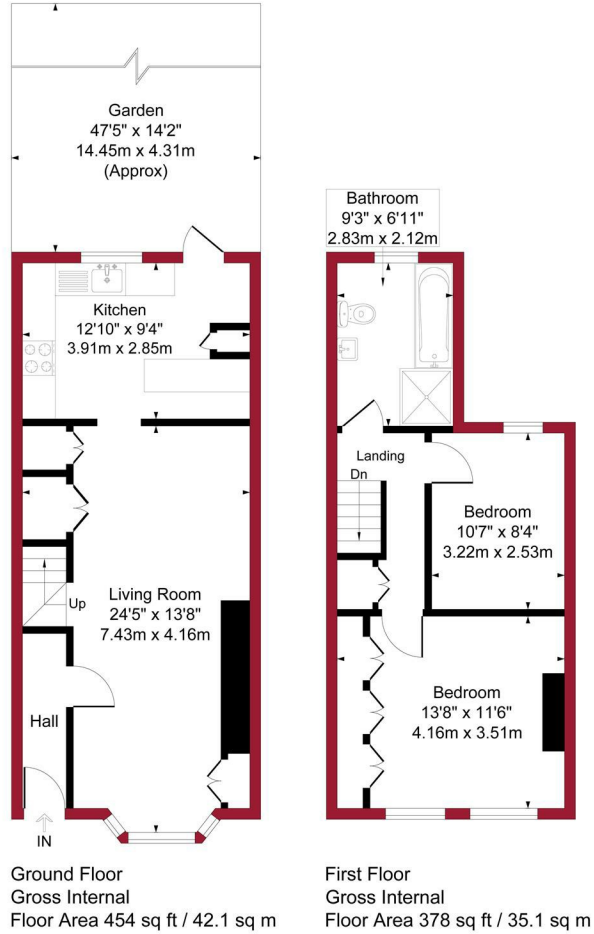
PROPERTY SUMMARY

A two bedroom Victorian Terraced property situated within a 1/4 mile of Fore Street with it's shops and transport links. The property comprises of Reception one and kitchen to ground floor with a further two bedrooms and bathroom. It also has features to include, 47ft rear garden, gas central heating and is offered for sale on a chain free basis.

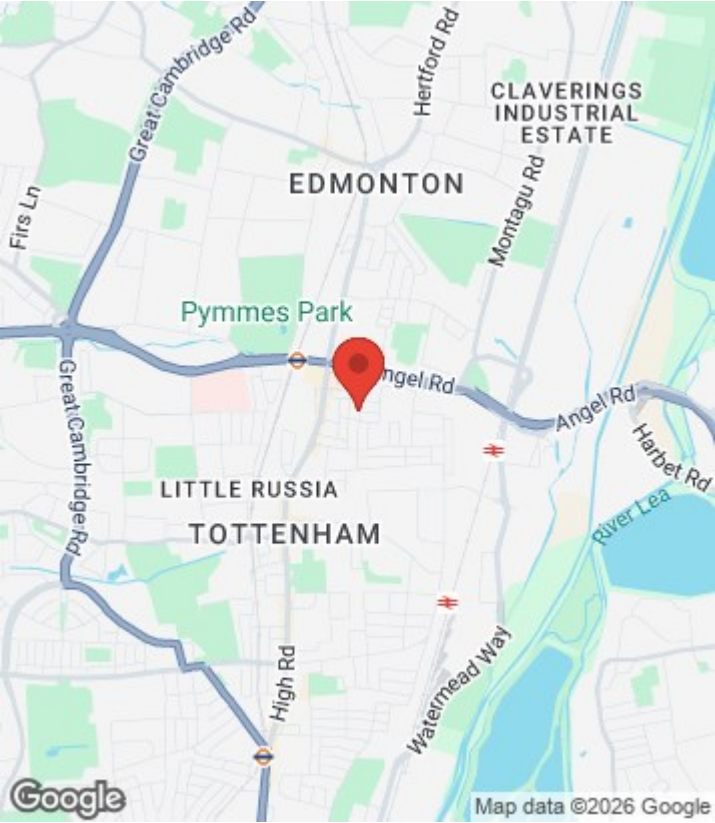
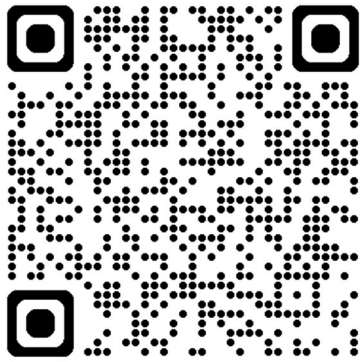




Raynham Avenue, London, N18 Approximate Gross Internal Area = 832 sq ft / 77.2 sq m



For a guide to the area
please scan this code for
more information



House
Freehold
Council:
Council Tax Band: C

Agents Note: Whilst every care has been taken to prepare these particulars, they are for guidance purposes only. All measurements are approximate and are for general guidance purposes only and whilst every care has been taken to ensure their accuracy, they should not be relied upon and potential buyers/tenants are advised to recheck the measurements



OFFICE ADDRESS
438 Hertford Road
Edmonton
London
N9 8AB

OFFICE DETAILS
020 8804 8123
edmonton@castles.london
<https://www.castles.london/>

