

Maitland Avenue, Cambridge, CB4 1TA  
£2,450 Per Calendar Month  
Council Tax Band: C

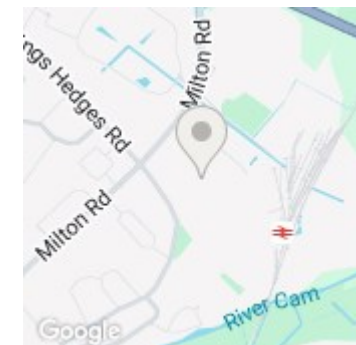
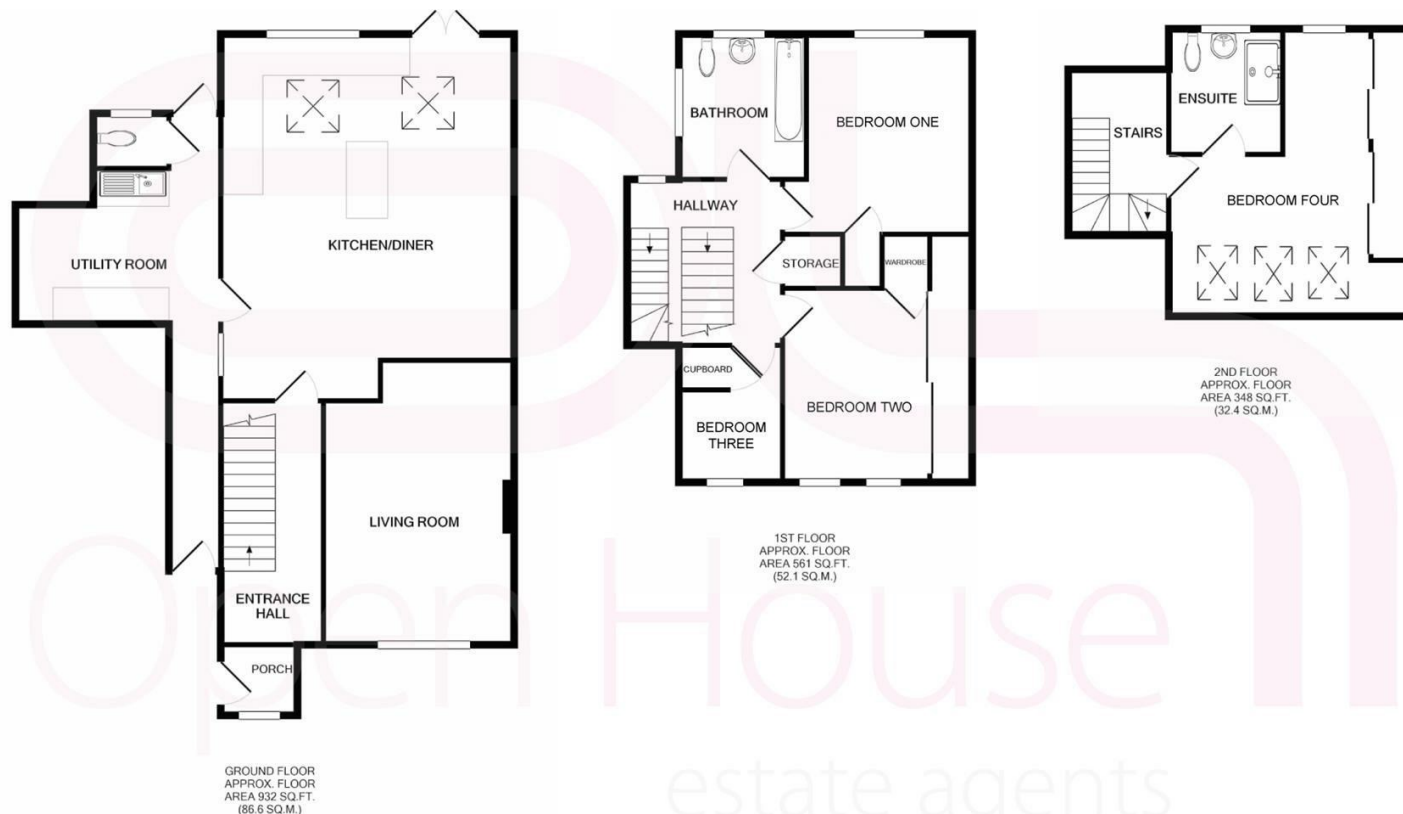


Situated in a highly sought-after residential area, this beautifully presented four-bedroom home seamlessly blends modern comfort with practical family living. The spacious open-plan kitchen and dining area forms the heart of the home, offering a perfect space for cooking, dining, and entertaining, while the inviting living room creates a warm and relaxing environment. Thoughtfully designed throughout, the property offers four generous bedrooms, including an impressive principal suite occupying the entire top floor, complemented by stylish bathrooms and contemporary finishes.

Outside, the property features a well-maintained rear garden with a patio and versatile summerhouse, ideal for leisure or home working, along with a powered workshop providing excellent additional storage space. The block-paved driveway to the front allows ample off-street parking. Combining light-filled interiors, quality fittings, and a layout designed for modern lifestyles, this exceptional home provides a superb setting for family life and entertaining alike. Viewing is highly recommended to appreciate the space and style on offer.



Open House Cambridgeshire



Approx. Gross Internal Floor Area 1841 sq. ft / 171.1 sq.m.

Illustration for identification purposes only, measurements are approximate, not to scale.

Energy Efficiency Rating		Current	Potential
Very energy efficient - lower running costs			
(92 plus) <b>A</b>			
(81-91) <b>B</b>			
(69-80) <b>C</b>		76	83
(55-68) <b>D</b>			
(39-54) <b>E</b>			
(21-38) <b>F</b>			
(1-20) <b>G</b>			
Not energy efficient - higher running costs			
<b>England &amp; Wales</b>		EU Directive 2002/91/EC	