



89798798 Selborne Road, Walthamstow, E17 7GD
£2,160 Per month





89798798 Selborne Road, Walthamstow, E17 7GD

£2,160 Per month

Brand New Apartment | Panoramic City Views | Private Garden.

As a resident, you'll enjoy all inclusive access to premium amenities such as a 24-hour gym, yoga studio, games room, private work from home suites, and communal co-working areas. For added peace of mind, a 24/7 on-site concierge team is always available to assist with your day to day needs.

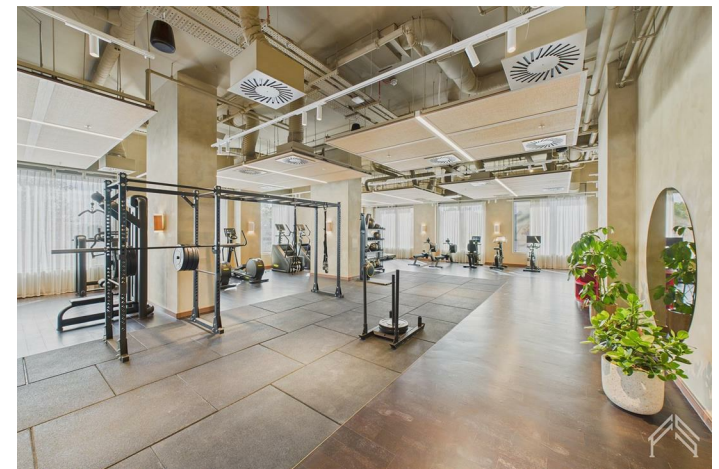
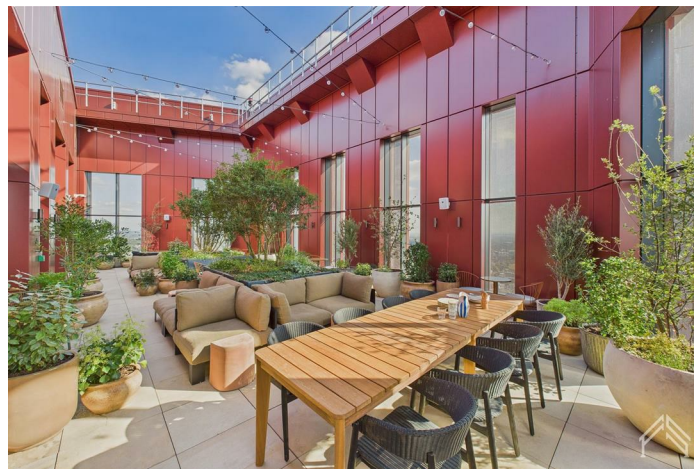
Step into luxury with this brand new, larger than average apartment - expertly designed to combine style, space and convenience. Perfect for professionals and couples alike, this contemporary home offers high-spec interiors, thoughtful layouts and stunning panoramic views across London.

Inside, you'll discover a sleek open-plan kitchen equipped with integrated appliances, including a dishwasher and washer/dryer, along with a dedicated workspace – perfect for working from home. High-speed WiFi is included, keeping you effortlessly connected at all times.

Description



Situation



Furnished
Council Tax Band: B
Available:

Floor Plans



Area Map



Energy Performance Graph



These particulars, whilst believed to be accurate are set out as a general outline only for guidance and do not constitute any part of an offer or contract. Intending purchasers should not rely on them as statements of representation of fact, but must satisfy themselves by inspection or otherwise as to their accuracy. No person in this firm's employment has the authority to make or give any representation or warranty in respect of the property.