

High Street

Approximate Gross Internal Area
Total = 58.3 sq m / 628 sq ft

This plan is for layout guidance only. Not drawn to scale unless stated. Windows and door openings are approximate. Whilst every care is taken in the preparation of this plan, please check all dimensions, shapes and compass bearings before making any decisions reliant upon them.

powered by:
THE360IMAGE
www.the360image.co.uk



Directions

Contact

125 Hoe Street
London
E17 4RX

E: lettings@hcolondon.com

T: 02085 210 755

hcolondon.com



0 Bed
Commercial
located in



106D High Street

London
E17 7 JY

£18,000 (From) Per Annum



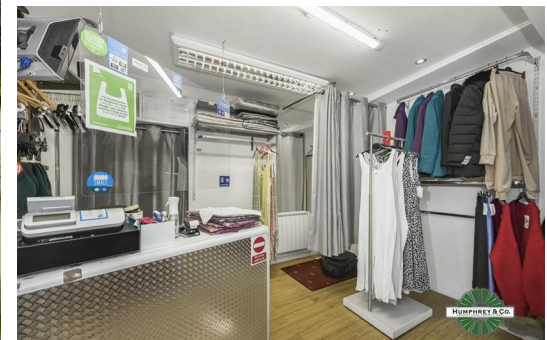
- OFFERS OVER £18,000 PER ANNUM -

Nestled in the vibrant heart of Walthamstow, this commercial property on High Street offers an exceptional opportunity for businesses seeking a prime location. With its strong daily footfall, this space is perfectly positioned to attract a diverse clientele, making it an ideal choice for a variety of enterprises.

The property falls under Class E, which allows for a wide range of uses, providing flexibility to adapt the space to suit your business needs. Whether you envision a trendy café, a boutique shop, or an office, the possibilities are abundant.

The competitive rent level further enhances the appeal, ensuring that you can maintain a healthy budget while establishing your presence in this bustling area.

Additionally, the property offers flexible occupation options, with the choice of a 5-year lease or a 12-month licence with a renewal option. This adaptability is perfect for those who may wish to test the waters before committing long-term.



| Energy Efficiency Rating | | Current | Potential |
|---|--|-------------------------|-----------|
| Very energy efficient - lower running costs | | | |
| (92 plus) A | | | |
| (81-91) B | | | |
| (69-80) C | | | |
| (55-68) D | | | |
| (39-54) E | | | |
| (21-38) F | | | |
| (1-20) G | | | |
| Not energy efficient - higher running costs | | | |
| England & Wales | | EU Directive 2002/91/EC | |

