



Salmon Street, NW9

£1,250,000

A stunning fully extended six bedroom family home situated on one of NW9's premier roads. This superb property is finished to the highest of specs and features three bedrooms, a study, a utility room, a guest WC and a summer house with a toilet, a bar and a sauna.

Salmon Street is a highly desirable street within easy access of both Kingsbury and Wembley Park underground stations as well as Fryent Country Park.

Features

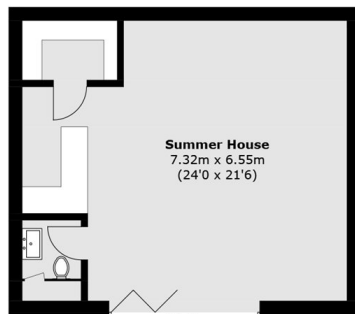
- Extended Family Home
- Six Bedrooms
- Three Bathrooms
- Two Additional WCs
- Games Room With Sauna
- High Spec



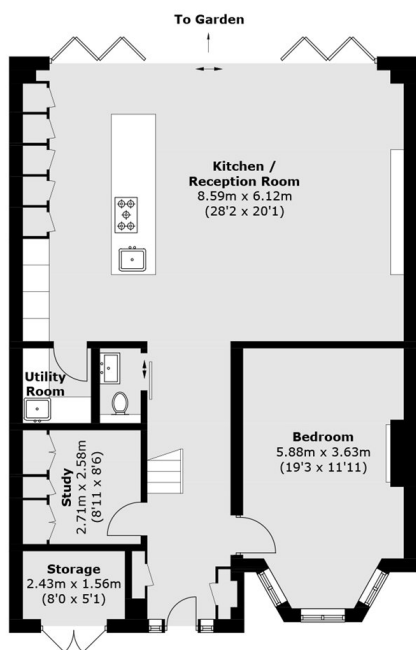
Salmon Street, NW9



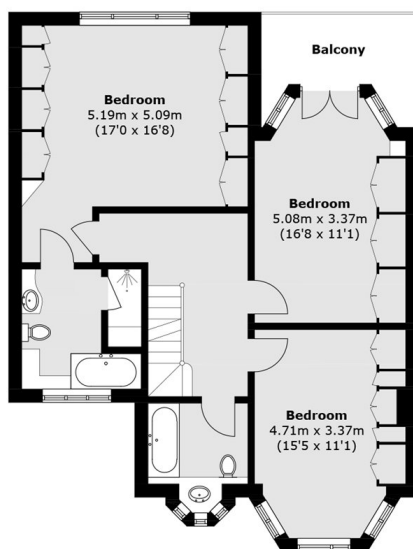
Salmon Street, London, NW9



(Not Shown In Actual
Location / Orientation)



Ground Floor



First Floor



Second Floor

Approx Internal Area: 225.3 sq. m (2,425.1 sq. ft)
(Excluding Eaves / Eaves Storage)
Summer House & Storage : 51.0 sq. m (549.0 sq. ft)
Balcony : 6.6 sq. m (71.0 sq. ft)