



HOMES BY VICTORIA
ESTATE AGENCY

Perryfields Road, Bromsgrove, B61 8SY

Offers Over £330,000

3 2 1



****A Beautifully Extended Three Bedroom Semi-Detached Family Home in a Sought-After Bromsgrove Location****

Situated within the ever-popular area of Bromsgrove, this lovely and thoughtfully extended three bedroom semi-detached family home has been lovingly upgraded throughout and offers generous, versatile living space perfectly suited to modern family life.

homesbyvictoria.co.uk

victoria@homesbyvictoria | 07833 136521

FOR M HOMES MIDLANDS LIMITED trading as Homes By Victoria Company Number: 13688840 VAT no: 470190115



HOMES BY VICTORIA
ESTATE AGENCY



HOMES BY VICTORIA

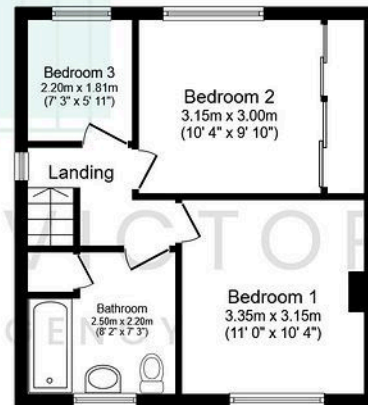
ESTATE AGENCY

Key Features

- SOUGHT AFTER LOCATION OF BROMSGROVE
- THREE BEDROOMS
- DOWNSTAIRS WC AND BOOT ROOM
- MODERN FAMILY BATHROOM
- BLOCK PAVED DRIVEWAY
- TRADITIONAL FAMILY HOME
- EXTENDED KITCHEN FAMILY ROOM WITH LOG BURNER
- SEPERATE LOUNGE WITH LOG BURNER
- GENEROUS AND WELL ESTABLISHED REAR GARDEN
- EPC RATING C AND COUNCIL TAX BAND C



Ground Floor
Floor area 63.4 sq.m. (683 sq.ft.)



First Floor
Floor area 37.4 sq.m. (403 sq.ft.)

Total floor area: 100.9 sq.m. (1,086 sq.ft.)

This floor plan is for illustrative purposes only. It is not drawn to scale. Any measurements, floor areas (including any total floor area), openings and orientations are approximate. No details are guaranteed, they cannot be relied upon for any purpose and do not form any part of any agreement. No liability is taken for any error, omission or misstatement. A party must rely upon its own inspection(s).