



Bolton Head Farmhouse | Gosforth | Seascale | CA20 1EW

Guide Price £599,000



david britton
ESTATES



Key Features

- Handsome part 17th-century stone farmhouse full of original character
- Spectacular views down the Wasdale Valley
- Four generous double bedrooms, spacious sitting room, lounge and farmhouse kitchen
- Approx. one acre of private gardens, yard and grounds
- Traditional stone outbuilding currently used as a home office
- Minutes from Gosforth village — bakery, pubs, primary school
- Five miles to Seascale for rail links and coast access
- Close to South Lakes and Solway Coast
- A rare opportunity to own a genuine piece of Lakeland history
- Potential to extend subject to planning permission

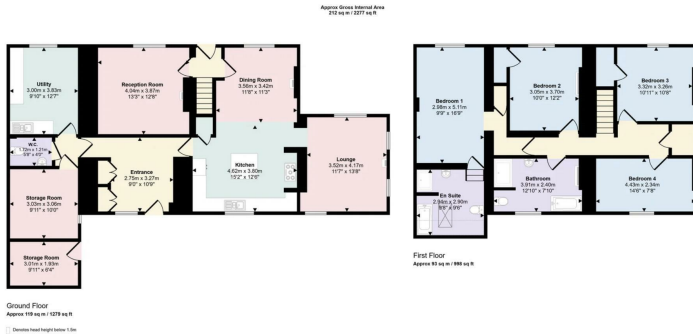
Summary

A beautifully characterful stone farmhouse, dating back to 1692, sitting within approximately one acre of private grounds on the edge of Gosforth — one of the western Lake District's most loved villages. With four generous bedrooms, bags of period charm and some of the finest fell views in Cumbria, Bolton Head Farmhouse is a remarkable family home in an extraordinary location. Available as part of the wider Bolton Head Farm estate or as a standalone purchase.





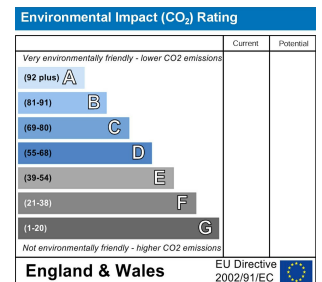
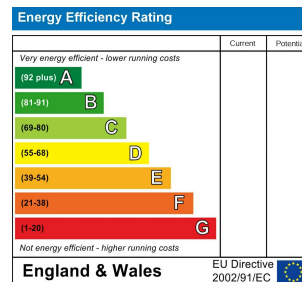
Floor plans



COUNCIL TAX BAND - CopelandD

DISCLAIMER

These particulars, whilst believed to be accurate are set out as a general guideline and do not constitute any part of an offer or contract. Intending Purchasers should not rely on them as statements of representation of fact but must satisfy themselves by inspection or otherwise as to their accuracy. The services, systems, and appliances shown may not have been tested and has no guarantee as to their operability or efficiency can be given. All floor plans are created as a guide to the lay out of the property and should not be considered as a true depiction of any property and constitutes no part of a legal contract.



Unit 3 Mason Court Gillan Way, Penrith 40 Business Park

Penrith

Cumbria

CA11 9GR

01768881111

Sales@brittonestates.co.uk

www.brittonestates.co.uk