



## Lorrimore Square, Kennington, SE17

Guide Price £500,000 - £550,000

3 1 1



PLEASE SELECT 1 FOR GEORGE ON CALLING – GUIDE PRICE £500,000 - £550,000 - Just a short distance from Kennington, Oval and Elephant & Castle stations, this well presented three bedroom raised ground floor apartment (885 Sq.Ft) with large private terrace, set within a popular purpose built development. The property offers bright and spacious accommodation with modern interiors throughout - the perfect blend of comfort and convenience for a modern lifestyle in this fantastic residential location. Features include a wonderful reception room opening onto the terrace, separate eat-in kitchen/diner, family bathroom plus useful guest WC, inbuilt storage, gas central heating, double glazing, and secure entry.

**Jonathan Woods**  
jonathanwoods.exp.uk.com  
jw@jonathanwoodsrealestate.com  
07498 214 463



## Key Features

- PLEASE SELECT 1 FOR GEORGE ON CALLING • WELL PRESENTED 3 BED TOP FLOOR APARTMENT (885 SQ.FT)
- FANTASTIC KENNINGTON/OVAL LOCATION • MODERN INTERIORS
- SPACIOUS RECEPTION ROOM • LARGE TERRACE
- MODERN BATHROOM AND SEPARATE WC • GAS CENTRAL HEATING AND DOUBLE GLAZING
- CLOSE TO KENNINGTON/OVAL/ELEPHANT & CASTLE STATIONS • EASY ACCESS SHOPS AND AMENITIES

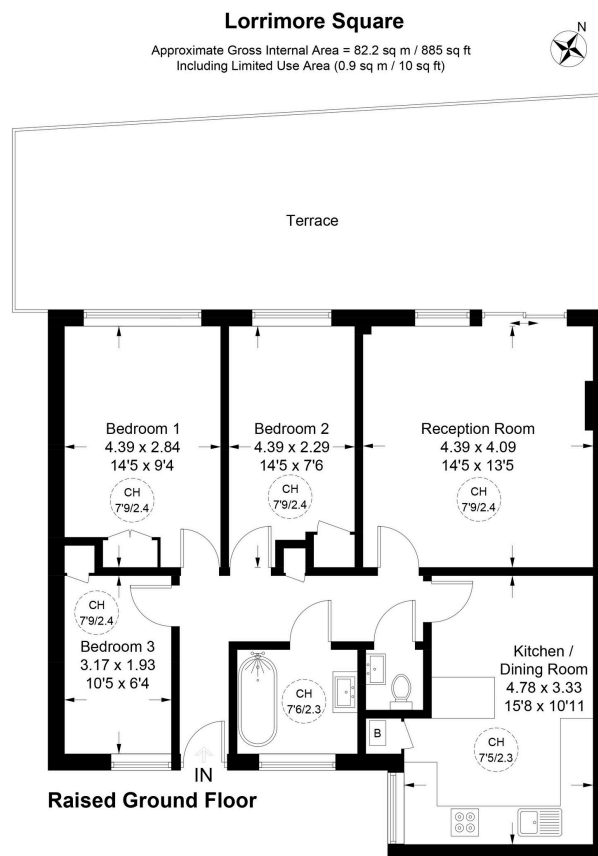


Illustration for identification purposes only, not for valuation purposes, measurements are approximate, not to scale. IPMS2