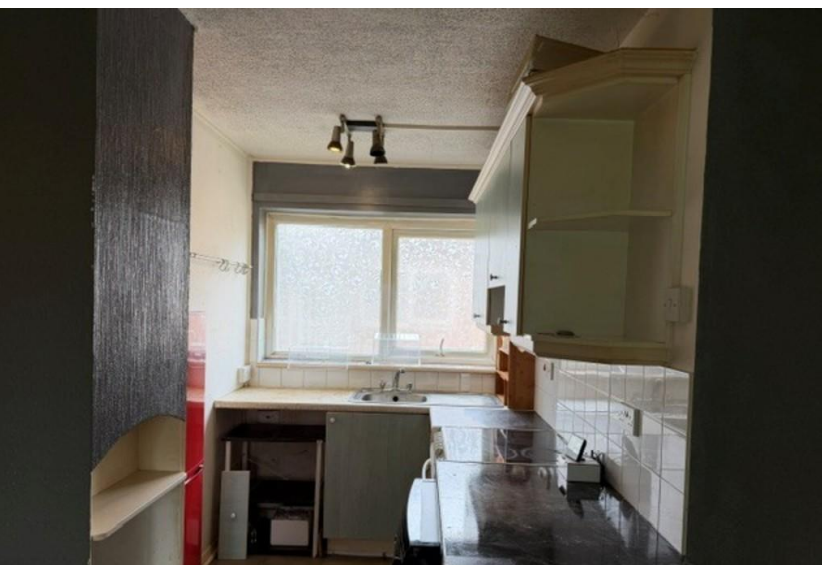


EMMA HATTON LTD



- Top floor Apartment
- Spacious Lounge
- Kitchen
- Two bedrooms

21F Lawngreen Avenue, Manchester, M21 8FH

Asking Price Of £210,000

Purpose built 2 double bedroomed top floor Apartment in need of modernisation in the heart of Chorlton Green, this well planned accommodation briefly comprises spacious open plan lounge/ kitchen, Two bedrooms, bathroom with shower, UPVC double glazed windows, underfloor heating, Quiet private tree lined cul-de-sac road, well established communal gardens, Close to Nature Reserve and Beech Road with its independent trendy bars/restaurants, Metrolink giving access to City Centre and Media City. No Vendor Chain. Ideal for first time buyer/investor.