



*jordan fishwick*

**DIDSBURY**  
Ladysmith Road



# Ladysmith Road, Didsbury, M20 6HL

Guide Price £595,000



## The Property

\*\*\* INVESTMENT PROPERTY \*\*\*

AN IMPRESSIVE END TERRACE PROPERTY HAVING BEEN SKILFULLY CONVERTED TO FORM FOUR FLATS (1 x 2 Bed, 2 X 1 Bed & 1 x Studio), LOCATED WITHIN A SHORT STROLL OF THE METROLINK & DIDSBURY VILLAGE. 2019 sq ft overall (including the unconverted basement).

The ground floor entrance hall gives access to a one bedroom flat with living room, fitted kitchen, double bedroom and shower room, along with the studio with living/bedroom area, kitchenette and shower room. There is also direct access from this flat to the rear courtyard. At first floor level is another one bedroom duplex flat with living/kitchen area, shower room and stairs to the second floor bedroom, along with the two bedroom duplex flat with living/dining area, fitted kitchen and double bedrooms, with stairs leading to an additional bedroom and shower room at second floor level.

There is an enclosed courtyard at the rear which also gives access to the basement.

## Directions

M20 6HL



- Investment opportunity
- Four self contained units
- 1 x 2 bed duplex flat
- 2 x 1 bed flats
- 1 x studio flat
- Unconverted basement
- Enclosed rear courtyard
- Great location
- Close to Metrolink & Didsbury Village

Postcode - M20 6HL

EPC Rating -

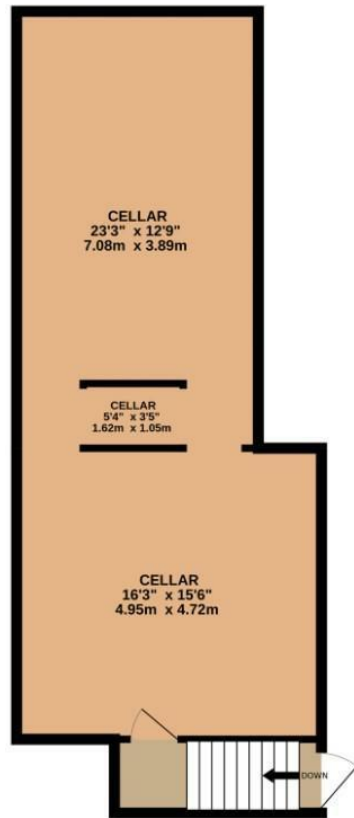
Floor Area - 2019.00 sq ft

Local Authority - Manchester City Council

Council Tax - A



BASEMENT  
592 sq.ft. (55.0 sq.m.) approx.



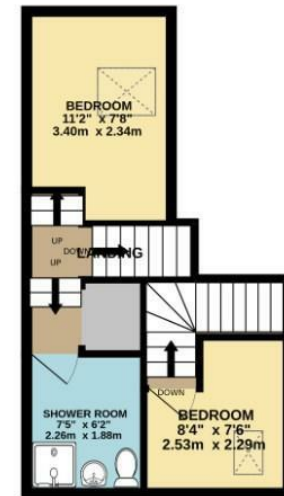
GROUND FLOOR  
593 sq.ft. (55.1 sq.m.) approx.



1ST FLOOR  
562 sq.ft. (52.2 sq.m.) approx.



2ND FLOOR  
271 sq.ft. (25.2 sq.m.) approx.



TOTAL FLOOR AREA : 2019 sq.ft. (187.5 sq.m.) approx.  
Measurements are approximate. Not to scale. Illustrative purposes only  
Made with Metropix ©2026



These particulars are believed to be accurate but they are not guaranteed and do not form a contract. Neither Jordan Fishwick nor the vendor or lessor accept any responsibility in respect of these particulars, which are not intended to be statements or representations of fact and any intending purchaser or lessee must satisfy himself by inspection or otherwise as to the correctness of each of the statements contained in these particulars. Any floorplans on this brochure are for illustrative purposes only and are not necessarily to scale.

Offices also at: Wilmslow, Macclesfield, Hale, Sale, Chorlton, Glossop, Manchester & Salford

757-759 Wilmslow Road, Didsbury Village, Manchester

0161 445 4480

didsbury@jordanfishwick.co.uk  
www.jordanfishwick.co.uk