



DANIEL ARCHER

exp[®] UK

@ daniel.archer@exp.uk.com

danielarcher.exp.uk.com

📞 07792 947 756

The Grange, Wimbledon Village, SW19

£775,000

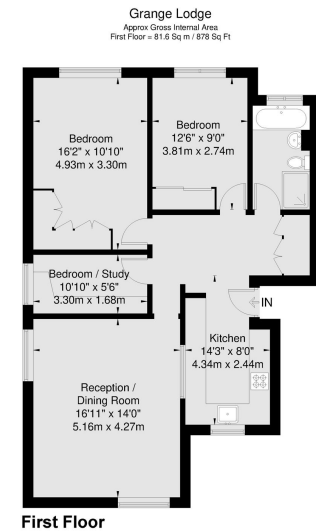
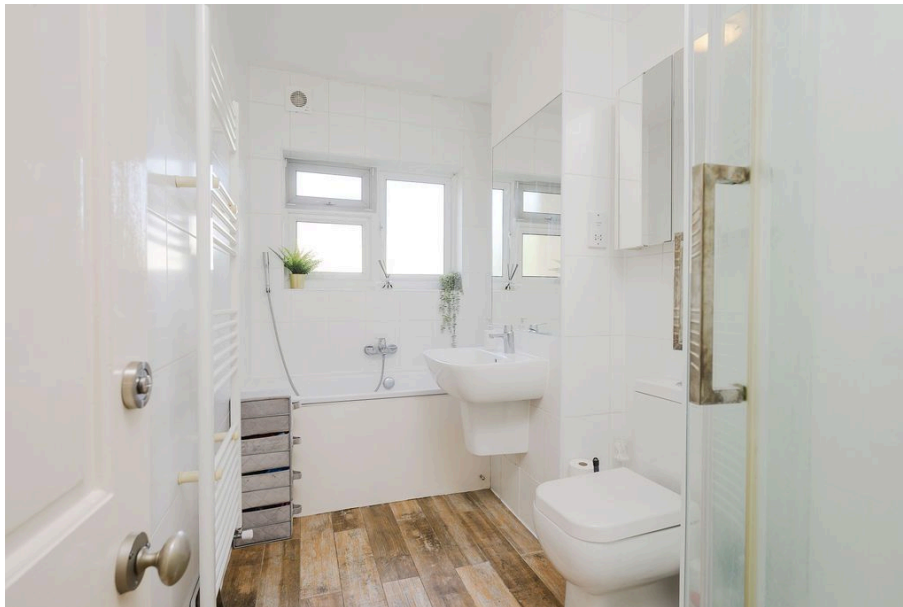
🛏 3 🚗 1 🚗 2

- Well Presented Three Bedroom First Floor Flat (878 Sq.Ft)
- Modern Interiors and Neutral Finish
- Separate Well Equipped Kitchen
- Allocated Parking and Communal Gardens
- Beautiful green spaces of Wimbledon Common a short stroll away
- Prime Wimbledon Village Location
- Bright and Spacious Dual Aspect Reception Room
- Modern Bathroom
- Moments from Fashionable Wimbledon Village Amenities
- Property Ref: DA 0587 Close to Fantastic Transport Links from Wimbledon Town Centre



Share of Freehold apartment in a prime Wimbledon Village location with allocated parking, this well presented three bedroom first floor apartment (878 Sq.Ft) has access to beautifully maintained communal gardens, set within this stunning location just moments from Wimbledon Common and Wimbledon Village a well run purpose built block with reasonable outgoings. Offering bright and spacious accommodation with neutral finish and modern interiors throughout - the perfect blend of comfort and convenience, within a short distance of Wimbledon Village, Wimbledon town centre, transport links, shops and amenities. VIDEO TOUR AVAILABLE Property Ref: DA 0587





DANIEL ARCHER
 020 7089 8888
 Viewmedia © 2024
 Viewmedia.co.uk
 While every effort has been made to ensure the accuracy of this floor plan, measurements of doors, windows and rooms are approximate and no responsibility is taken for any error or omission. This illustration is for identification purposes only. Not drawn to scale, unless stated. Dimensions shown are to the nearest 2" and are to the points indicated by the arrow heads.

