



## George Beard Road, SE8 £600,000

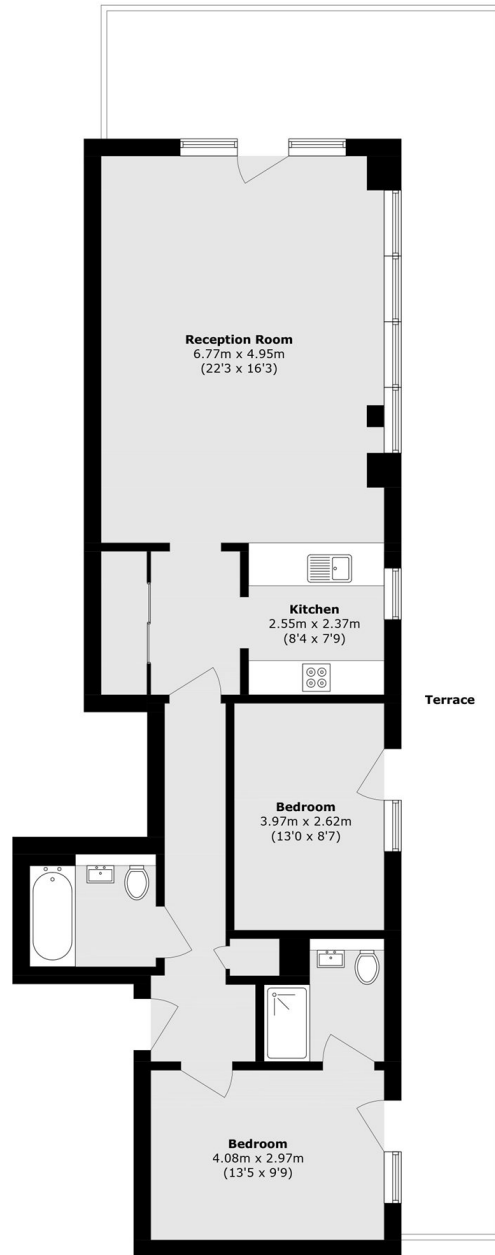
Offering incredible views of the London skyline and with a huge private roof terrace, this two double bedroom flat has two bathrooms, a large open plan kitchen living space, ample storage, secure allocated parking and concierge facilities.

Located within a mile of Canada Water station and Surrey Quays station, Aragon Tower offers an easy commute to Canary Wharf and The City. Thames Clipper river boat is close by, providing services to Central London and Greenwich.

### Features

- Two Double Bedrooms
- Two Bathrooms
- Incredible Views
- Private Roof Terrace
- Concierge Facilities
- Secure Allocated Parking

# George Beard Road, London, SE8



Total area (approx.): 89.1 sq. m (959.1 sq. ft)  
Terrace area (approx.): 47.2 sq. m (508.1 sq. ft)