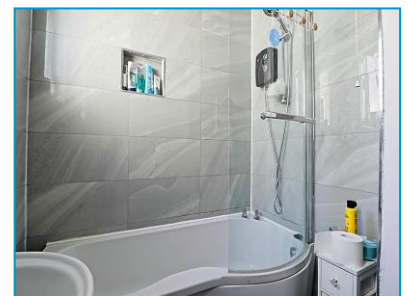
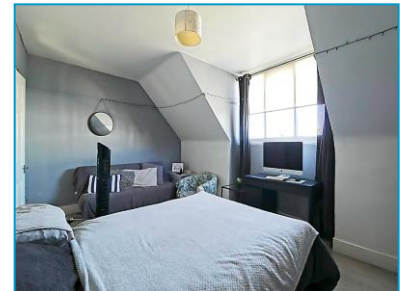




**MORGAN
BROOKES**
ESTATE AGENTS
HELPING YOU GROW



Hamlet Court Road, Westcliff-On-Sea



Morgan Brookes believe - This generously sized three-bedroom maisonette is perfectly located in the heart of Westcliff, just a short walk to Westcliff Mainline Station is ideal for commuters and families. Split over two floors, the property offers two reception rooms, ample storage, and off-street parking for two vehicles. Nestled in a vibrant area with local shops, cafes, and the seafront nearby, this home delivers space, convenience, and lifestyle.

Key Features

- Available Now
- Three Bedroom Maisonette.
- Split Over Two Floors.
- Two Reception Rooms.
- Ample Storage.
- Off-Street Parking For Two Vehicles.
- Ideal Location & Walking Distance To Westcliff Mainline Station.
- Household Income: £34,400.00+ Per Annum Required For Affordability

**Monthly Rental Of
£1,250**

T 01268 755 626 E info@morganbrookes.co.uk A 105 High St | Benfleet | SS7 1ND



morganbrookes.co.uk

