



Castles

GUIDE PRICE

£325,000 - £350,000 Leasehold

Cromie Close

London, N13 4BF

PROPERTY SUMMARY

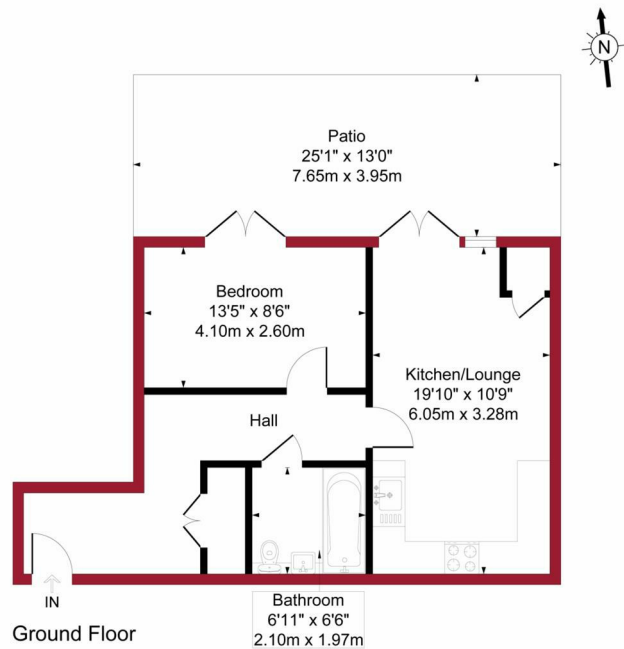
Guide price £325,000 - £350,000. A larger than average one bedroom ground floor garden apartment. Situated within this vibrant modern development and located in the heart of Palmers Green within walking distance of Palmers Green British rail station serving central London and The City via Moorgate. Local amenities and bus routes can be easily found on Green Lanes and Aldermans Hill. Further comprising open-plan kitchen/reception which leads out to your own private garden terrace, modern bathroom, ample storage throughout and with the added benefit of allocated parking. The property also benefits from being extremely energy efficient and awarded an NHBC certificate.





11 Cromie Close, London, N13

Approximate Gross Internal Area = 525 sq ft / 48.7 sq m

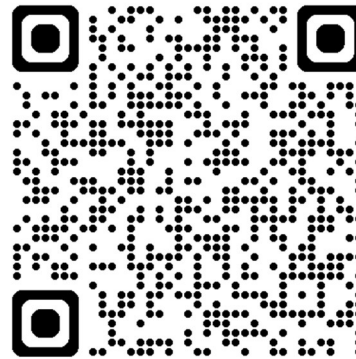


PINK PLAN

Floor plan produced in accordance with RICS Property Measurement 2nd Edition. Although Pink Plan Ltd ensures the highest level of accuracy, measurements of doors, windows and rooms are approximate and no responsibility is taken for error, omission or misstatement. These plans are for representation purposes only and no guarantee is given on the total square footage of the property within this plan. The figure icon is for initial guidance only and should not be relied on as a basis of valuation.

Castles

For a guide to the area
please scan this code for
more information



Flat

Leasehold

Council Tax Band: C

Lease Remaining: 114 Years

Service Charge: £2,633.00 P/A

Ground Rent: £200 P/A

Agents Note: Whilst every care has been taken to prepare these particulars, they are for guidance purposes only. All measurements are approximate and are for general guidance purposes only and whilst every care has been taken to ensure their accuracy, they should not be relied upon and potential buyers/tenants are advised to recheck the measurements

Castles

OFFICE ADDRESS

78 Green Lanes
Palmers Green
London
N13 6BE

OFFICE DETAILS

020 8888 6081

www.castles.london

