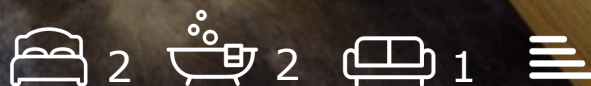




Old Shoe Factory Portland Square

, Bristol, BS2 8RR

Asking price £350,000



Old Shoe Factory Portland Square



Description

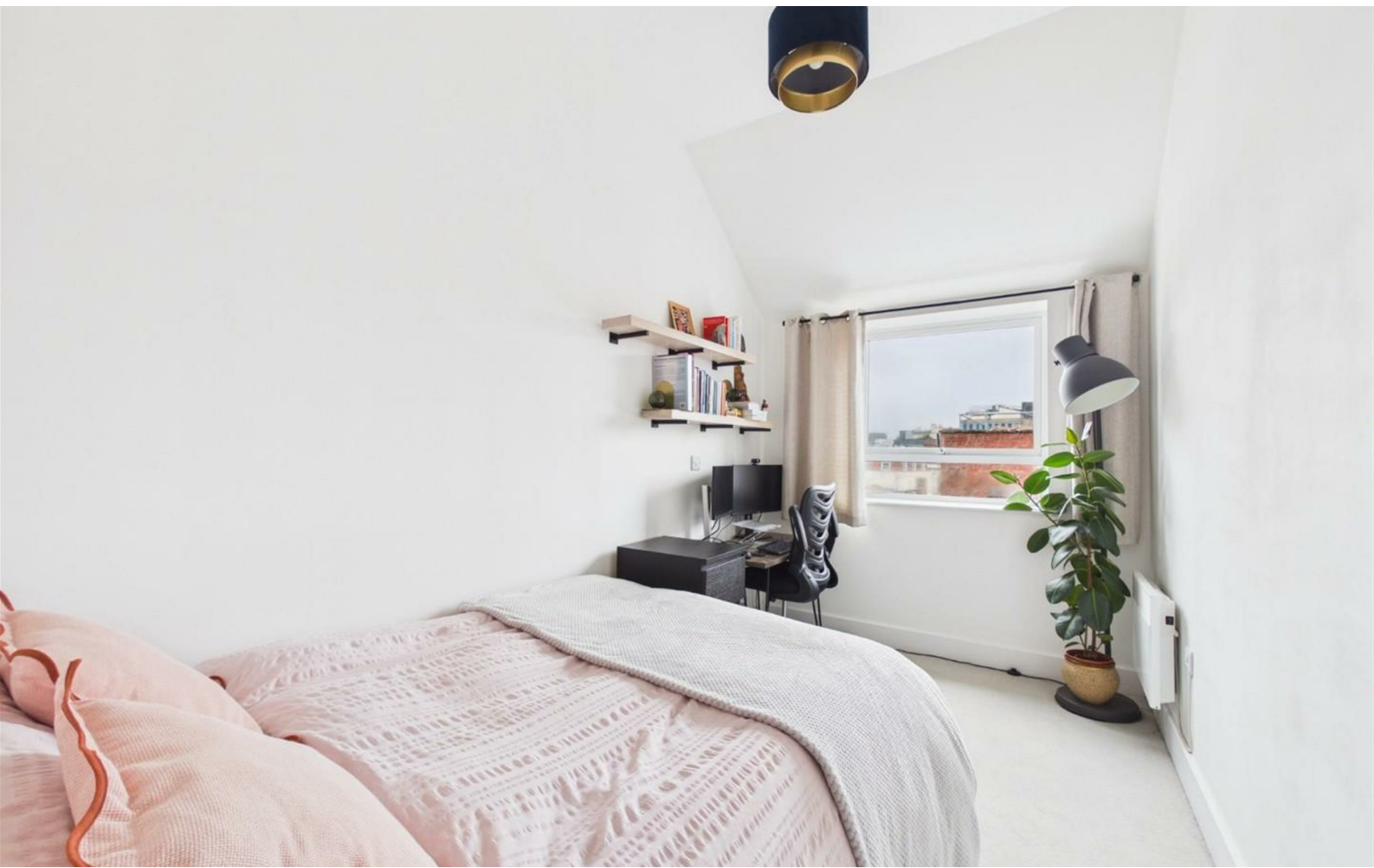
Located on Portland Square in St Pauls, this stylish light filled top floor flat offers a unique blend of modern living and historical character. Converted in 2016 this Grade II listed property has been thoughtfully renovated to provide a stylish and comfortable home.

Accessed via a communal entrance the property can be accessed via a lift or stairs rising to the top floor. The spacious hallway has access to the utility room and space for coats. The open plan living room includes a stylish kitchen creating a sociable space with plenty of light. There are two double bedrooms, both with modern ensuite shower rooms.

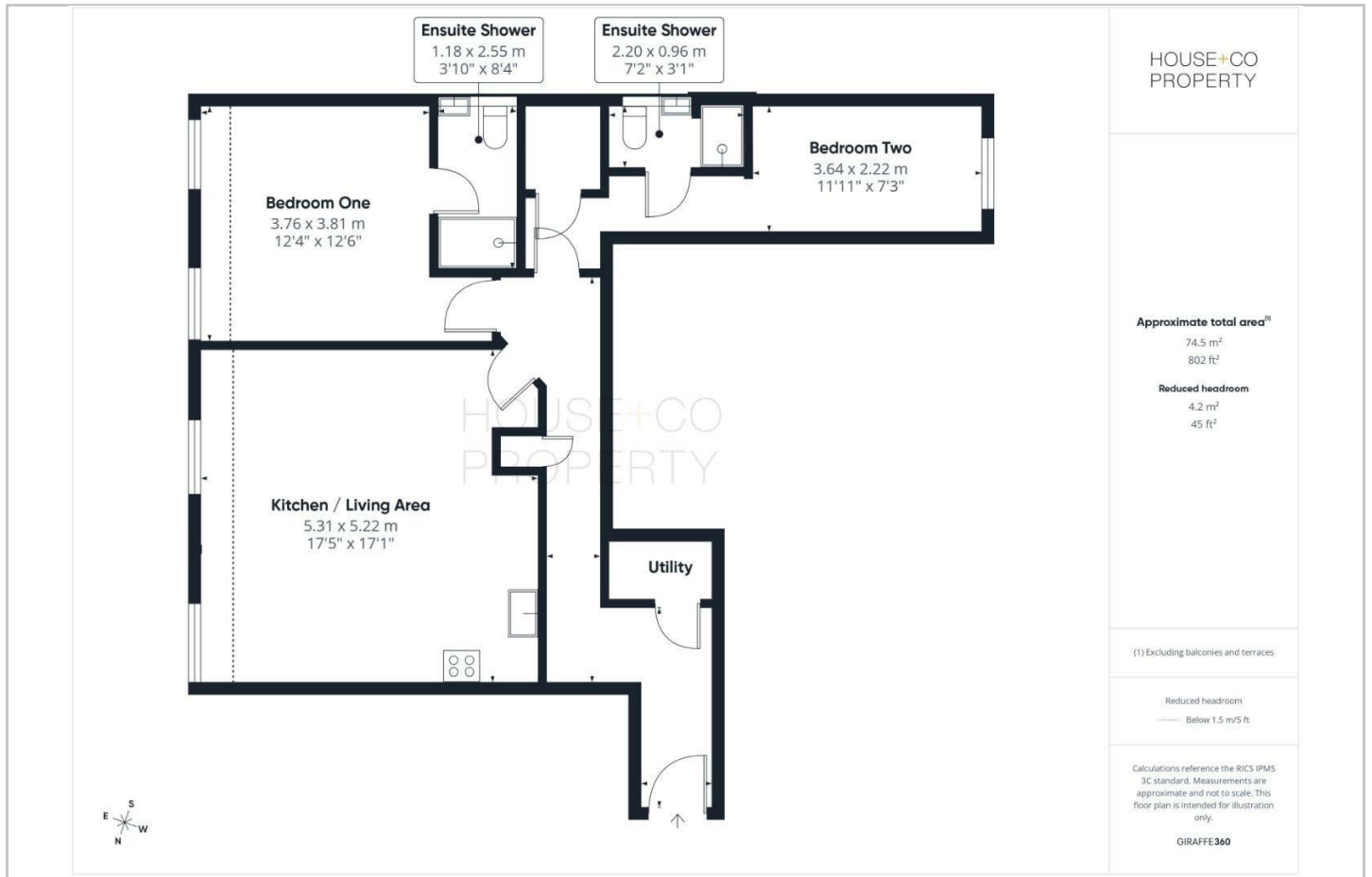
Perfectly situated in a vibrant area with easy access to local amenities and transport links. If you are seeking a stylish and well-appointed property with parking in Bristol, this flat in Portland Square is certainly worth considering.

- TOP FLOOR APARTMENT
- TWO ENSUITE BATHROOMS
- OPEN PLAN LIVING
- CENTRAL LOCATION
- BIKE STORE
- TWO DOUBLE BEDROOMS
- ALLOCATED PARKING
- STYLISH KITCHEN
- CLOSE TO CABOT CIRCUS

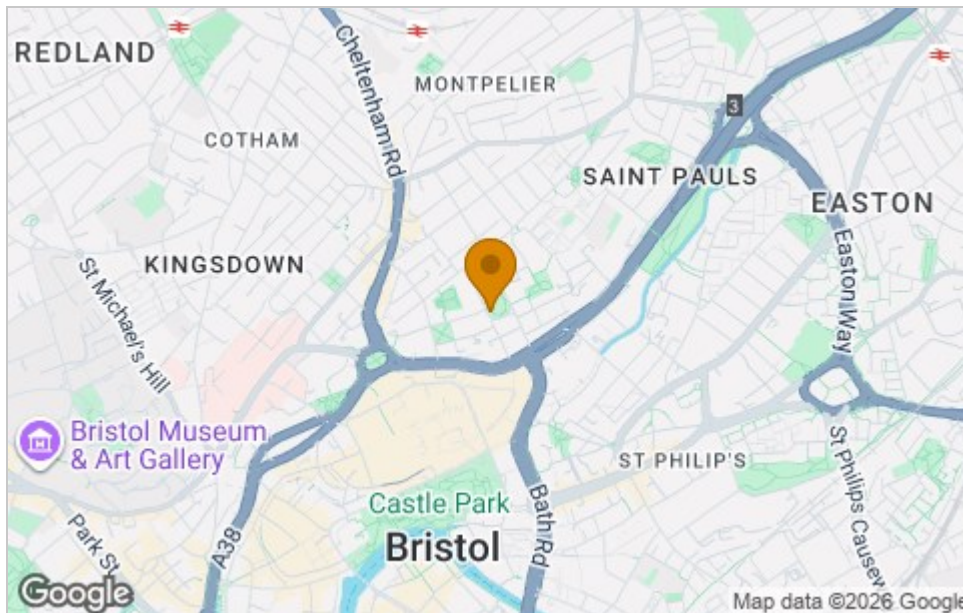




Floor Plan



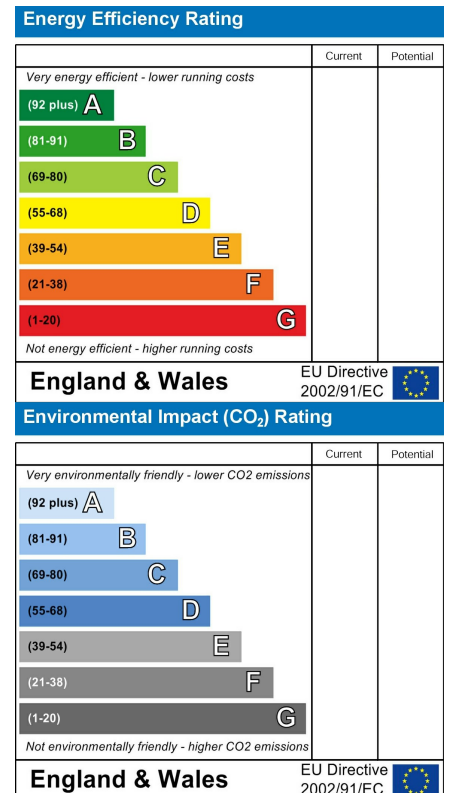
Area Map



Viewing

Please contact our House + Co Property (Sales) Office on 0117 907 0020 if you wish to arrange a viewing appointment for this property or require further information.

Energy Efficiency Graph



These particulars, whilst believed to be accurate are set out as a general outline only for guidance and do not constitute any part of an offer or contract. Intending purchasers should not rely on them as statements of representation of fact, but must satisfy themselves by inspection or otherwise as to their accuracy. No person in this firm's employment has the authority to make or give any representation or warranty in respect of the property.