



PALACE GARDENS TERRACE, W8

£305,000

A spacious studio apartment in Kensington benefiting from a porter and lift.

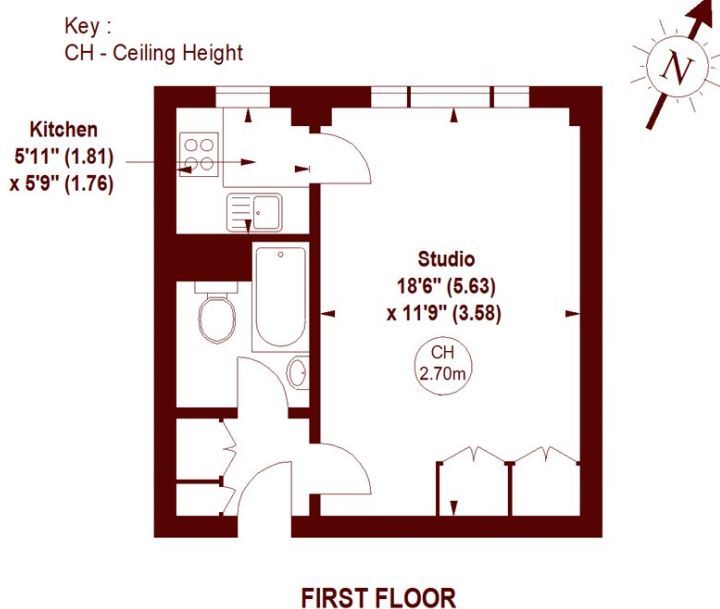
Large Studio Flat
Separate Kitchen
Wooden Floors

Portered Building
Moments From Notting Hill Gate
Share of Freehold

STEP INSIDE PALACE GARDENS TERRACE

Broadwalk Court, W8

APPROX. GROSS INTERNAL FLOOR AREA 341 SQFT / 31.68 SQM



The floor plan is not to scale and measurements and areas shown are approximate and therefore should be used for illustrative purposes only. The plan has been prepared in accordance with the RICS code of Measuring Practice and whilst we have confidence in the information produced, it must not be relied on. If there is any aspect of particular importance, you should carry out or commission your own inspection of the property.
Copyright of FeaturePRO.

Kensington
020 7368 4450

Energy Rating: We aim to make our particulars both accurate and reliable. However, they are not guaranteed; nor do they form part of an offer or contract. If you require clarification on any points then please contact us, especially if you're traveling some distance to view. Please note that appliances and heating systems have not been tested and therefore no warranties can be given as to their good working order

**MARSH &
PARSONS**