



Acacia Road, SW16

£345,000

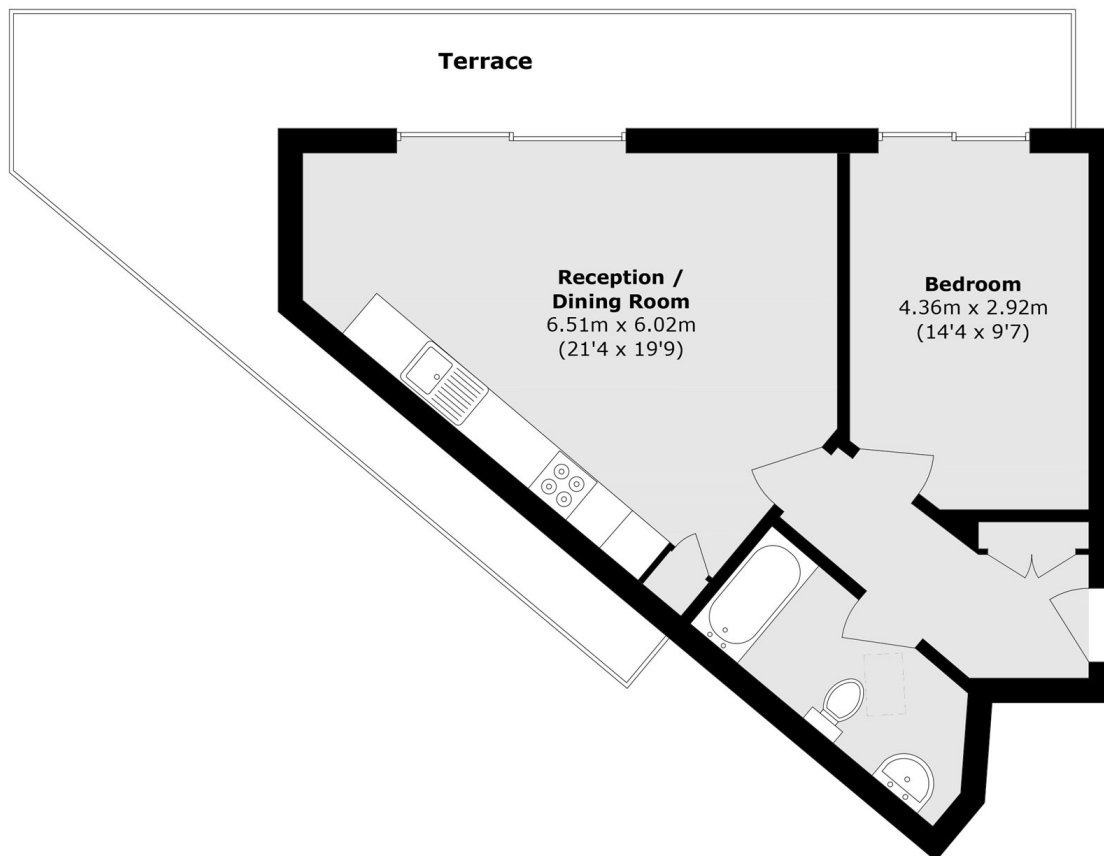
A one double bedroom penthouse apartment with a large wrap-around roof terrace. This 567 square foot apartment has a high specification throughout including a German kitchen, German appliances throughout and underfloor heating in the bathroom. There is a share of the freehold a 999-year lease and a lift to all floors.

Lilium House is a boutique development tucked nicely away from the hustle and bustle of the main road but within convenient walking distance to shops, bars, restaurants and cafes as well as with extremely easy access to Norbury Station. The green open spaces of Norbury Park are just across the road, with Streatham Common also just a short walk away.

Features

- Penthouse Apartment
- One Double Bedroom
- Wrap-Around Roof Terrace
- Lift To All Floors
- Share Of The Freehold
- 999 Year Lease
- Chain Free
- New Homes 10 Year Warranty

Acacia Road, Streatham, SW16



Total area (approx.): 51.4 sq. m (553.2 sq. ft)
Terrace area (approx.): 28.5 sq. m (306.7 sq. ft)