



15 Hawkmoor Parke, Bovey Tracey, Newton Abbot, Devon, TQ13 9NL



£1,300,000



Set within the breathtaking landscape of Dartmoor National Park, 15 Hawkmoor Parke presents an outstanding opportunity to acquire a beautifully refurbished five-bedroom detached home in one of the area's most exclusive private developments. Approached through its own secure gates and nestled within approximately three-quarters of an acre of mature grounds, this remarkable property offers privacy & tranquillity.

The home has been thoughtfully upgraded throughout by the current owners, combining high-quality finishes with generous proportions to create an elegant yet welcoming family environment. The accommodation includes four versatile reception rooms, ideal for both everyday living and entertaining on a grand scale. Large windows and French doors fill the interior with natural light while providing seamless connection to the gardens beyond.



The principal accommodation comprises four reception rooms and five bedrooms. The spacious dual-aspect lounge features a stylish fireplace with an inset wood burner, and French doors open into the conservatory, where you can enjoy beautiful views over the garden and Dartmoor National Park. Additional reception space includes a dining room, a family room, and a well-appointed kitchen/breakfast room, complemented by a utility room and a convenient ground-floor shower room.

To view this property call Lang Town & Country Estate Agents on **01752 456000**





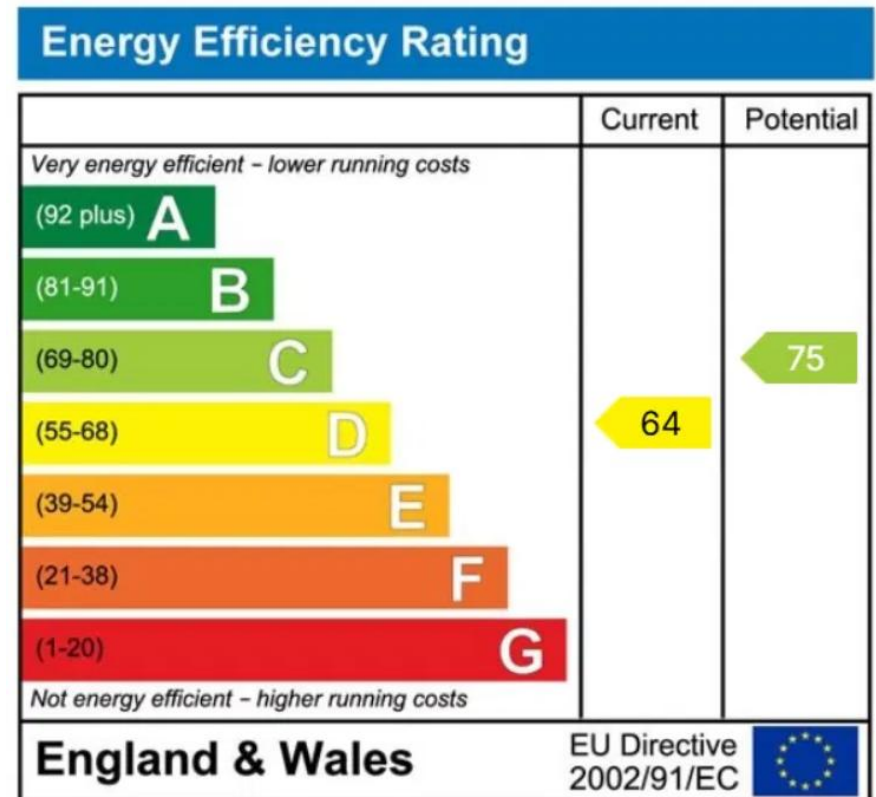
## Continued

On the first floor, there are five generously sized bedrooms, two of which benefit from en-suite facilities, along with a contemporary family bathroom.

To the rear, the property enjoys a private south-westerly facing garden, offering sunshine long into the evening—perfect for outdoor dining, relaxation, and appreciating the surrounding natural beauty. The landscaped grounds feature an expansive lawn, feature ponds, established planting, and multiple seating areas.

Practicality accompanies the luxury, with a double garage and ample visitor parking ensuring convenience for family and guests alike.

Rarely does a home of this calibre, setting, and privacy come to market. 15 Hawkmoor Parke represents an exceptional lifestyle opportunity in one of Devon's most admired locations.



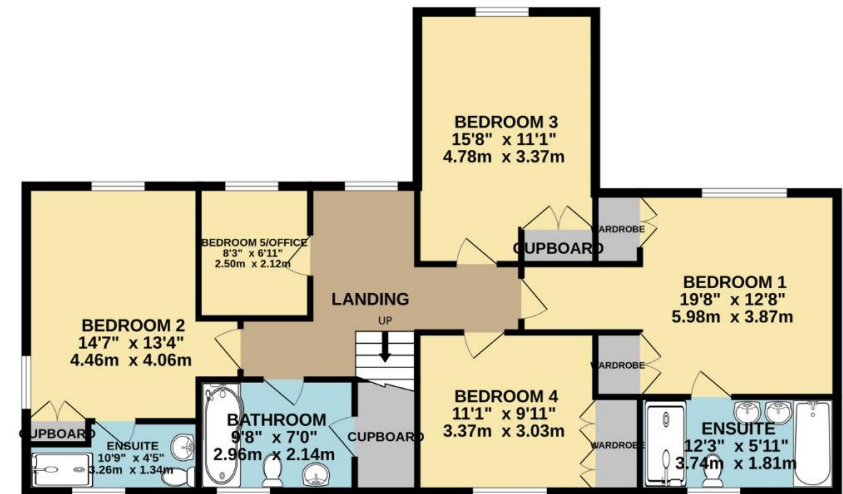




GROUND FLOOR  
1801 sq.ft. (167.3 sq.m.) approx.



FIRST FLOOR  
1073 sq.ft. (99.7 sq.m.) approx.



TOTAL FLOOR AREA : 2874 sq.ft. (267.0 sq.m.) approx.  
Measurements are approximate. Not to scale. Illustrative purposes only  
Made with Metropix ©2025









# £1,300,000

15 Hawkmoor Parke, Bovey Tracey, Newton Abbot, Devon, TQ13 9NL

  
**LANG TOWN  
& COUNTRY**  
SALES



Lang Town & Country  
6 The Broadway,  
Plymstock, Devon, PL9 7AU  
Tel: 01752 456000  
Email: [plymstock@langtownandcountry.com](mailto:plymstock@langtownandcountry.com)  
[www.langtownandcountry.com](http://www.langtownandcountry.com)

Lang Town & Country endeavour to ensure the accuracy of property details produced and displayed, we have not tested any apparatus, equipment, fixtures, fittings or services and so cannot verify that they are connected, in working order or fit for purpose. A buyer must check the availability of any property and make an appointment to view before embarking on any journey to see a property.

