



Starboard Way, E16

£500,000

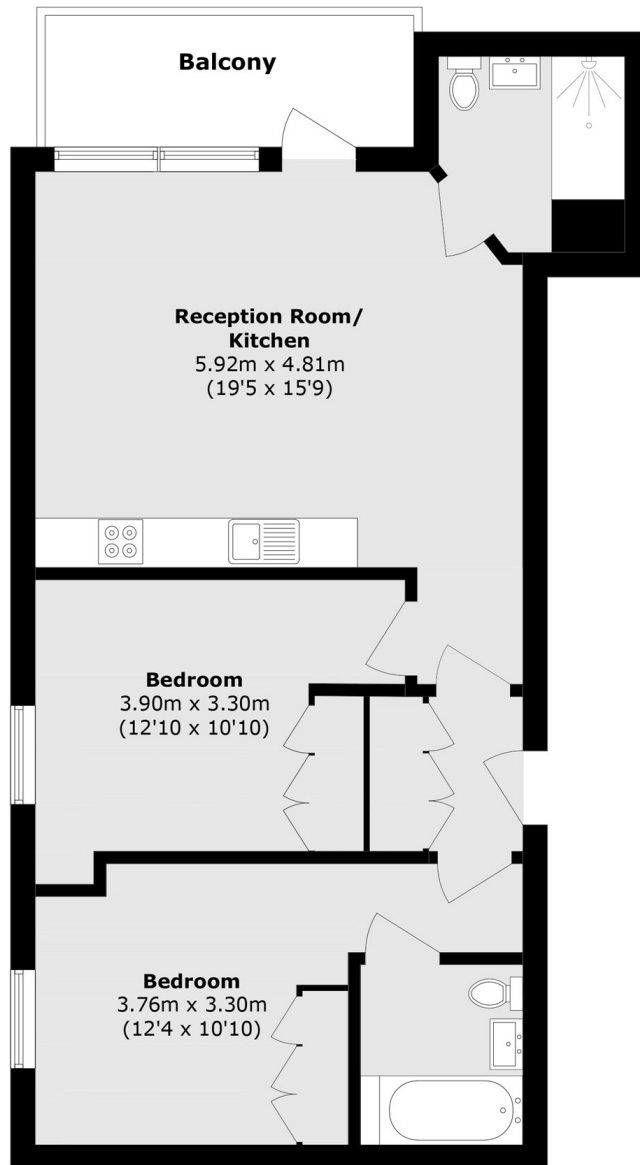
Set within the Royal Wharf development, this spacious two bedroom apartment features a modern south facing open plan reception room with views overlooking the river. Residents also benefit from exclusive on-site facilities and a 24-hour concierge service.

Corsair House is ideally located between Pontoon Dock and Custom House DLR stations, providing convenient access to Canary Wharf and London City Airport.

Features

- 800 Square Feet
- Concierge services
- River views
- Secure Development
- Resident facilities
- Secure parking

Starboard Way, London, E16



Total area (approx.): 74.4 sq. m (800.8 sq. ft)

Balcony area (approx.): 7.1 sq. m (76.4 sq. ft)