

22 Bower Vale

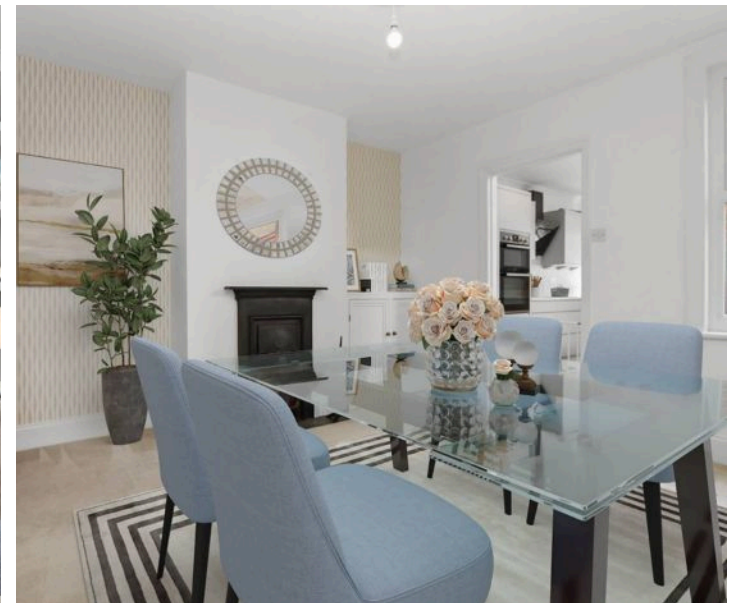
Epping, Essex

Guide Price £525,000

Council Tax band: D

Tenure: Freehold

- CHAIN FREE
- WALKING DISTANCE TO STATION/HIGH STREET
- CHARACTER PROPERTY
- EN SUITE TO PRIMARY BEDROOM
- MODERN FITTED KITCHEN
- SIDE ACCESS



Front Door

Living Room

13' 2" x 11' 10" (4.02m x 3.61m)

Dining Room

11' 4" x 11' 10" (3.46m x 3.61m)

Kitchen

12' 5" x 6' 11" (3.78m x 2.10m)

Stairs Leading To

Bedroom One

13' 5" x 11' 10" (4.08m x 3.61m)

En-Suite WC

Bedroom Two

11' 5" x 8' 6" (3.48m x 2.58m)

Family Bathroom

7' 7" x 6' 10" (2.30m x 2.08m)

Stairs Leading To

Bedroom Three

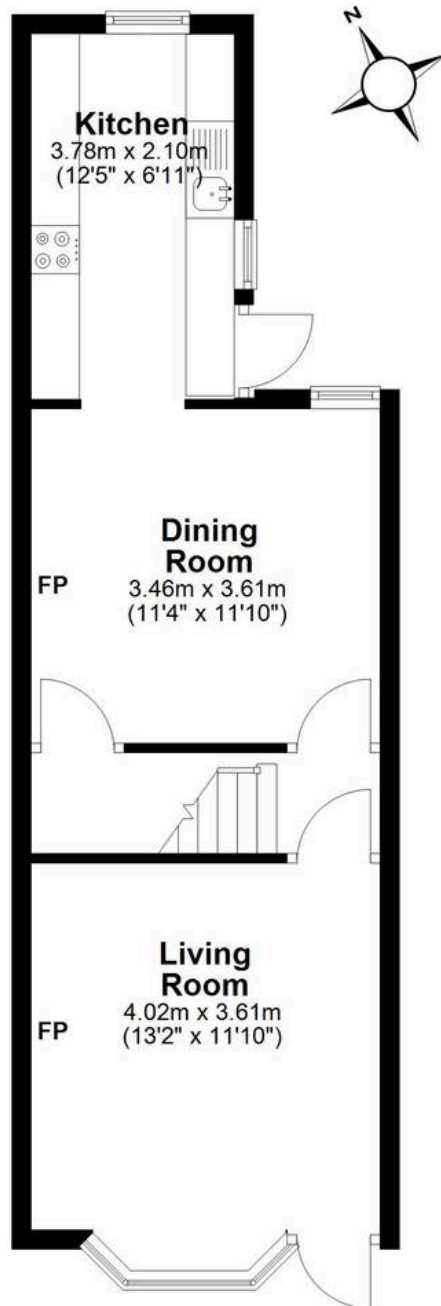
13' 9" x 11' 2" (4.20m x 3.40m)





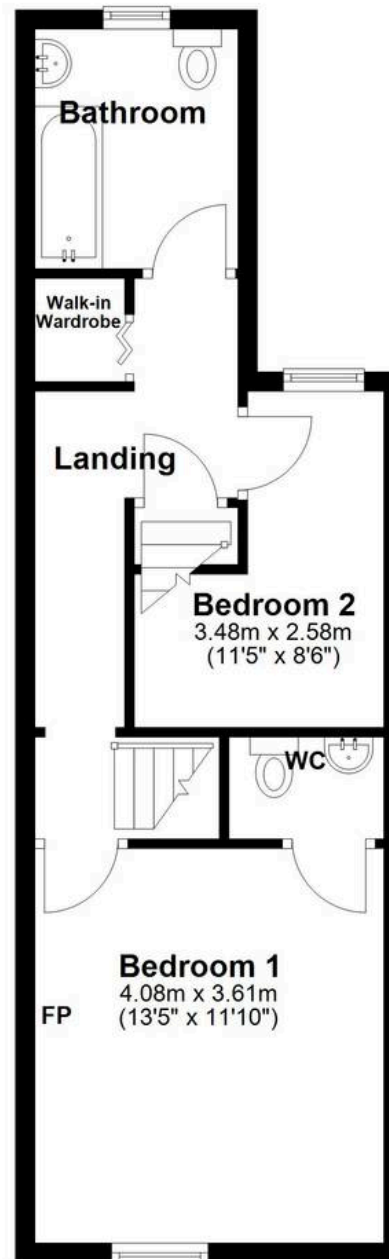
Ground Floor

Approx. 38.7 sq. metres (416.7 sq. feet)



First Floor

Approx. 40.9 sq. metres (440.3 sq. feet)



Second Floor

Approx. 14.3 sq. metres (153.7 sq. feet)



Total area: approx. 93.9 sq. metres (1010.7 sq. feet)