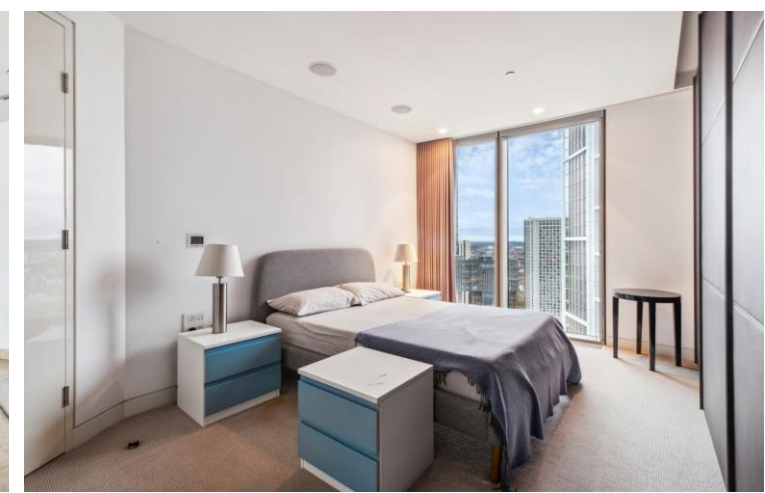




The Tower
1 St. George Wharf, SW8

CHESTERTONS





A spectacular two-bedroom, two-bathroom apartment on the 29th floor of this prestigious building, The Tower, at St George Wharf. Parking available with separate negotiation.

Accommodation comprises two double bedrooms, two bathrooms (one is en-suite), an open-plan reception room and kitchen with views across the River Thames towards The London Eye, The Palace of Westminster, The Shard, and into the City. The kitchen has fully integrated state of the art Miele appliances including a temperature controlled wine cooler and coffee machine. The apartments media and atmosphere is touch screen controlled and also benefits from floor to ceiling windows, comfort cooling and under floor heating.

Residents of The Tower have access to the on-site facilities which include a cinema room, swimming pool, sauna and spa treatment rooms, gym, business lounge, valet parking and 24 hour concierge.

- 29th Floor
- River Views
- Parking Available Separately
- 24 Hour Concierge
- Pool & Spa
- Residents Gym

£6,250 pcm

Additional tenant charges apply (fees apply to non-AST tenancies only)

Tenancy Agreement Fee: £300

References per Tenant/Guarantor: £60

Inventory check (approx. £100 – £250 inc. VAT)

chestertons.co.uk/property-to-rent/applicable-fees

Energy Efficiency Rating		Current	Potential
100-109	A		
81-100	B	85	85
62-81	C		
43-61	D		
25-42	E		
10-24	F		
1-9	G		

Not energy efficient - higher running costs

EU Directive 2002/91/EC

England, Scotland & Wales

Minimum Term: 12 months
Deposit Required: £8,653.85
Local Authority: London Borough Of Lambeth
Council Tax Band: H
EPC Rating: B
Furnished

Chestertons Battersea Park & Nine Elms Lettings

62-64 Battersea Bridge Road
 London
 SW11 3AG
batterseapark@chestertons.co.uk
 02030408269
chestertons.co.uk

The Tower, SW8

Approximate gross internal area

110.81 sq m / 1193 sq ft

(Including Winter Garden)

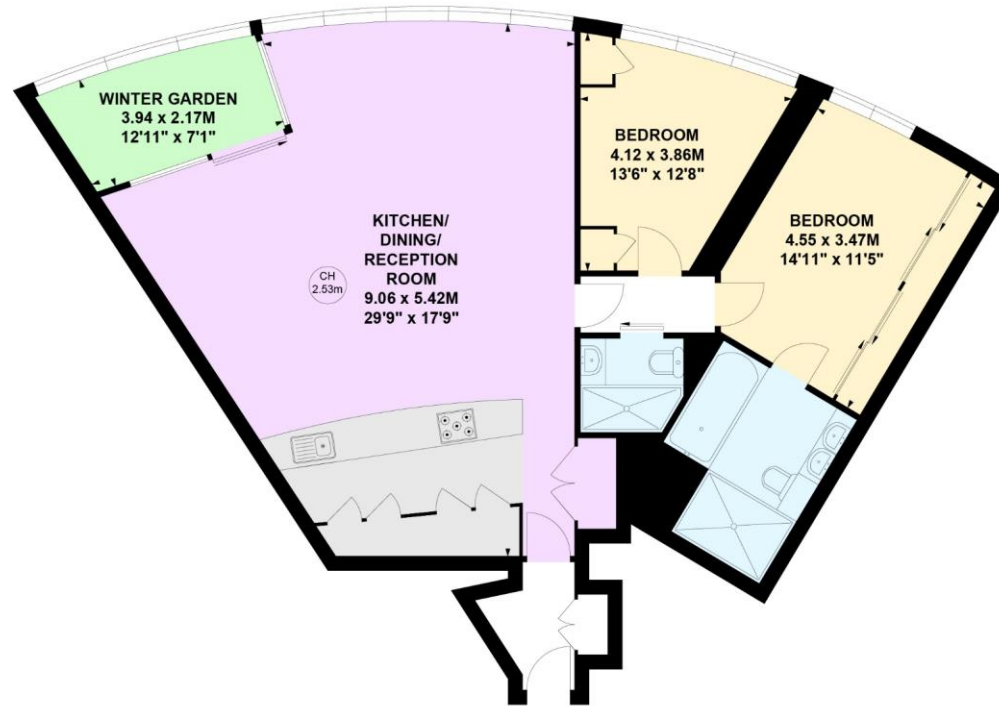
Winter Garden

6.86 sq m / 73 sq ft



Key :

CH - Ceiling Height



Twenty-Ninth Floor

Not to scale, for guidance only and must not be relied upon as a statement of fact.

All measurements and areas are approximate only

Chesterton UK Services Limited trading as Chestertons for themselves and for the vendor of this property whose agents they are, give notice that (i) these particulars do not constitute any part of an offer or contract, (ii) all statements contained within these particulars are made without responsibility on the part of Chestertons or the vendor, (iii) whilst made in good faith, none of the statements contained within these particulars are to be relied upon as a statement or representation of fact, (iv) any intending purchasers must satisfy themselves by inspection or otherwise as to the correctness of each of the statements contained within these particulars, (v) the vendor does not make or give either Chestertons or any person in their employment any authority to make or give representation or warranty whatsoever in relation to this property. Wide angle lenses may be used. ©Copyright Chestertons | Chesterton Global Ltd | Registered Office 40 Connaught Street, Hyde Park, London W2 2AB Registered Company Number 05334580.



This paper is
100% recyclable