



Lawnsmead Gardens, Newport Pagnell, MK16 8AY

welcome to

Lawnsmead Gardens, Newport Pagnell

Situated in the highly sought-after LAWNSMEAD GARDENS development in Newport Pagnell, this well-presented ONE-bedroom apartment is exclusively available for the over 55's, offering comfortable and secure living in a peaceful community setting.

Entrance Hall

Door to the front, storage cupboard and carpet.

Lounge/Diner

Electric heater, carpet and double-glazed windows to the rear and side. Glazed double doors to the kitchen.

Kitchen

Fitted with a mix of wall and base units with work top over, stainless steel sink with drainer, electric oven and electric hob with extractor fan over. Space for a fridge/freezer. Laminate flooring and double-glazed window to the side.

Bedroom

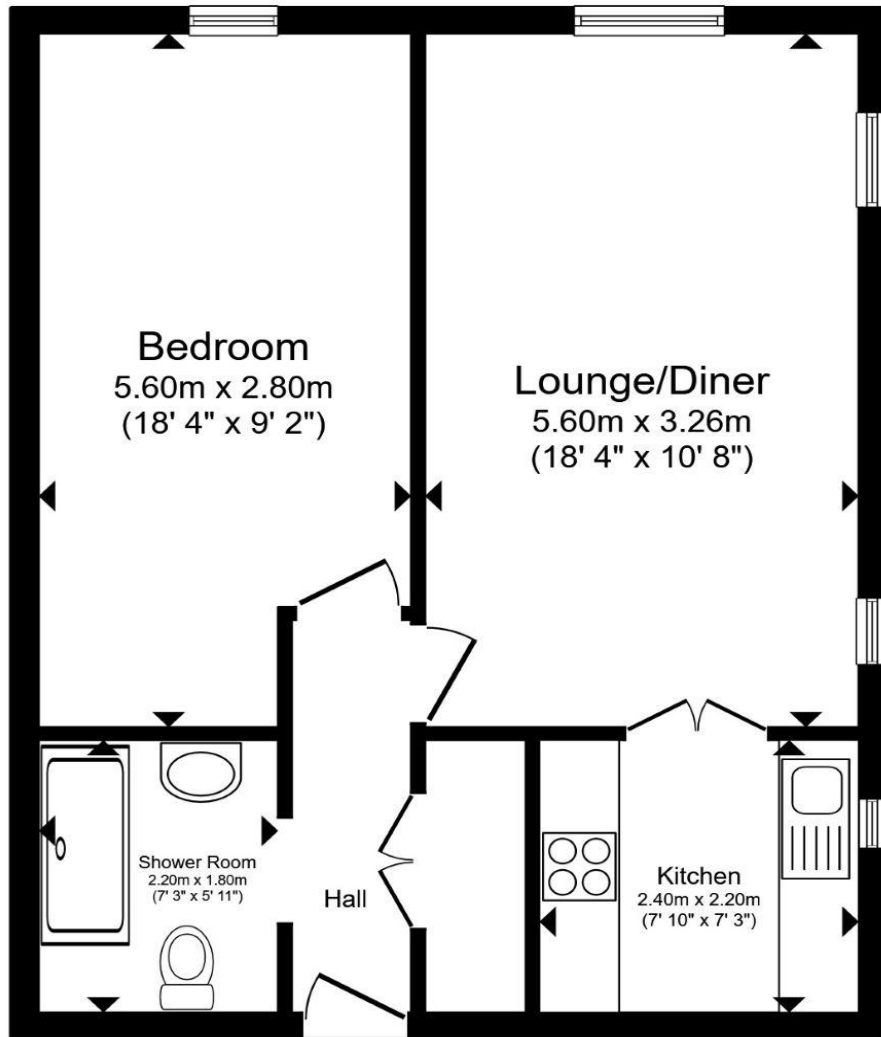
Built-in wardrobe with hanging space and storage, electric heater, carpet and double-glazed window to the front.

Shower Room

Fully tiled with a pedestal wash hand basin, low-level WC and a shower cubicle. Vinyl flooring and extractor fan.

Outside Parking

Residential and visitor parking.



Total floor area 48.7 m² (524 sq.ft.) approx

This floor plan is for illustrative purposes only. It is not drawn to scale. Any measurements, floor areas (including any total floor area), openings and orientation are approximate. No details are guaranteed, they cannot be relied upon for any purpose and they do not form part of any agreement. No liability is taken for any error, omission or misstatement. A party must rely upon its own inspection(s). Powered by www.propertybox.io



welcome to
Lawnsmead Gardens,
Newport Pagnell

- ONE-BEDROOM APARTMENT
- OVER 55'S
- CHAIN FREE
- LIFT ACCESS
- SECURE ENTRY SYSTEM

Tenure: Leasehold EPC Rating: C
Council Tax Band: B Service Charge: 3800.00
Ground Rent: 500.00

This is a Leasehold property. We are awaiting further details about the Term of the lease. For further information please contact the branch. Please note additional fees could be incurred for items such as Leasehold packs.

£150,000



view this property online [brownandmerry.co.uk/Property/NPL107993](https://www.brownandmerry.co.uk/Property/NPL107993)



Property Ref:
NPL107993 - 0002

1. MONEY LAUNDERING REGULATIONS Intending purchasers will be asked to produce identification documentation at a later stage and we would ask for your co-operation in order that there is no delay in agreeing the sale. 2. These particulars do not constitute part or all of an offer or contract. 3. The measurements indicated are supplied for guidance only and as such must be considered incorrect. Potential buyers are advised to recheck measurements before committing to any expense. 4. We have not tested any apparatus, equipment, fixtures or services and it is in the buyers interest to check the working condition of any appliances. 5. Where an EPC, or a Home Report (Scotland only) is held for this property, it is available for inspection at the branch by appointment. If you require a printed version of a Home Report, you will need to pay a reasonable production charge reflecting printing and other costs. 6. We are not able to offer an opinion either written or verbal on the content of these reports and this must be obtained from your legal representative. 7. Whilst we take care in preparing these reports, a buyer should ensure that his/her legal representative confirms as soon as possible all matters relating to title including the extent and boundaries of the property and other important matters before exchange of contracts.

Brown & Merry is a trading name of Sequence (UK) Limited which is registered in England and Wales under company number 4268443, Registered Office is Cumbria House, 16-20 Hockliffe Street, Leighton Buzzard, Bedfordshire, LU7 1GN. VAT Registration Number is 500 2481 05.


brown & merry



01908 611242



newportpagnell@brownandmerry.co.uk



74A High Street, Newport Pagnell, MILTON
KEYNES, Buckinghamshire, MK16 8AQ



[brownandmerry.co.uk](https://www.brownandmerry.co.uk)