



## Worcester Mews, NW6

£473 Per week

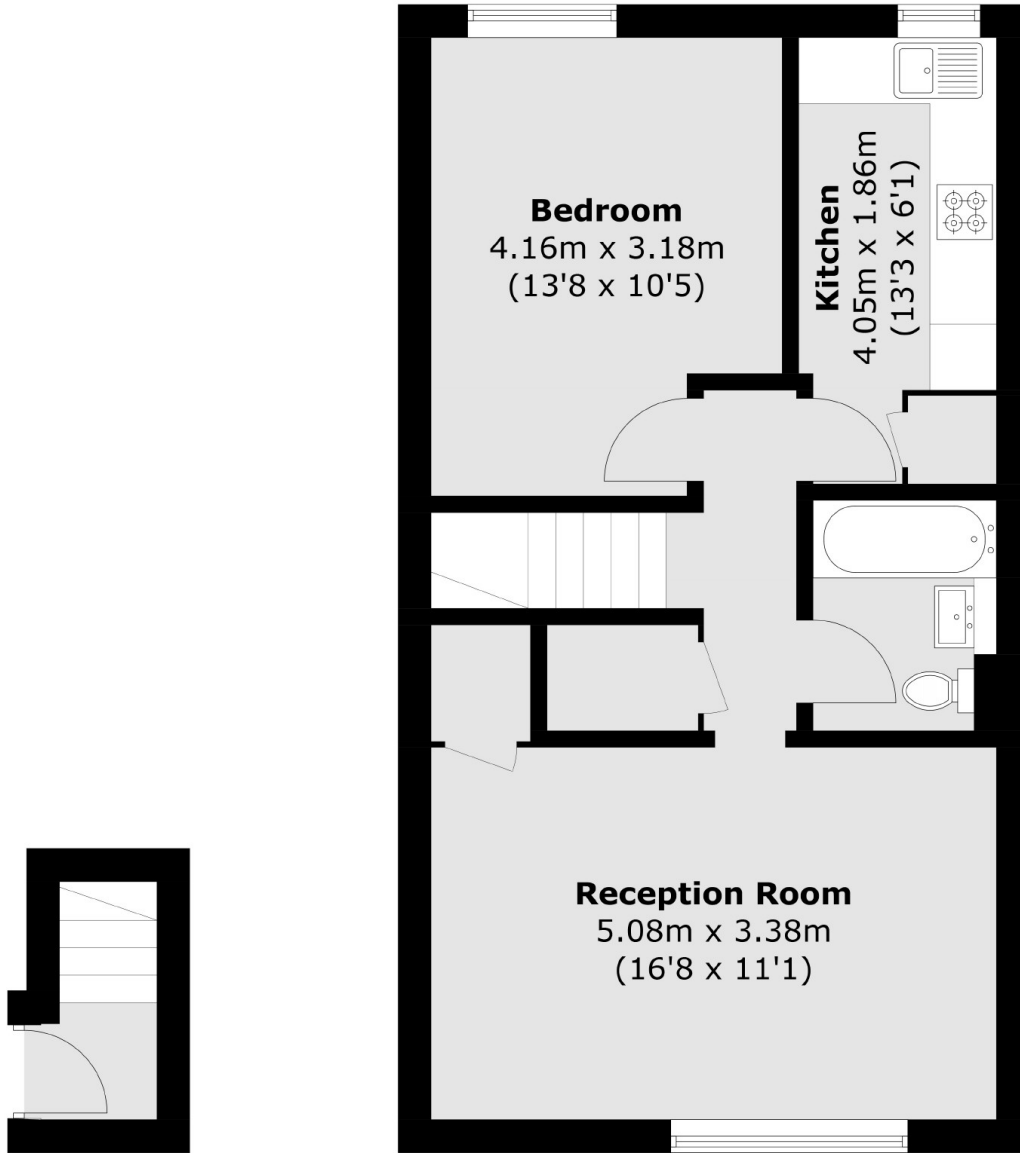
This bright and well planned one bedroom flat comprises a large reception room, separate eat in kitchen, tiled bathroom and separate storage room. Further benefits include double glazed windows and excellent storage space. The rental price includes heating and the heating of hot water.

Situated in the middle of West Hampstead and Finchley Road stations as well as shops, cafes, bars and restaurants.

### Features

- One Double Bedroom
- Heating & Hot Water Included
- Tiled bathroom
- Great Storage
- Double Glazed
- West Hampstead

Worcester Mews,  
London, NW6



**First Floor**

**Second Floor**

Total area (approx.): 52.5 sq. m (565.1 sq. ft)