



Charles Clowes Walk, London

Asking Price £850,000

A wonderful two bedroom apartment situated in the popular The Residence development, located within the Nine Elms regeneration area with beneficial links to transport including Battersea, Vauxhall and Nine Elms Station.

Featuring an open plan kitchen and living space, the apartment includes AEG fully integrated appliances, such as a washer/dryer, oven and microwave, as well as underfloor heating throughout. The apartment also benefits from two spacious winter gardens.

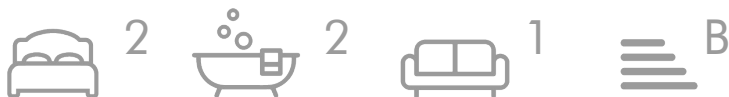
Residents will also benefit from the fantastic on site amenities including the gym, yoga room, private cinema and meeting rooms, as well as a communal outdoor area.

Approximately 990 years remaining on lease
Ground rent amount: Ask agent
Ground rent review period: Ask agent
Service charge amount: approx. Ask agent
Service charge review period: N/A
Council tax band: F Wandsworth

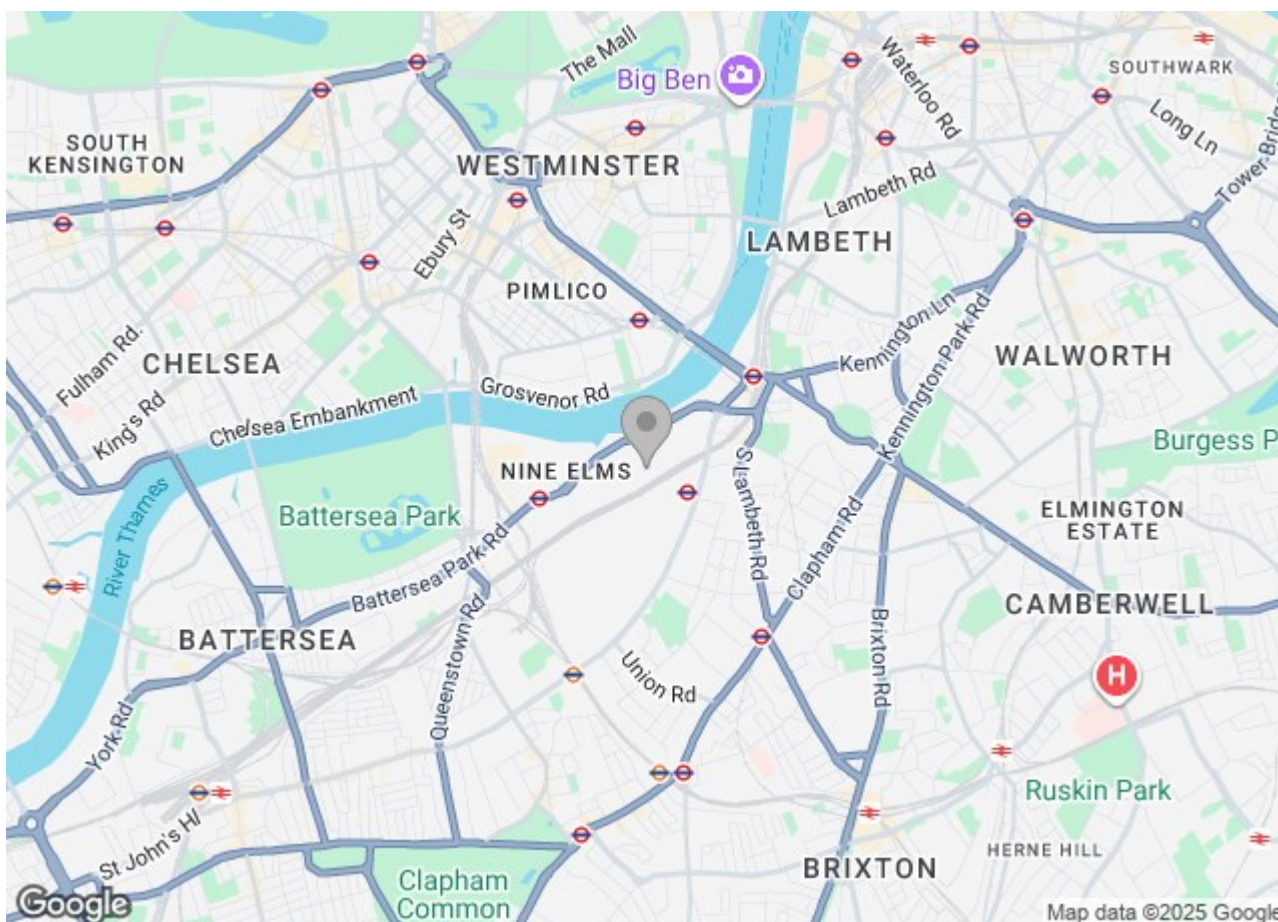
Electricity supply – Mains | Heating - District | Water supply – Mains | Sewerage – Mains | Internet: FTTP
| Lift Access | Parking included

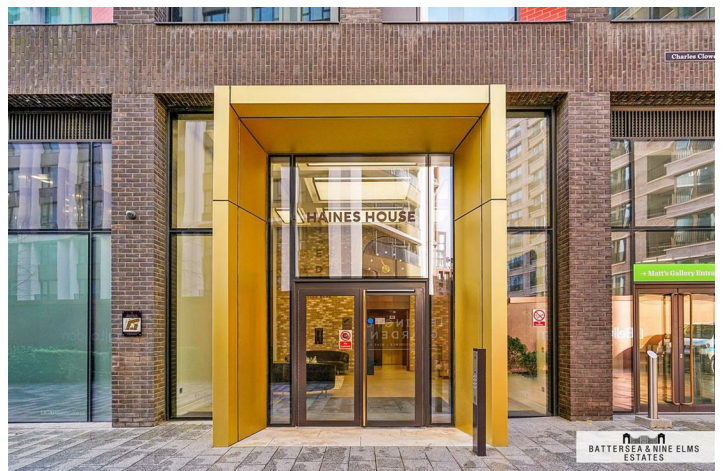
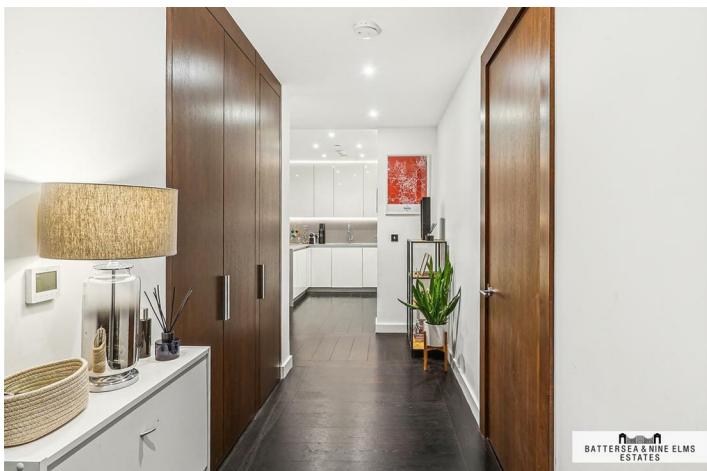
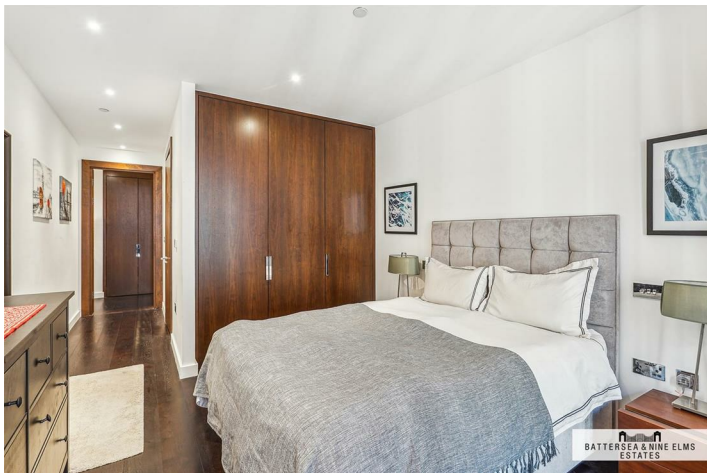
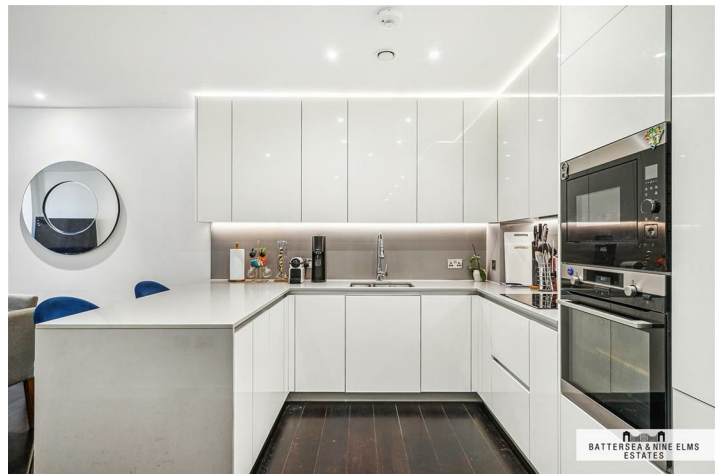
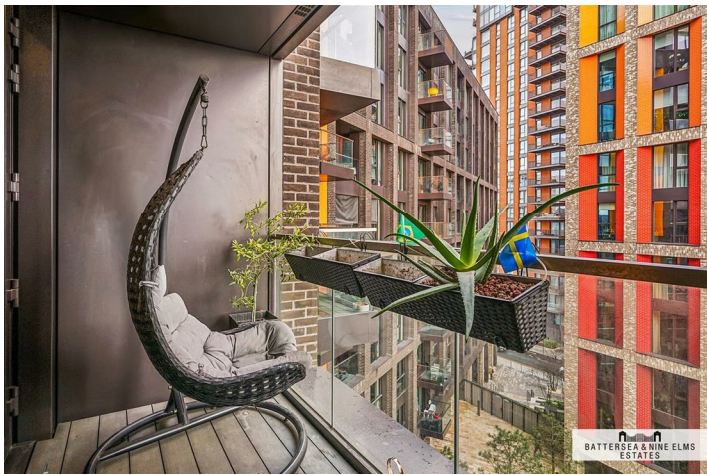
To check broadband and mobile phone coverage please visit Ofcom
To check planning permission please visit Wandsworth Council Website, Planning & Building Control

10 Charles Clowes Walk London

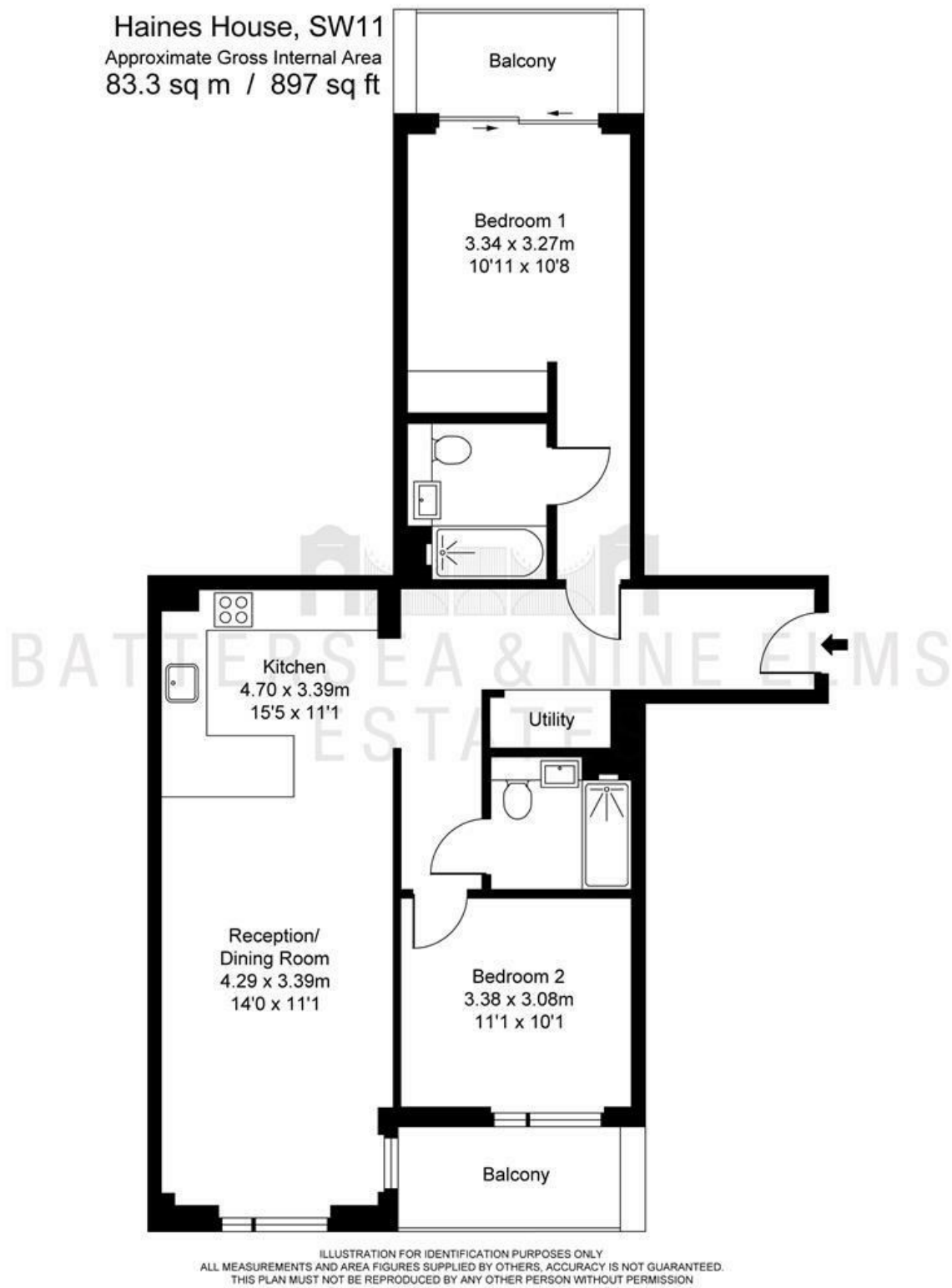


- 24 hour concierge
- Two Bedrooms
- Zone 1 transport links
- Residents Gym
- Two Bathrooms
- Underground parking
- Underfloor heating
- Two Winter Gardens
- Underground bike storage





Floor Plan



These particulars, whilst believed to be accurate are set out as a general outline only for guidance and do not constitute any part of an offer or contract. Intending purchasers should not rely on them as statements of representation of fact, but must satisfy themselves by inspection or otherwise as to their accuracy. No person in this firm's employment has the authority to make or give any representation or warranty in respect of the property.

