



Key Features

- ◆ Two bedroom, two-bathroom, first-floor apartment
- ◆ Highly sought-after Meads seafront location
- ◆ Sea-facing balcony
- ◆ Underground allocated parking
- ◆ Underfloor heating
- ◆ EPC rating B



Darley Road, Meads, Eastbourne

£2,150 PCM



Northwood are delighted to welcome to market this two-bedroom, two-bathroom, first-floor apartment in the highly sought-after Meads area of Eastbourne.

Accommodation comprises: lounge/diner, modern fitted kitchen with appliances, shower room, two double bedrooms (one with built-in wardrobes), ensuite with bath and shower and balcony with sea views.

Further benefits include underground, allocated parking, lift access, underfloor heating, plenty of storage, communal gardens, double-glazing and secure entry-phone system.





Located just off Meads Village high street with all its boutique shops and cafes, behind a secure gate in manicured communal grounds and surrounded by local parks, this elegant apartment has been finished to a high standard. Looking directly over the Holywell end of Eastbourne's fabulous Victorian seafront, with the beach 3 mins walk from the flat, this beautiful apartment is perfectly located to make the most of life on the Sunshine Coast.

Please view our immersive virtual tour to fully appreciate this fantastic property:

<https://tour.giraffe360.com/afe213b566e3491dbbe50de26a7f26c6>

Mobile Phone Coverage and Broadband speeds can be checked on the Ofcom website:

<https://checker.ofcom.org.uk/>

Council Tax Band G: £4423

Holding Deposit: £496.15 (equivalent to one week's rent)

Full Deposit: £2480.76 (holding deposit + equivalent of four weeks' rent)

1st month's rent + Full Deposit: £2690.76

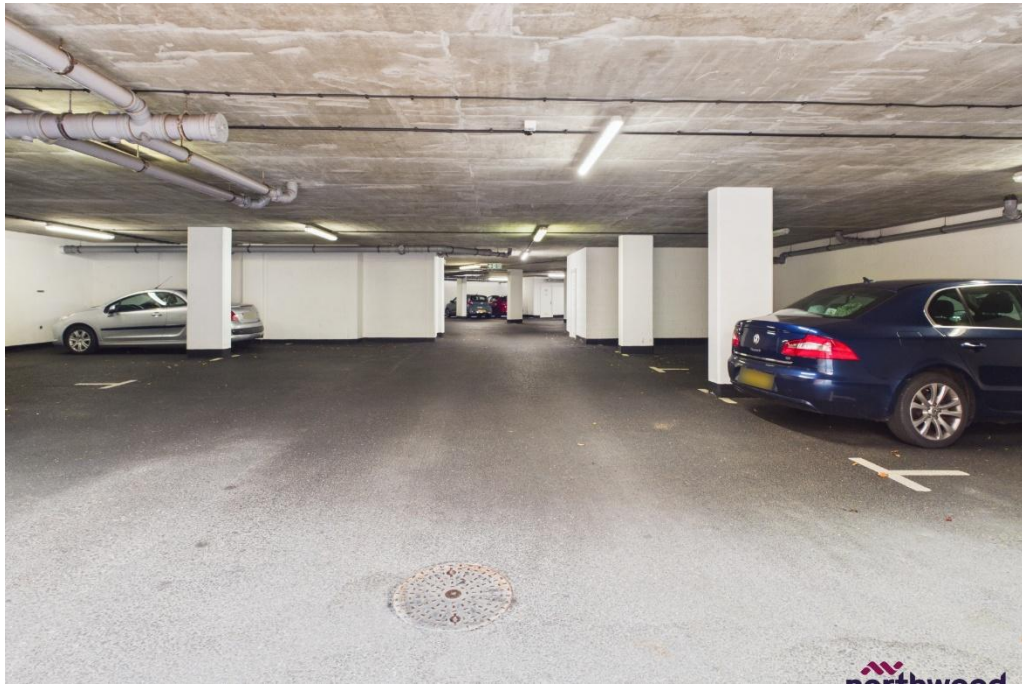
Total household income must exceed £64,500.00 to be considered for this property.

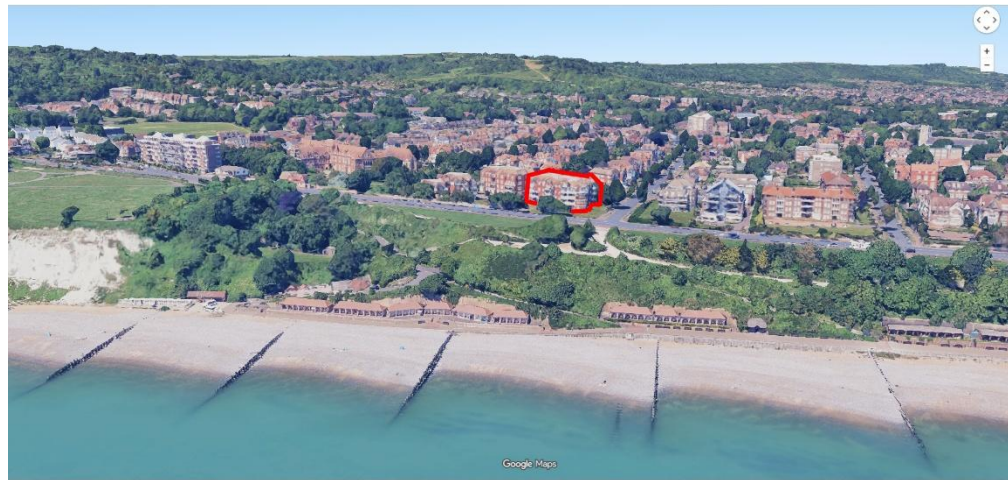
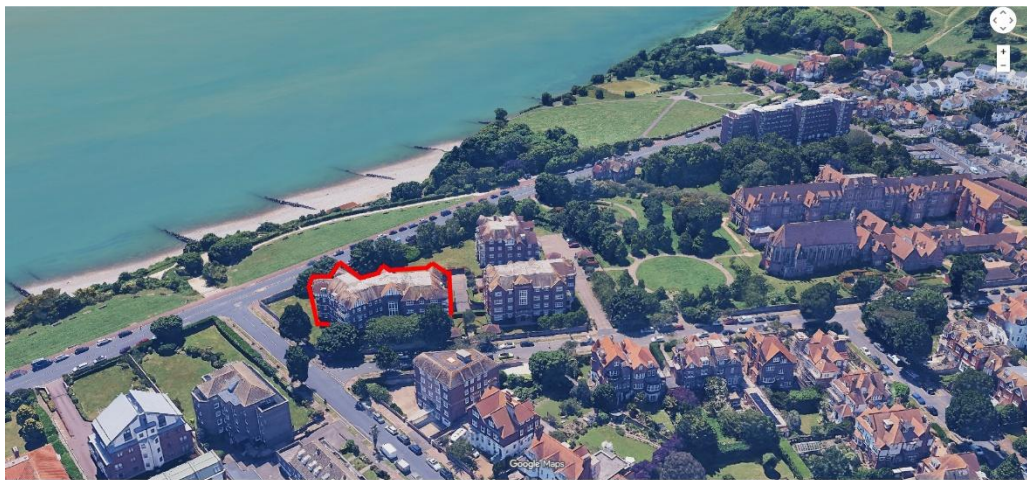
This property is managed directly by the landlord.

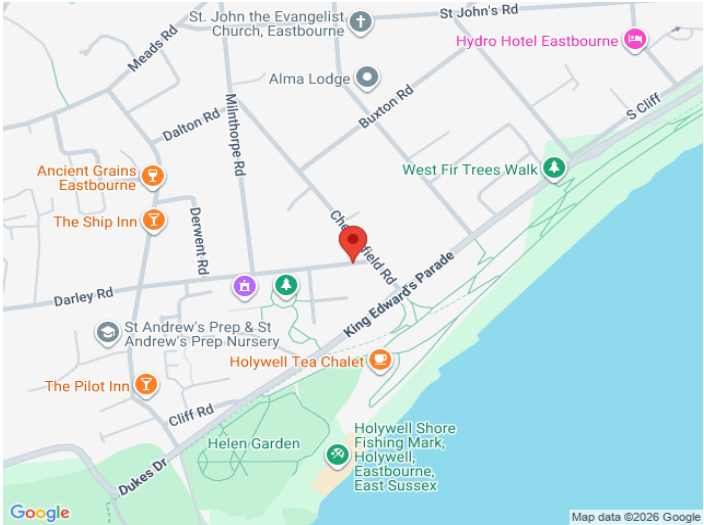
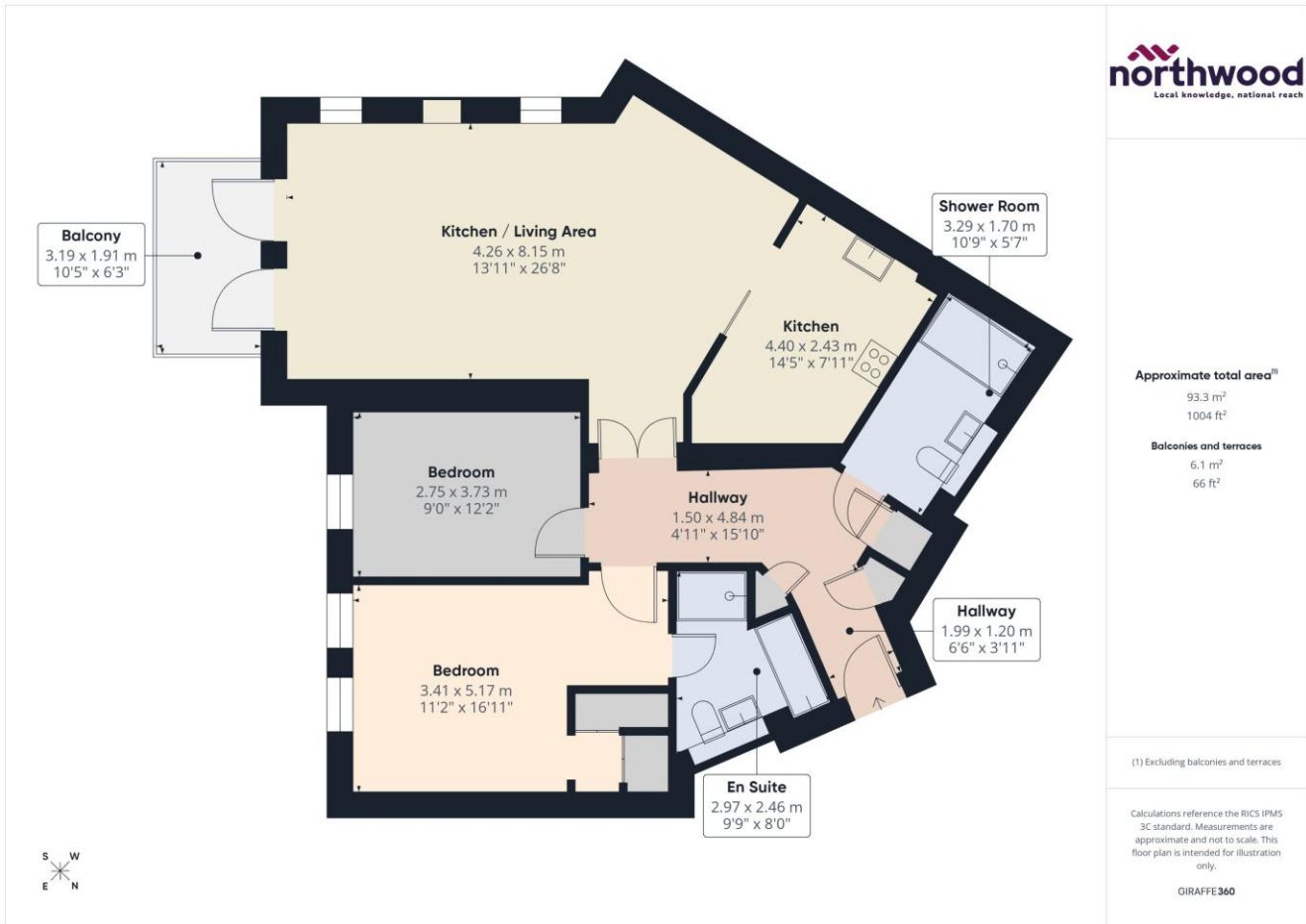












Northwood
81-83 South Street
Eastbourne
BN21 4LR
01323 744544
eastbourne@northwooduk.com